

# BRANNER SURVEYING

MEMBER-PROFESSIONAL LAND SURVEYORS OF OHIO

12500 N. PEACH RIDGE ROAD  
ATHENS, OHIO 45701

JOHN M. BRANNER  
Registered Land Surveyor

TELEPHONE  
(614) 592-5778

## DESCRIPTION OF A 5.957 ACRE TRACT

Commencing at the South-west corner of Section 32, thence, east 18.4 chains (deed) to an iron pin; thence South 0 degrees 09 minutes 53 seconds West, a distance of 700.21 feet to a point in Township Road 218; thence, along said road, North 57 degrees 20 minutes 50 seconds West, a distance of 167.27 feet to a rail road spike, said spike being the POINT OF BEGINNING;

thence, leaving said road South 87 degrees 45 minutes 14 seconds West, a distance of 318.30 feet to an iron pin; thence North 85 degrees 38 minutes 47 seconds West, a distance of 212.15 feet to an iron pin; thence North 70 degrees 46 minutes 31 seconds West, a distance of 297.62 feet to an iron pin; thence, North 6 degrees 40 minutes 20 seconds West, a distance of 543.84 feet to a rail road spike in Township Road 218; thence, along said road, South 64 degrees 10 minutes 48 seconds East, a distance of 82.63 feet to a railroad spike; thence South 54 degrees 51 minutes 50 seconds East, a distance of 211.47 feet to a railroad spike; thence South 53 degrees 30 minutes 20 seconds East, a distance of 309.01 feet to a railroad spike; thence South 51 degrees 32 minutes 20 seconds East, a distance of 482.82 feet to the POINT OF BEGINNING; said described tract containing 5.957 acres.

Subject to all easements and rights of way of record.

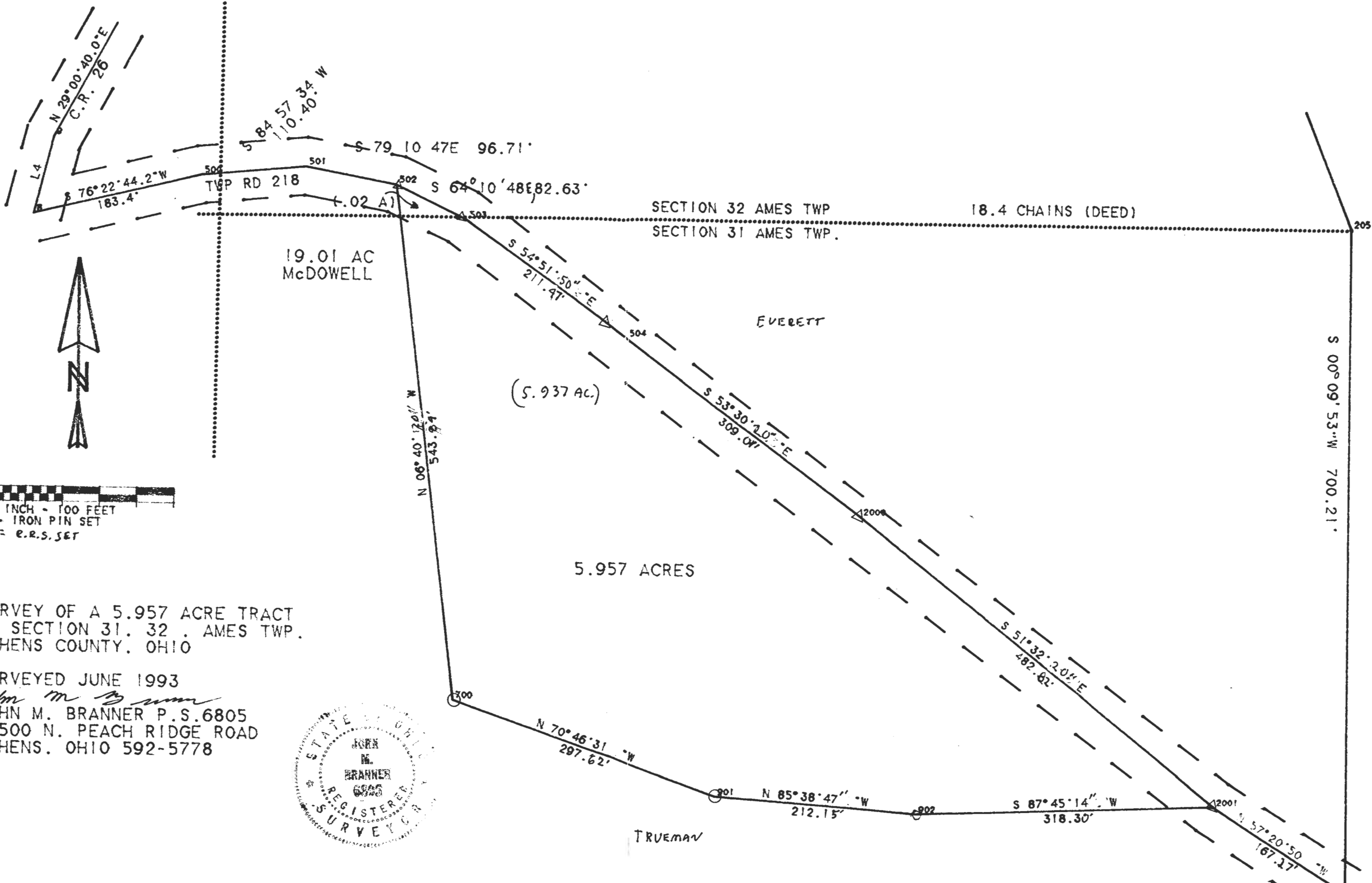
John M. Branner P.S. 6805



Description checked for  
Mathematical Accuracy  
ATHENS COUNTY  
ENGINEER'S OFFICE  
BY: J. Blausen  
DATE: 6-14-93

70

Ames # 31 & # 32



1 INCH = 100 FEET  
 O = IRON PIN SET  
 Δ = E.R.S. SET

SURVEY OF A 5.957 ACRE TRACT  
 IN SECTION 31, 32, AMES TWP.  
 ATHENS COUNTY, OHIO

SURVEYED JUNE 1993  
*John M. Branner*  
 JOHN M. BRANNER P.S. 6805  
 12500 N. PEACH RIDGE ROAD  
 ATHENS, OHIO 592-5778

72

73

TRUMAN

EVERETT

19.01 AC  
 McDOWELL

(5.937 AC)

5.957 ACRES

SECTION 32 AMES TWP  
 SECTION 31 AMES TWP.

18.4 CHAINS (DEED)

