

DESCRIPTION OF A 3.00 ACRE TRACT

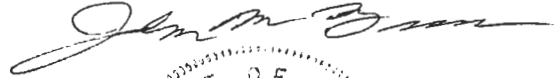
Situated in Section 32, T.6, R.13, Ames Township, Athens County, Ohio and being more particularly described as follows:

Commencing at the North-east corner of Section 32, thence, South 31.32 chains (deed) to a point; thence, West, 29.51 chains (deed) to a point; thence, North 20.83 chains (deed) to a point in State Route 550; thence, North 05 Degrees 35 Minutes 26 Seconds East, 622.94 feet (calculated) to a 24 inch white oak and the South-east corner of Grantor's 10.90 acre tract; thence, North 79 Degrees 41 Minutes 40 Seconds West, 219.82 feet to an iron pin; thence, South 71 Degrees 33 Minutes 19 Seconds West, 128.96 feet to an iron pin and being the point of beginning for the tract of land herein described:

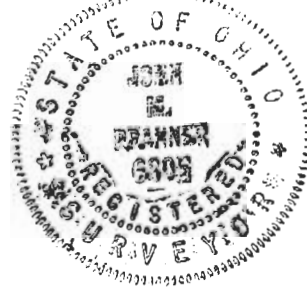
Thence, North 77 Degrees 32 Minutes 15 Seconds West, 213.53 feet to an existing iron pin;
thence, North 31 Degrees 32 Minutes 43 Seconds West, 513.77 feet to a point in State Route 550, passing an existing iron pin at 493.97 feet;
thence, along said road, North 52 Degrees 13 Minutes 47 Seconds East, 120.53 feet;
thence, North 60 Degrees 39 Minutes 28 Seconds East, 147.82 feet to a point;
thence, North 76 Degrees 55 Minutes 18 Seconds East, 2.36 feet to a point;
thence, leaving said road, South 21 Degrees 41 Minutes 27 Seconds East, 678.79 feet to the point of beginning and containing 3.00 acres

Subject to all easements and rights of way of record.

The above description was prepared from a field survey completed November 1995 under the supervision of John M. Branner P.S. 6805

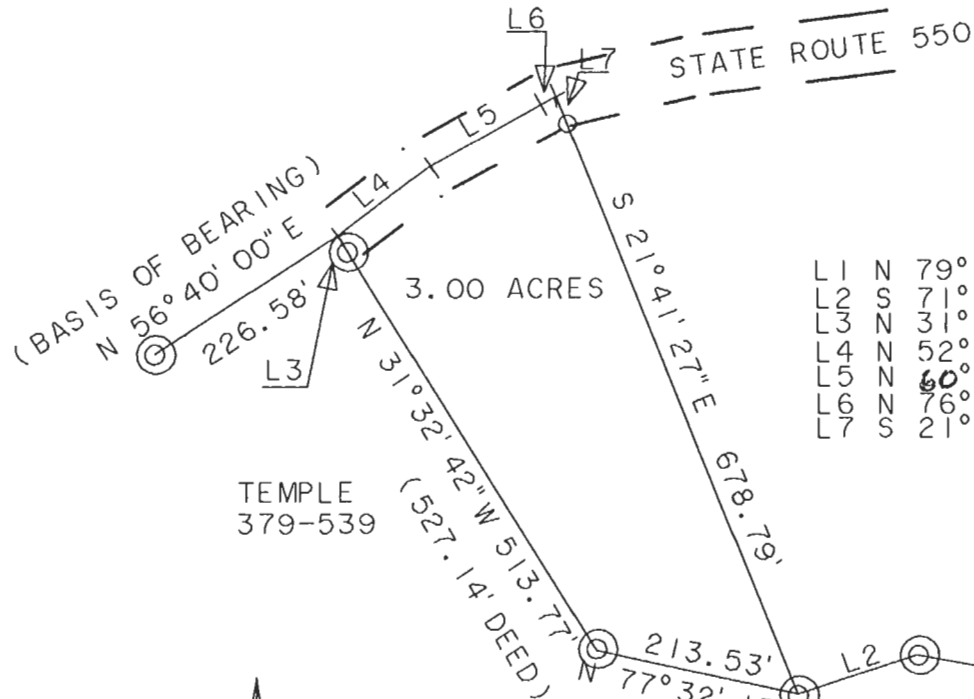


Description checked for
Mathematical Accuracy
ATHENS COUNTY
ENGINEER'S OFFICE
BY: S. Blausen
DATE: 12-4-95



91

KEIRNS
204-567



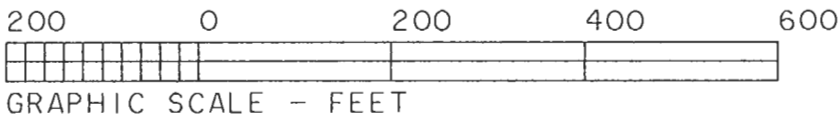
L1	N	79° 41' 40"	W	219.82'
L2	S	71° 33' 19"	W	128.96'
L3	N	31° 32' 42"	W	19.80'
L4	N	52° 13' 47"	E	120.53'
L5	N	60° 39' 28"	E	147.82'
L6	N	76° 55' 18"	E	2.36'
L7	S	21° 41' 27"	E	30.00'

BROOKS
283-58

TEMPLE
379-539

LUCAS 324-67

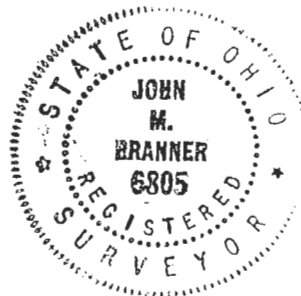
○ IRON PIN SET (5" X 8" X 30" REBAR)
 ⊙ IRON PIN FOUND
 TAX PLAT and DEED



SURVEY OF A 3.00 ACRE TRACT IN
SECTION 32, T. 6, R. 13 AMES TOWNSHIP
ATHENS COUNTY, OHIO
SURVEYED NOV. 1995

John M. Branner

JOHN M. BRANNER P.S. 6805
12500 N. PEACH RIDGE ROAD
ATHENS OHIO (614) 592-5778



92

AMS# 32