

DESCRIPTION OF A 41.061 ACRE TRACT

Situated in Section 32, T9, R.13, Ames Township, Athens County, Ohio and being part of a tract of land as described in Volume,324,Page,67 Athens County Deed Records and being more particularly described as follows:

Beginning at an iron pin found that bears West , 442 feet (deed) from the South-east corner of the North One-half of the South-East Quarter of Section 32.

Thence, along the lines of Diggle (176-811 O.R.):

North 86 degrees 40 minutes 32 seconds West, 1510.30 feet to an iron pin found;

North 3 degrees 22 minutes 14 seconds East, 344.15 feet to an iron pin found;

North 60 degrees 53 minutes 50 seconds West, 894.41 feet to a point;

North 86 degrees 16 minutes 4 seconds West, 343.98 feet to a point in North Peach Ridge Road;

Thence, along said road:

North 25 degrees 31 minutes 41 seconds East, 25.32 feet;

North 6 degrees 23 minutes 21 seconds East, 77.67 feet;

North 3 degrees 35 minutes 32 seconds West, 65.98 feet;

North 14 degrees 22 minutes 29 seconds West, 165.72 feet;

North 17 degrees 35 minutes 57 seconds West, 211.92 feet;

North 16 degrees 40 minutes 44 seconds West, 176.73 feet;

North 8 degrees 56 minutes 12 seconds West, 163.47 feet;

North 5 degrees 48 minutes 11 seconds West, 354.01 feet;

North 0 degrees 28 minutes 24 seconds East, 79.43 feet;

North 10 degrees 42 minutes 39 seconds East, 45.54 feet;

North 26 degrees 37 minutes 37 seconds East, 114.42 feet to a point at the intersection of North Peach Ridge Road and Dutch Creek Road;

Thence, along Dutch Creek Road:

South 20 degrees 18 minutes 40 seconds East, 503.02 feet;

South 20 degrees 36 minutes 58 seconds East, 43.89 feet;

South 37 degrees 38 minutes 19 seconds East, 135.98 feet;

South 56 degrees 05 minutes 41 seconds East, 113.81 feet;

South 59 degrees 58 minutes 34 seconds East, 107.01 feet;

South 61 degrees 21 minutes 19 seconds East, 157.68 feet;

South 65 degrees 48 minutes 27 seconds East, 87.18 feet;

South 70 degrees 55 minutes 39 seconds East, 201.41 feet;

South 80 degrees 27 minutes 53 seconds East, 329.08 feet;

Thence, leaving said road and along the lines of Chambers (324-67 O.R.):

South 15 degrees 07 minutes 24 seconds West, 283.57 feet along an existing fence-line to an iron pin set, passing an iron pin set at 24.0 feet;

South 25 degrees 59 minutes 12 seconds West, 451.19 feet along an existing fence-line to an iron pin set;

South 88 degrees 25 minutes 53 seconds East, 1360.54 feet to an iron pin set;

South 79 degrees 06 minutes 03 seconds East, 506.06 feet;

Thence, along the West-line of Perine (324-317 D.R.) and an existing fence-line

South 2 degrees 35 minutes 52 seconds West, 545.54 feet to the point of beginning and containing 41.06 acres.

Subject to all easements and rights of way or record.

Iron pins set are 5/8" by 30" long rebar

Bearings based on N.A.D. 83 Grid North

The above description is based on a field survey completed June 2013 by

John M. Branner P.S. 6805



John M. Branner
Description Checked for
Mathematical Accuracy
Athens County
ENGINEER'S OFFICE
BY: *C. Williams*
DATE: 6/25/13

Plat of Survey of 41.061 Acres
in Section 32, T. 6. R.13, Ames Twp.,
Athens County, Ohio



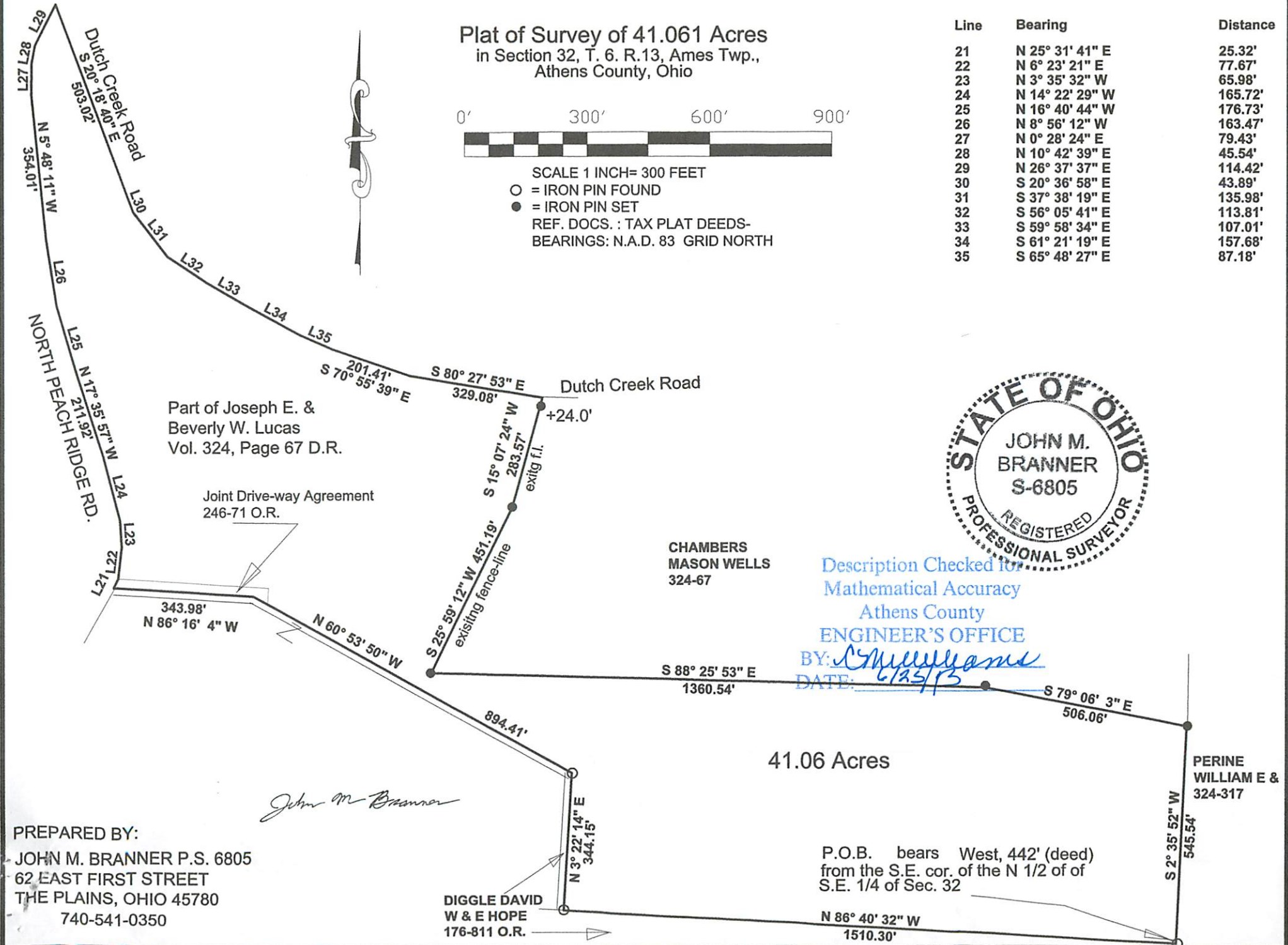
SCALE 1 INCH= 300 FEET

○ = IRON PIN FOUND

● = IRON PIN SET

REF. DOCS. : TAX PLAT DEEDS-
BEARINGS: N.A.D. 83 GRID NORTH

Line	Bearing	Distance
21	N 25° 31' 41" E	25.32'
22	N 6° 23' 21" E	77.67'
23	N 3° 35' 32" W	65.98'
24	N 14° 22' 29" W	165.72'
25	N 16° 40' 44" W	176.73'
26	N 8° 56' 12" W	163.47'
27	N 0° 28' 24" E	79.43'
28	N 10° 42' 39" E	45.54'
29	N 26° 37' 37" E	114.42'
30	S 20° 36' 58" E	43.89'
31	S 37° 38' 19" E	135.98'
32	S 56° 05' 41" E	113.81'
33	S 59° 58' 34" E	107.01'
34	S 61° 21' 19" E	157.68'
35	S 65° 48' 27" E	87.18'



Description Checked for
Mathematical Accuracy
Athens County
ENGINEER'S OFFICE
BY: *William*
DATE: *6/25/13*

John M. Branner

PREPARED BY:
JOHN M. BRANNER P.S. 6805
62 EAST FIRST STREET
THE PLAINS, OHIO 45780
740-541-0350

DIGGLE DAVID
W & E HOPE
176-811 O.R.

P.O.B. bears West, 442' (deed)
from the S.E. cor. of the N 1/2 of of
S.E. 1/4 of Sec. 32

41.06 Acres