

Description:

Beginning at the N. E. corner of Section 32, T6, R13, thence South 2029.50 ft. to a point, thence N 85°W, 441.54 ft. to a Chestnut Oak, thence S 5° W, 980 ft. to an Oak Tree, the principal place of beginning and passing an iron pin at 611 ft. Thence S 5° W., 1027 ft. to a fence corner post, thence S 85° E, 442 ft. to a (30" Oak) tree, thence S 5° W, 227.5 ft. to a fence post, thence N 82° 2' E, 218.2 ft. to a (12" Ash) tree, thence N 51° E, 273 ft. to a (30" Ash) tree, thence N 40° 40' E, 166 ft. to a 18" Sycamore) tree, thence N 30° 40' E, 43 ft. to a (30" Ash) tree, thence N 48° W, 628.5 ft. to a Hub, thence N 26° 40' E, 233.5 ft. to a (30" Ash) tree, thence N 60° 50' W, 603.5 ft. to the point of beginning, containing 15.52 acres, more or less. The acreage was taken from a 60.45 acre tract presently owned by Lewis Hixson, ref. vol. 208-276.

Description checked for
Mathematical Accuracy
ATHENS COUNTY
ENG. NEER'S OFFICE

BY: *[Signature]*

DATE 8-22-74

Sec 32 Ams

17

DESCO
CONSULTING ENGINEERS

P. O. BOX 58
NELSONVILLE, OHIO 45764

PHONE 753-1181

Description of 0.46 Acre Tract

The tract is located in Section 26, T6, R13, Anes Township and described as follows: Beginning at the N.E. corner of Sec. 32, T6, R13, thence South 2029.50 ft. to a point, thence N 85° 00' W, 441.54' to a (Chestnut Oak) tree, thence S 5° W 745.80 ft. to the center line of county road 34, thence along centerline of said county road S 73° 30' E, 182 ft. to a point in the center of a concrete bridge, thence continuing along center line S 68° 40' E, 243.5 ft. to a point, thence S 67° 40' E, 292 ft. to a point and the actual point of beginning for this tract: thence following the centerline of the county road S 65° 40' E, 221.3 ft. to a point, thence leaving said road S 50° 30' W, 105 ft. to the center of a creek bed, thence following the centerline of said creek in a N 70° 40' W direction, 176.70 ft. to a 6" (willow) tree, thence N 24° 46' E, 109.54 ft to the center of county road 34 and the actual point of beginning, containing 0.46 acres, more or less.

Description checked for
Mathematical Accuracy
ATHENS COUNTY
ENGINEER'S OFFICE

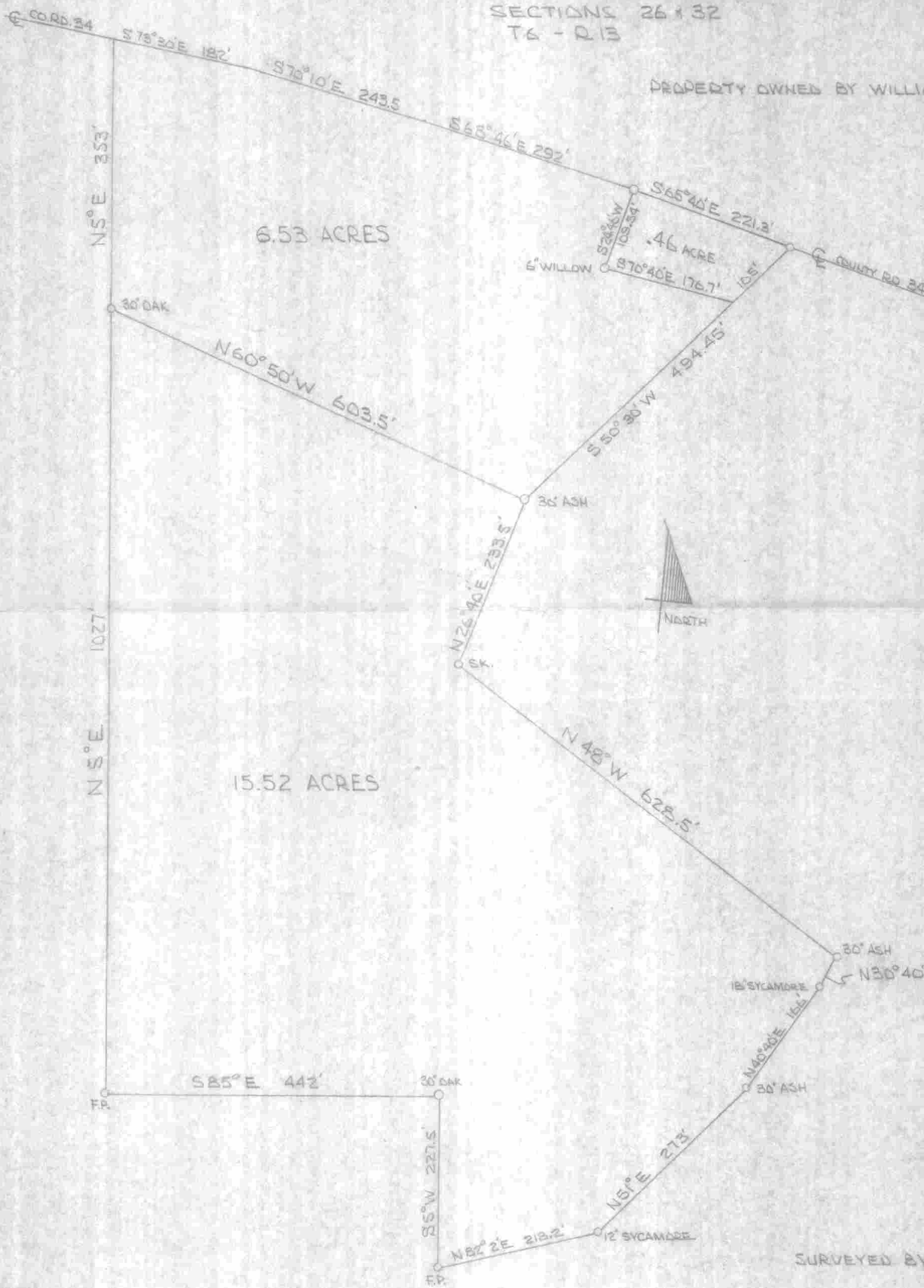
BY: 

DATE: 8-22-74

18

STATE OF OHIO
 COUNTY OF ATHENS
 AMES TOWNSHIP
 SECTIONS 26 & 32
 T6 - R13

PROPERTY OWNED BY WILLIAM PERINE



10

SURVEYED BY - R.E. MAIDEN P.E.
 REG. NO. 28005

11