

**DESCRIPTION OF 18.40 ACRES
SECTIONS 7 & 13, TOWNSHIP 6, RANGE 13
AMES TOWNSHIP, ATHENS COUNTY, OHIO**

Situated in Sections 7 and 13, Township 6, Range 13, Ames Township, Athens County, Ohio and further described as follows:

Commencing at a stone found, said stone, by deed in Volume 212, page 738 of Official Records of Athens County, being South 84 degrees 18 minutes 59 seconds East 821.53 feet from the northwest corner of the southwest quarter of Section 7 and being the true point of beginning; thence, South 37 degrees 45 minutes 00 seconds West a distance of 1920.32 feet, passing by an iron pin found at 660.83 feet, to a railroad spike found in the center of State Route No. 690; thence, South 47 degrees 35 minutes 19 seconds East a distance of 182.15 feet to a point in the center of said road; thence, South 50 degrees 45 minutes 46 seconds East a distance of 102.64 feet to a point in the center of said road; thence, South 56 degrees 40 minutes 48 seconds East a distance of 84.78 feet to a railroad spike found in the center of said road; thence, South 61 degrees 34 minutes 47 seconds East a distance of 6.68 feet to a railroad spike found in the center of said road; thence, South 45 degrees 25 minutes 12 seconds East a distance of 52.86 feet to a nail set in the center of said road; thence, North 23 degrees 10 minutes 43 seconds East a distance of 154.30 feet to an iron pin set; thence, North 89 degrees 39 minutes 36 seconds East a distance of 157.40 feet to a nail set in the center of a field road; thence, along the center of said field road the following courses and distances:

North 81 degees 22 minutes 20 seconds East a distance of 94.05 feet to a nail set; South 70 degrees 48 minutes 57 seconds East 162.68 feet to a point; North 82 degrees 02 minutes 52 seconds East 37.33 feet to a point; North 50 degrees 34 minutes 19 seconds East 30.48 feet to a point; North 14 degrees 15 minutes 40 seconds East 30.06 feet to a point; North 14 degrees 10 minutes 33 seconds West 163.17 feet to an iron pin set; North 07 degrees 21 minutes 52 seconds East 163.88 feet to a nail set; North 25 degrees 32 minutes 28 seconds East 144.30 feet to an iron pin set; North 15 degrees 43 minutes 01 seconds East 215.88 feet to an iron pin set; thence, North 06 degrees 49 minutes 05 seconds West a distance of 270.28 feet to an iron pin set; thence, North 26 degrees 52 minutes 09 seconds East a distance of 284.05 feet to an iron pin set; thence, North 47 degrees 27 minutes 05 seconds East a distance of 623.09 feet to an iron pin set; thence, North 84 degrees 18 minutes 59 seconds West a distance of 344.14 feet to the true point of beginning.

Containing 18.40 acres of which 10 .36 acres are in Section 7 and 8.04 acres in Sections 7 and 13, and being the 8.04 acres previously transferred, to grantee from grantor, by deed from Abbot P. and Virginia J. Smith to Abbot P., IV and Karen Jean Smith recorded in Volume 212 page 738 Official Records of Athens County.

Subject to all reservations, right-of-ways, leases and easements of record.

Description checked for
Mathematical Accuracy
ATHENS COUNTY
ENGINEER'S OFFICE
BY: S. Blausen

DATE: 12-17-98

LAST DEED REFERENCE: Volume 19 page 489 and Volume 212 page 738 of the Official Records of Athens County in the Athens County Recorder's Office.

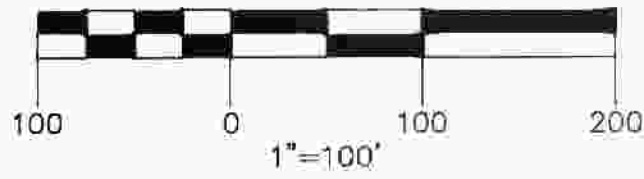
The bearings in the above description are based on the bearings used in the deed recorded in Volume 212 page 738 of the Official Records of Athens County in the Athens County Recorder's Office.

The above description was prepared from an actual survey of the premises made by Joseph C. Roman, Registered Surveyor No. s-6461, in November and December 1998.

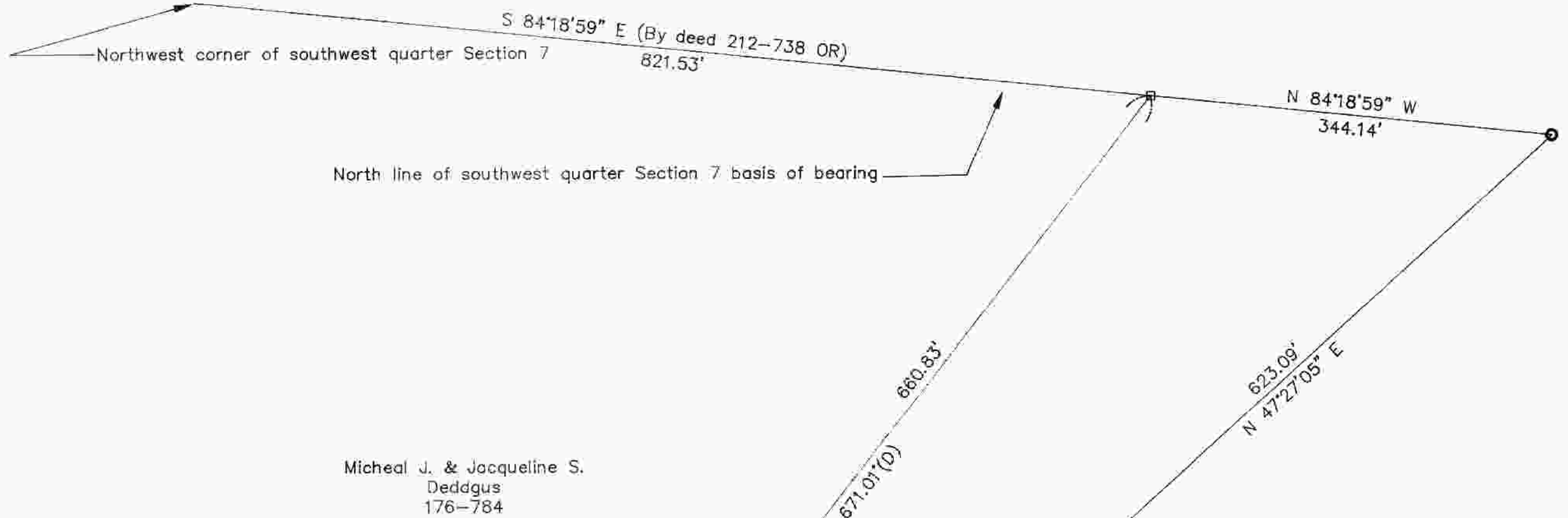
Iron pin set in the above description is a 5/8 inch diameter rebar approximately 30 inches in length with an 1-1/4 inch diameter plastic identification cap.

PLAT OF 18.40 ACRES SECTIONS 7 & 13, TOWNSHIP 6, RANGE 13 AMES TOWNSHIP, ATHENS COUNTY, OHIO

Ray & Lois C. Chadwell
203-582



LINE	DIRECTION	DISTANCE
P-1	S 56°40'48" E	84.78'
P-2	S 61°34'47" E	6.68'
P-3	S 45°25'12" E	52.86'
P-4	N 81°22'20" E	94.05'
P-5	N 82°02'52" E	37.33'
P-6	N 50°34'19" E	30.48'
P-7	N 14°15'40" E	30.06'



Micheal J. & Jacqueline S. Deddus
176-784

- Iron pin set - 5/8 inch diameter rebar 30 inches in length with an 1 1/4 diameter plastic identification cap
- Iron pin found
- △ Rail road spike found
- Stone found
- Nail set
- ⊙ Iron pin called for deed 212-738 OR

REFERENCES
Tax Plat
Deed
Survey Plat

Abbot P. Smith
19-489 OR

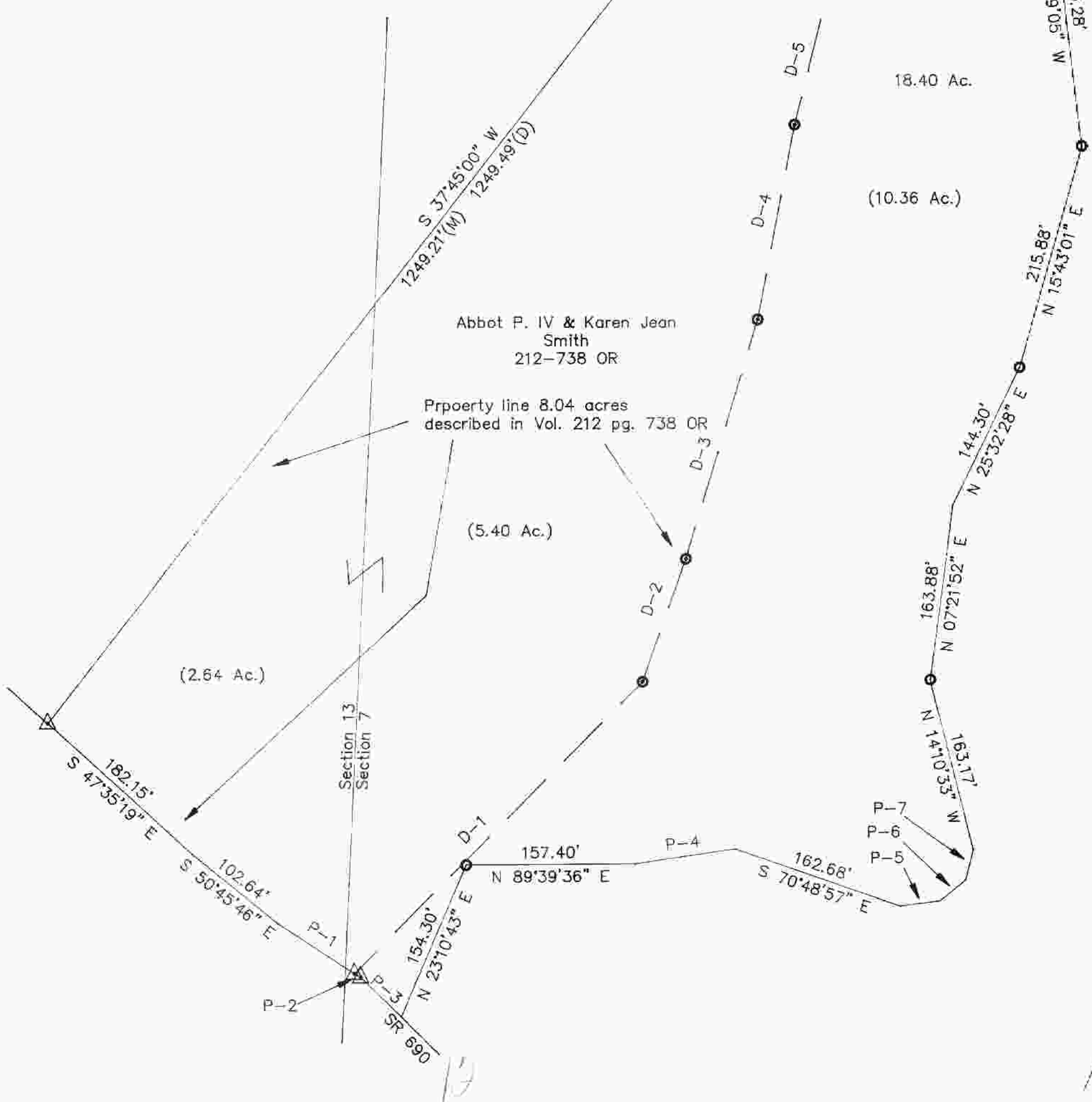
Property line of 8.04 acres Vol. 212 pg. 738 OR

LINE	DIRECTION	DISTANCE
D-1	N 86°00'40" E	554.49'
D-2	N 19°24'04" E	121.54'
D-3	N 16°32'16" E	235.23'
D-4	N 10°36'05" E	185.44'
D-5	N 14°14'38" E	151.70'
D-6	N 06°41'53" E	281.65'
P-1	S 56°40'48" E	84.78'

Description checked for
Mathematical Accuracy
ATHENS COUNTY
ENGINEER'S OFFICE
BY: *J. Blouse*
DATE: 12-17-98

I hereby certify this plat was prepared from an actual survey of the premises made in November 1998.

Joseph C. Roman
Joseph C. Roman, R.S. 6461
740-753-2051
380 Elizabeth St.
Nelsonville, Ohio 45764



13

14