

DESCRIPTION OF A 35.71 ACRE TRACT

Situated in Fraction 3 of Section 9., T.6, R.13, Ames Township, Athens County, Ohio and being the same tract as described in Volume 100, Page 13 of the Athens County Official Records and being more particularly described as follows:

Beginning at an iron pin found at the North-east corner of Fraction 3;  
thence, along the East-line of said tract, South 5 degrees 48 minutes 14 seconds West, a distance of 669.22 feet to an iron pin set ;  
thence, along the North-line of a 1.99 acre tract, North 84 degrees 48 minutes 10 seconds West, a distance of 164.81 feet to an iron pin set in the East-line of a 1.91 acre tract (Vol. 301, Page 445);  
thence North 10 degrees 31 minutes 00 seconds West, a distance of 101.33 feet to an iron pin set in the North-east corner of said tract;  
thence North 84 degrees 48 minutes 10 seconds West, a distance of 208.75 feet to an iron pin set in the North-west corner of said tract;  
thence South 10 degrees 31 minutes 00 seconds East, a distance of 326.73 feet to an iron pin set at the North-east corner of a 10.74 acre tract (Vol. 305, Page 389);  
thence North 83 degrees 11 minutes 13 seconds West, a distance of 700.00 feet to an iron pin set at the North-west corner of a 10.74 acre tract;  
thence South 26 degrees 14 minutes 54 seconds East, a distance of 700.00 feet to an iron pin set at the South-west corner of said tract;  
thence North 83 degrees 14 minutes 06 seconds West, a distance of 824.62 feet to a point;  
thence North 06 degrees 33 minutes 38 seconds East, a distance of 1456.37 feet to a point in the North-line of Fraction 3;  
thence, along said line South 84 degrees 12 minutes 41 seconds East, a distance of 1443.88 feet to the POINT OF BEGINNING; said described tract containing 35.71 acres.  
Subject to all easements and rights of way of record.

The above description is based on a field survey by John M. Branner P.S. 6805 completed March 1995

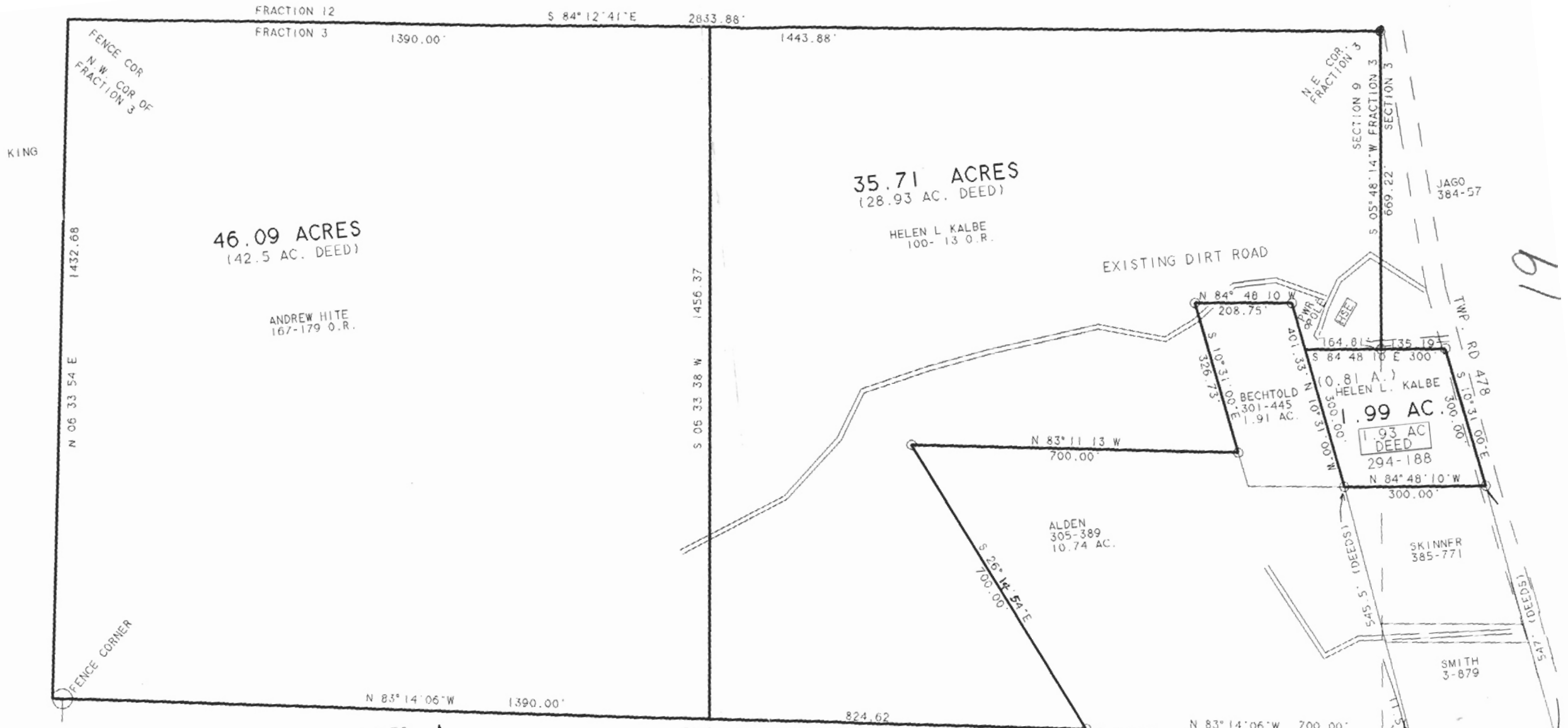
Description checked for  
Metrical Accuracy  
ATHENS COUNTY  
ENGINEER'S OFFICE  
By Blenda King  
Date 3/24/95



17

AMS # 9

CALFNTINE  
107.85 AC  
371 393



19

SURVEY OF THREE EXISTING TRACTS  
IN FRACTION 3, SECTION 9 AND  
SECTION 3 T. 6. R. 13 AMES TWP.  
ATHENS COUNTY, OHIO

SURVYED MARCH 1995

JOHN M. BRANNER P.S. 6805  
12500 N. PEACH RIDGE ROAD  
ATHENS, OHIO 614-592-5778



SCALE 1 INCH = 200 FEET  
○ - IRON PIN SET 5/8" REBAR  
● - IRON PIN FOUND  
- - - ASSUMED BEARINGS