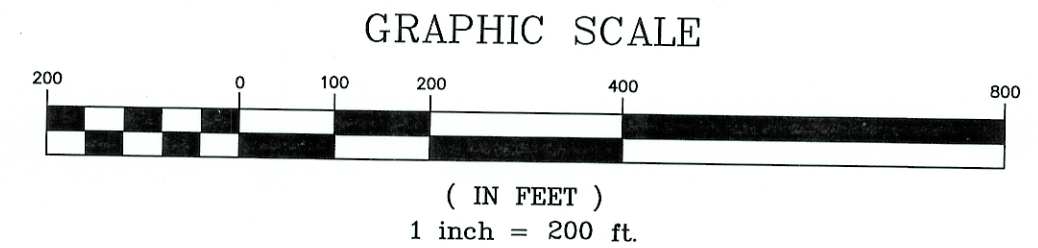




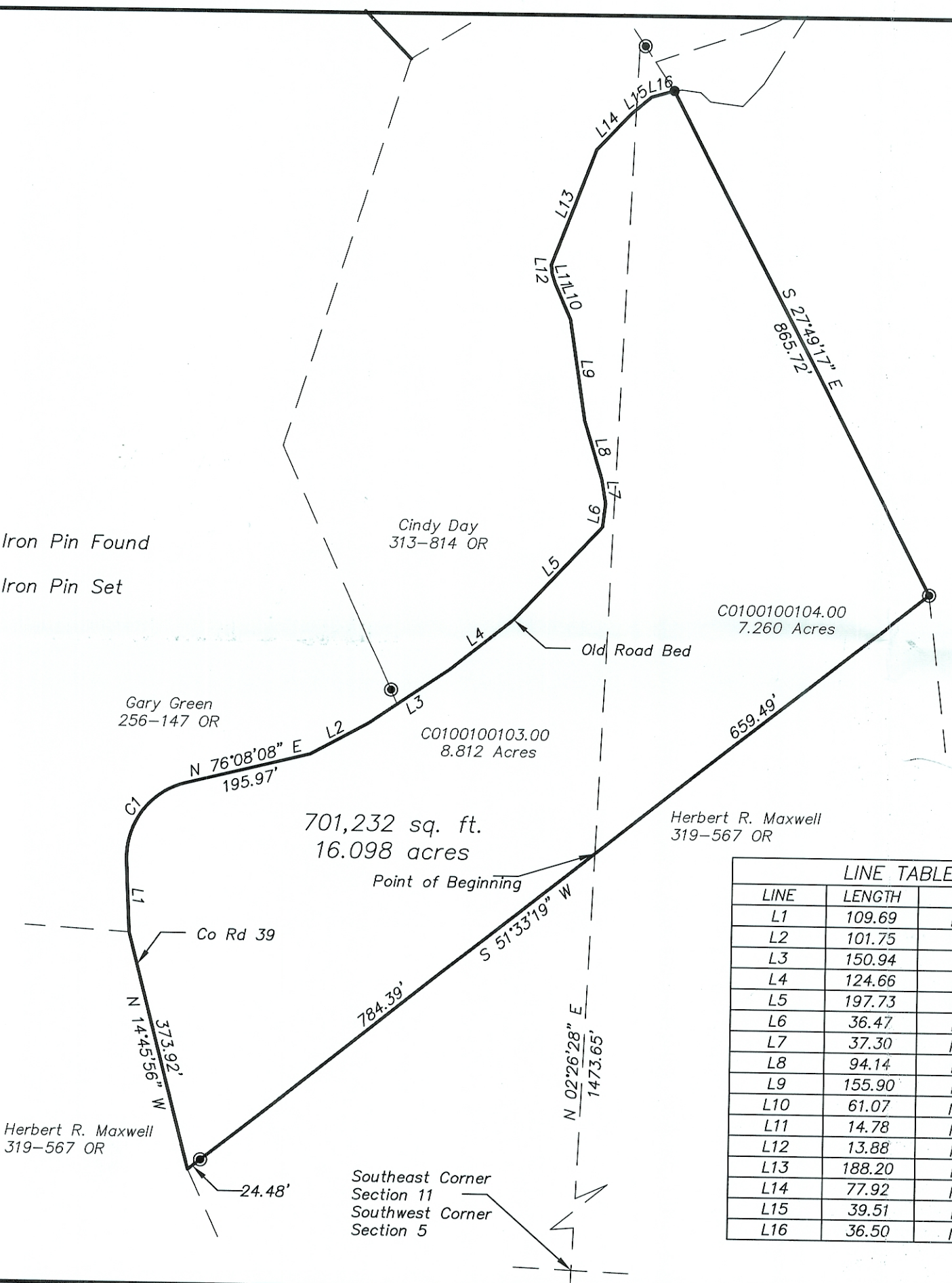
● = Iron Pin Found
 ● = Iron Pin Set



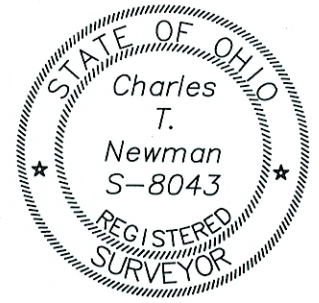
Plat of Survey of 16.098 Acres
 Situated in Section 5 and 11, Town 6,
 Range 13, Ames Township,
 Athens County, Ohio
 Surveyed October 2007 for:
 HR Maxwell

Charles T. Newman
 Charles T. Newman

Description Checked for
 Mathematical Accuracy
 Athens County
 ENGINEER'S OFFICE
 BY: *S. Blouse*
 DATE: 10-18-07



LINE TABLE			CURVE TABLE			
LINE	LENGTH	BEARING	CURVE	RADIUS	CHORD BEARING	CHORD LENGTH
L1	109.69	N02°59'54"W	C1	118.07'	N 36°34'07" E	150.42'
L2	101.75	N61°31'21"E				
L3	150.94	N55°42'17"E				
L4	124.66	N50°27'17"E				
L5	197.73	N43°18'48"E				
L6	36.47	N06°53'46"E				
L7	37.30	N09°47'04"W				
L8	94.14	N17°18'58"W				
L9	155.90	N08°53'11"W				
L10	61.07	N24°03'28"W				
L11	14.78	N17°22'48"W				
L12	13.88	N06°18'21"W				
L13	188.20	N21°02'44"E				
L14	77.92	N43°46'42"E				
L15	39.51	N50°11'56"E				
L16	36.50	N74°08'32"E				



Member of Professional Land Surveys, Subdivisions
 Land Surveyors of Ohio

C. TIM NEWMAN
 Professional Surveyor

66 Elmwood Place
 Athens, Ohio 45701

740-594-1884
 FAX 740-594-9413