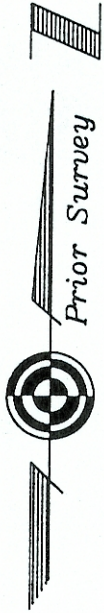


Morgan County
Athens County
Northwest Corner Section 36

- = Iron Pin Found
- = Iron Pin Set
- = Stone Found

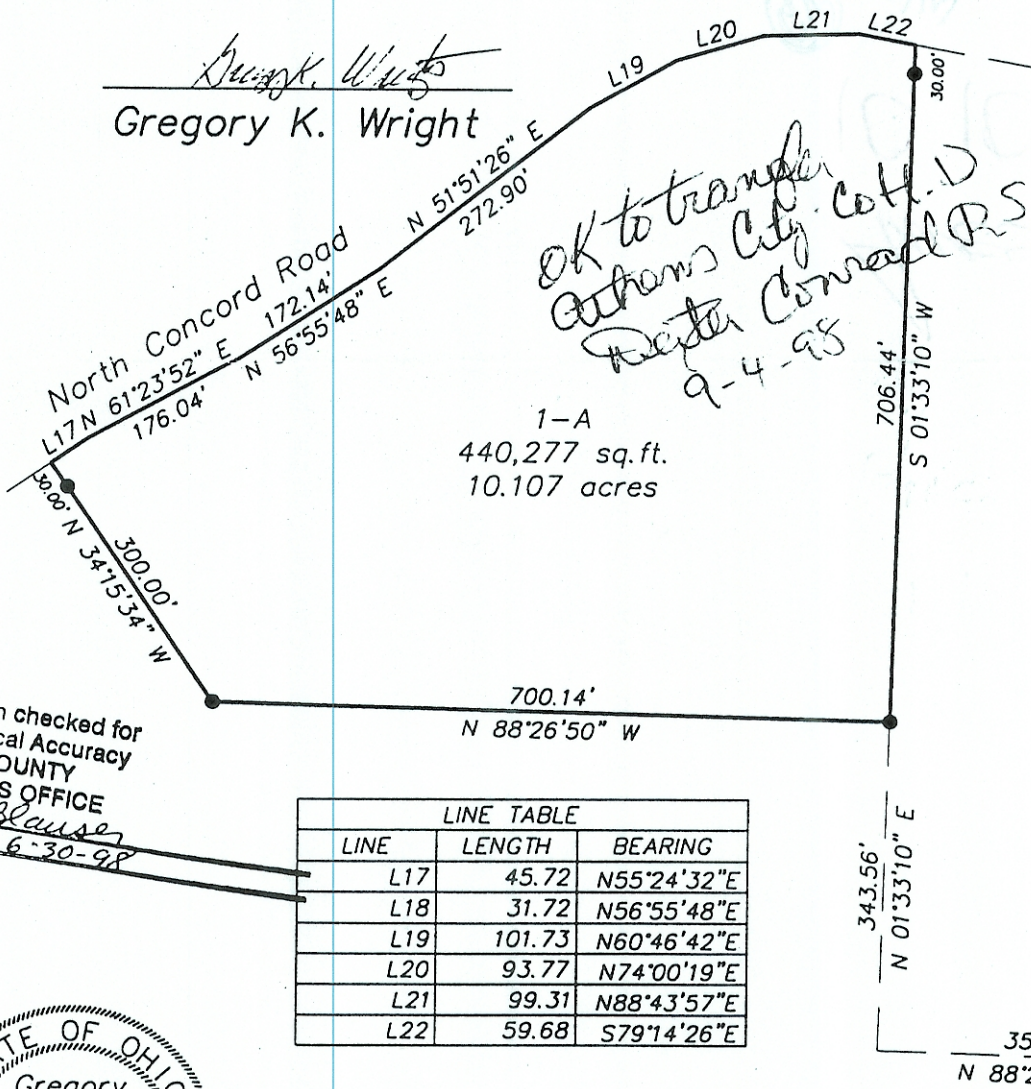
Parcel 1-A
Survey of 10.107 Acres
Situated in Section 36,
Town 6, Range 13, Ames
Township, Athens County,
Ohio
Surveyed June 1998



Gregory K. Wright
Gregory K. Wright

*OK to transfer
Athens City Col. D
Deeds Concord P.S
9-4-98*

1-A
440,277 sq. ft.
10.107 acres



Description checked for
Mathematical Accuracy
ATHENS COUNTY
ENGINEER'S OFFICE
BY: *S. Blausen*
DATE: *6-30-98*

LINE TABLE		
LINE	LENGTH	BEARING
L17	45.72	N55°24'32"E
L18	31.72	N56°55'48"E
L19	101.73	N60°46'42"E
L20	93.77	N74°00'19"E
L21	99.31	N88°43'57"E
L22	59.68	S79°14'26"E



GRAPHIC SCALE



(IN FEET)
1 inch = 200 ft.