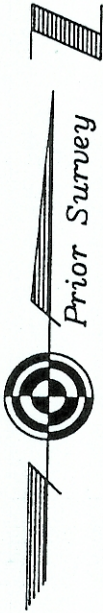


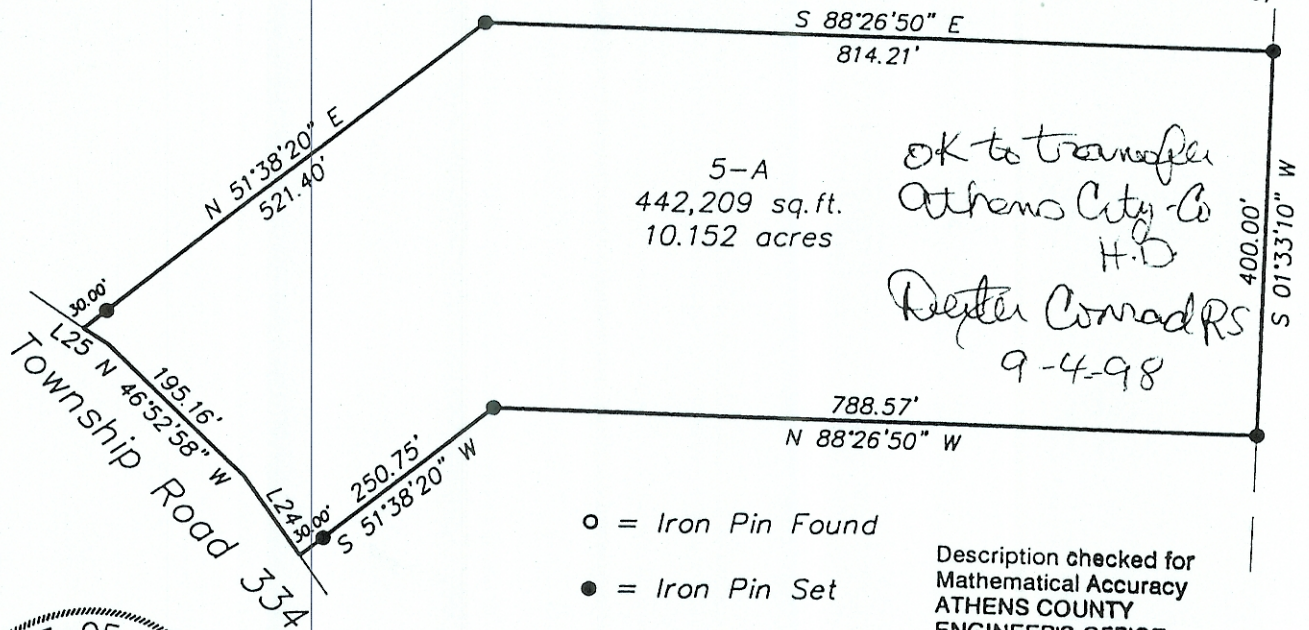
Morgan County  
Athens County  
Northwest Corner Section 36

Parcel 5-A  
Survey of 10.152 Acres  
Situated in Section 36,  
Town 6, Range 13, Ames  
Township, Athens County,  
Ohio  
Surveyed June 1998



*Gregory K. Wright*  
Gregory K. Wright

LINE TABLE		
LINE	LENGTH	BEARING
L24	101.16	N35°15'44"W
L25	30.96	N57°37'06"W



5-A  
442,209 sq. ft.  
10.152 acres

*OK to transfer  
Athens City Co  
H.D.  
Dexter Conrad RS  
9-4-98*



- = Iron Pin Found
- = Iron Pin Set
- = Stone Found

Description checked for  
Mathematical Accuracy  
ATHENS COUNTY  
ENGINEER'S OFFICE  
BY: *S. Blausch*  
DATE: *6-30-98*

