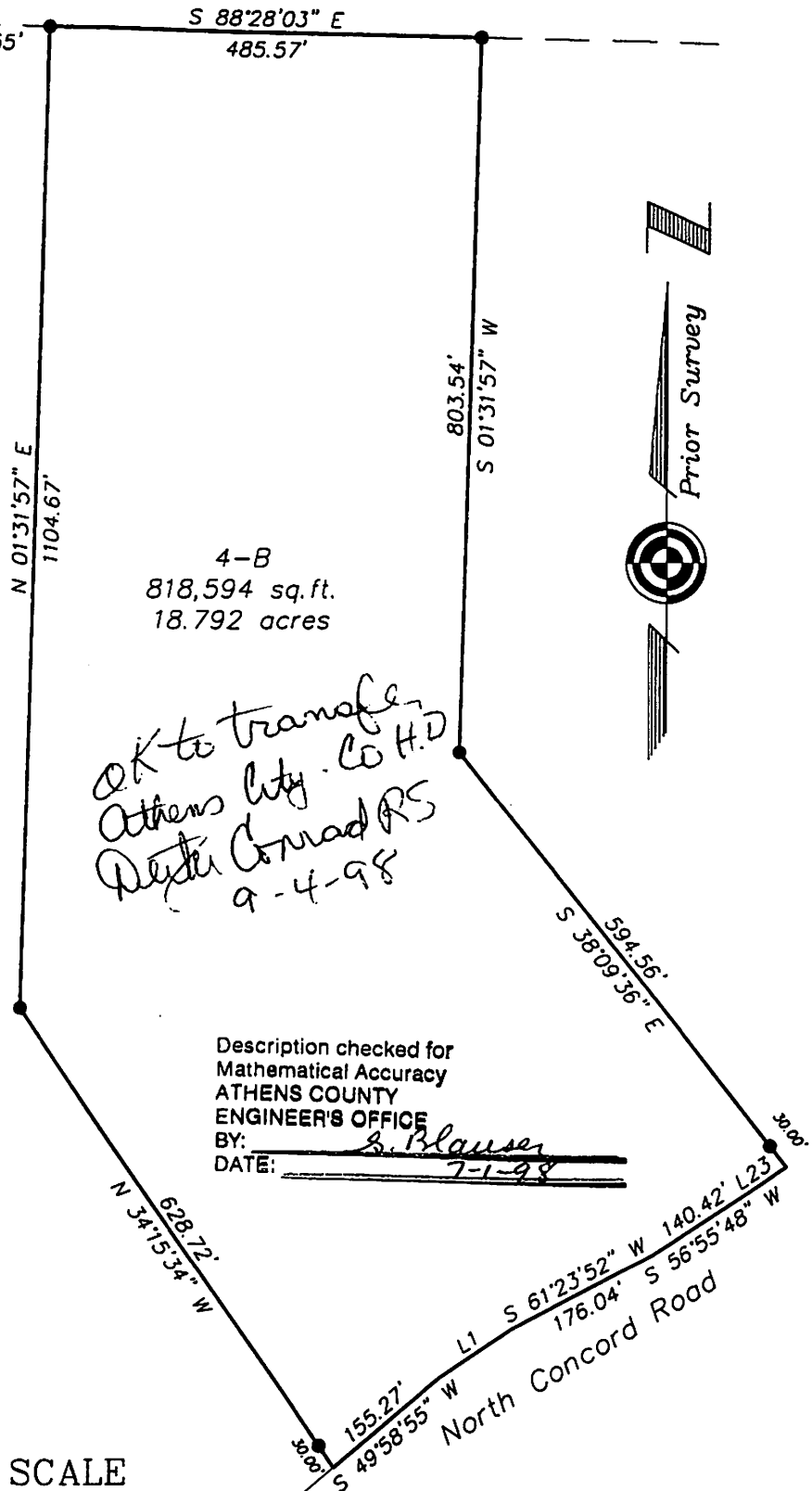
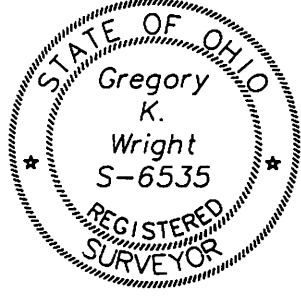


Morgan County
Athens County
Northwest Corner Section 36
Parcel 4-B
Survey of 18.517 Acres
Situated in Section 36,
Town 6, Range 13, Ames
Township, Athens County,
Ohio
Surveyed June 1998

Gregory K. Wright
Gregory K. Wright



*OK to transfer
Athens City - Co H.D.
Dexter Conrad RS
9-4-98*

Description checked for
Mathematical Accuracy
ATHENS COUNTY
ENGINEER'S OFFICE
BY: *S. Blausen*
DATE: 7-1-98

LINE TABLE		
LINE	LENGTH	BEARING
L1	99.93	S55°24'32"W
L2	82.61	S56°35'34"W
L3	47.26	S70°34'23"W
L4	49.12	S75°20'24"W
L5	65.40	S88°44'24"W
L6	99.31	S88°43'57"W
L7	57.26	S74°00'19"W
L8	36.51	S74°00'19"W
L9	101.73	S60°46'42"W
L10	31.72	S56°55'48"W
L11	41.28	S49°58'55"W
L12	103.32	S50°37'31"W
L23	40.45	S55°50'01"W

GRAPHIC SCALE



(IN FEET)
1 inch = 200 ft.

- = Iron Pin Found
- = Iron Pin Set
- = Stone Found