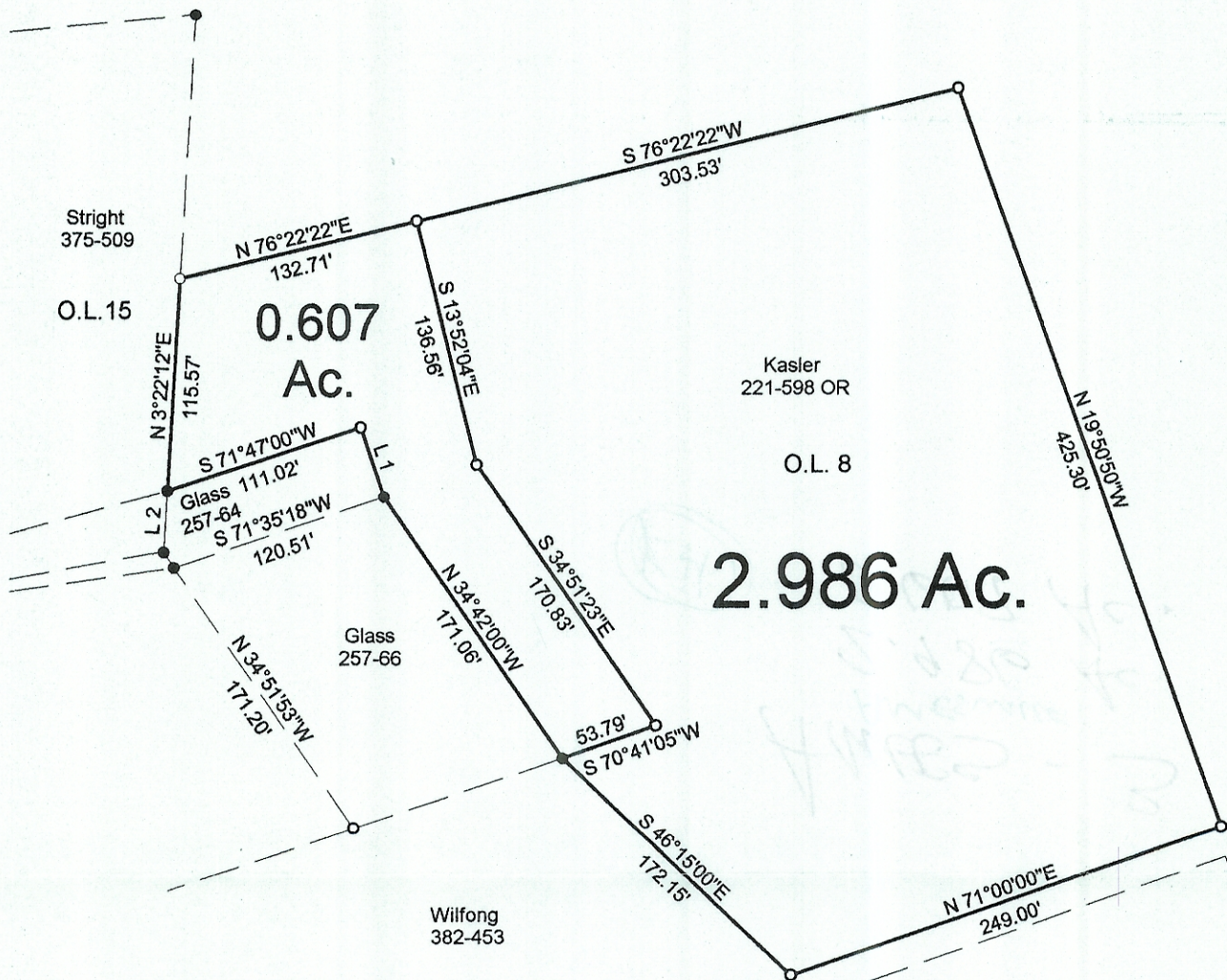


Harris

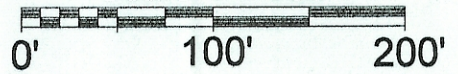


Note: This is a transfer between adjoining owners

Line	Bearing	Distance
1	N 18°15'00\"W	40.00'
2	N 3°14'55\"E	33.09'

- = Iron Pin Set
- = Iron Pin Found

Scale 1"=100'



Description Checked for
Mathematical Accuracy
Athens County
ENGINEER'S OFFICE
BY: S. Blause
DATE: 11-25-03

PLAT OF SURVEY OF 2 TRACTS
SURVEYED FOR DAVID KASLER
SUBDIVISION D.L. 8
TOWNSHIP AMES SECTION 3 TOWN 6 RANGE 13
CORPORATION AMESVILLE COUNTY ATHENS STATE OHIO
SCALE 1"= 100' DATE Nov, 2003

Kenneth E. Highland
80 Fayette St.
Nelsonville, Ohio 45764
740-753-1264

Kenneth E. Highland S-7581

