

Plat of Survey of 2 Tracts  
 Situated in Sections 3 and 4,  
 Town 6, Range 13, Ames Township,  
 Athens County, Ohio  
 Surveyed Dec. 1999 for:  
 Brad Thomas

*Gregory K. Wright*  
 Gregory K. Wright

OK. to transfer 3.000 acre  
 tract per Athens City - Co. Health  
 Dept. Easement for sewage discharge  
 to be recorded prior to home site development.  
 Chad C. Howe Es.  
 1/13/2000

Divella C. Jones  
 209-66 & 67  
 Deed

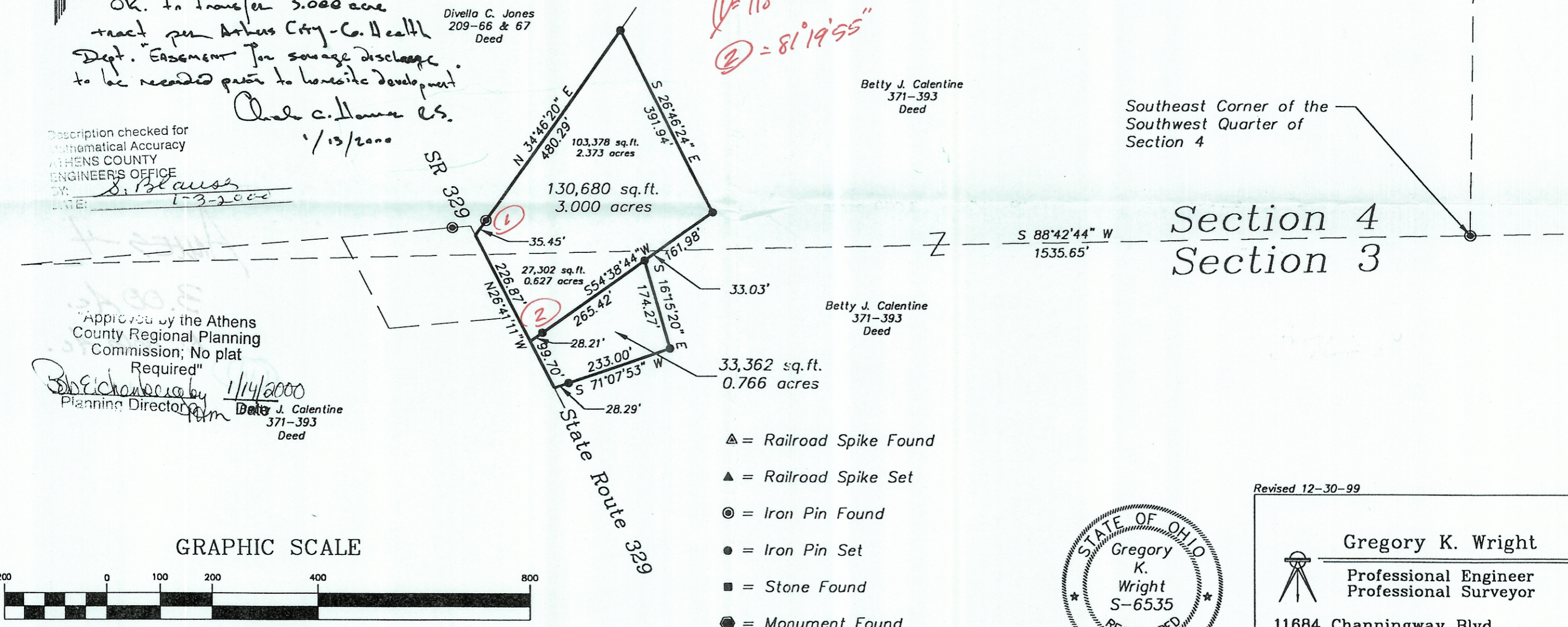
*∠ = 118°54'13"*  
*∠ = 81°19'55"*

Betty J. Calentine  
 371-393  
 Deed

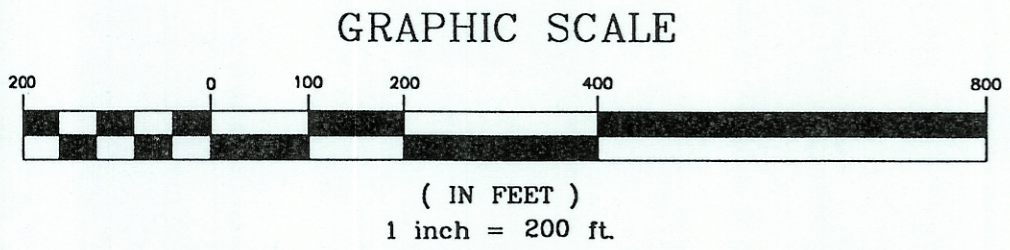
Southeast Corner of the  
 Southwest Quarter of  
 Section 4

Description checked for  
 Mathematical Accuracy  
 ATHENS COUNTY  
 ENGINEERS OFFICE  
 BY: *S. Blauss*  
 DATE: 1-3-2000

"Approved by the Athens  
 County Regional Planning  
 Commission; No plat  
 Required"  
*Richard [unclear]* 1/14/2000  
 Planning Director  
 Date *J. Calentine*  
 371-393  
 Deed



Section 4  
 Section 3



Revised 12-30-99

**Gregory K. Wright**  
 Professional Engineer  
 Professional Surveyor

11684 Channingway Blvd  
 The Plains, Ohio 45780  
 740-797-4142  
 FAX 740-797-8623