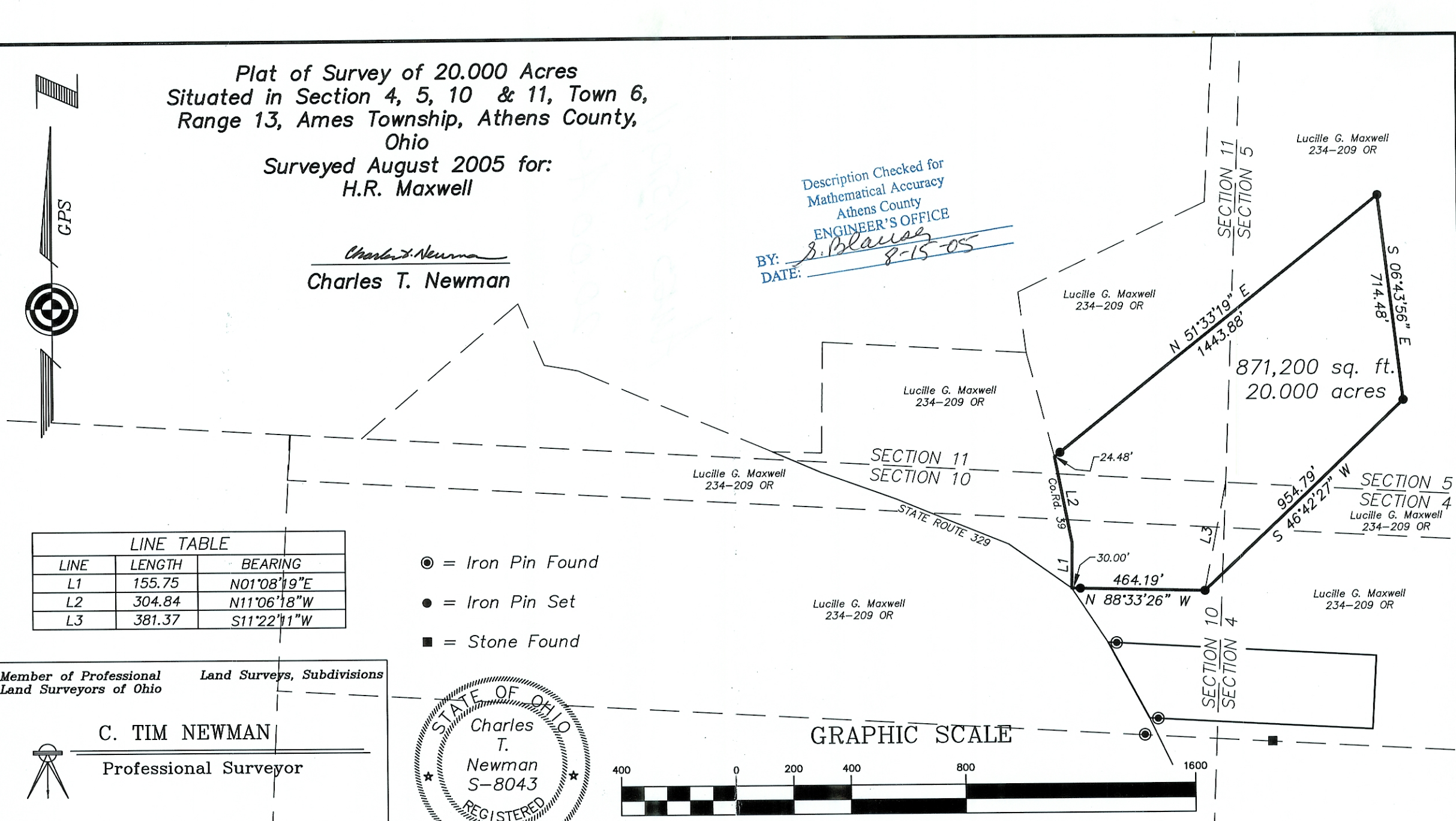


Plat of Survey of 20.000 Acres
 Situated in Section 4, 5, 10 & 11, Town 6,
 Range 13, Ames Township, Athens County,
 Ohio

Surveyed August 2005 for:
 H.R. Maxwell

Charles T. Newman
 Charles T. Newman

Description Checked for
 Mathematical Accuracy
 Athens County
 ENGINEER'S OFFICE
 BY: *B. Blaus*
 DATE: *8-15-05*

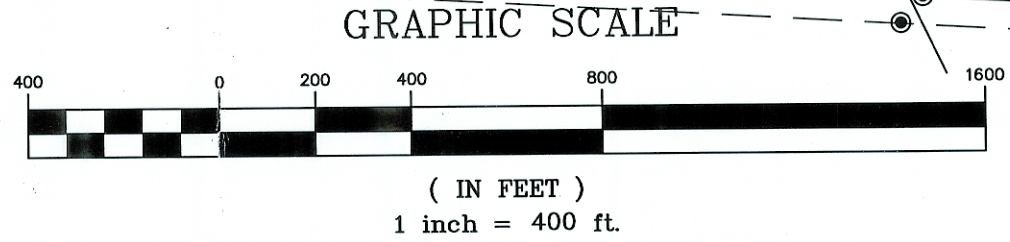
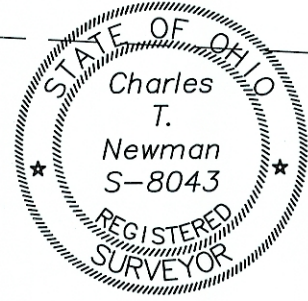


LINE TABLE		
LINE	LENGTH	BEARING
L1	155.75	N01°08'19\"E
L2	304.84	N11°06'18\"W
L3	381.37	S11°22'11\"W

- ⊙ = Iron Pin Found
- = Iron Pin Set
- = Stone Found

Member of Professional Land Surveys, Subdivisions
 Land Surveyors of Ohio

C. TIM NEWMAN
 Professional Surveyor



66 Elmwood Place
 Athens, Ohio 45701

740-594-1884
 FAX 740-594-9413