

## Description of 0.005 Acres

Situated in Inlots 27 and 28, City of Athens, Town 9, Range 14, Athens Township, Athens County, Ohio, and being more fully described as follows:

Commencing at the Northwest Corner of Inlot 27;

Thence along the west line of said Inlot 27,  
S00°18'57"E 48.84 feet to the point of beginning of the tract herein described;

Thence along a common line to (Satmary 254-1956 OR) and (Tom 39-325 OR)  
S73°47'42"E 10.69 feet to a point;

Thence along a wall and a common line to (Prokos 352-867, 447-2005) and (Tom 39-325 OR)  
S15°35'42"W 19.34 feet to a point;

Thence along a wall and over the lands of (Tom 39-325 OR) the following two courses,  
N73°47'42"W 10.69 feet to a point;

Thence continuing along a wall N15°35'42"E 19.34 feet to the point and place of beginning  
containing a total of 0.005 acres.

(0.001 acres being in Inlot 28) and (0.004 acres being in Inlot 27)


Said 0.005 acres is to remain continuous and contiguous to the tract north as described in  
Deed 254-1956 Official Records of Athens County.

Prior Deed Reference: 39-325 Official Records of Athens County

Auditor's Tax Number: A027100003700

Subject to easements, rights-of-way, covenants and agreements of record.

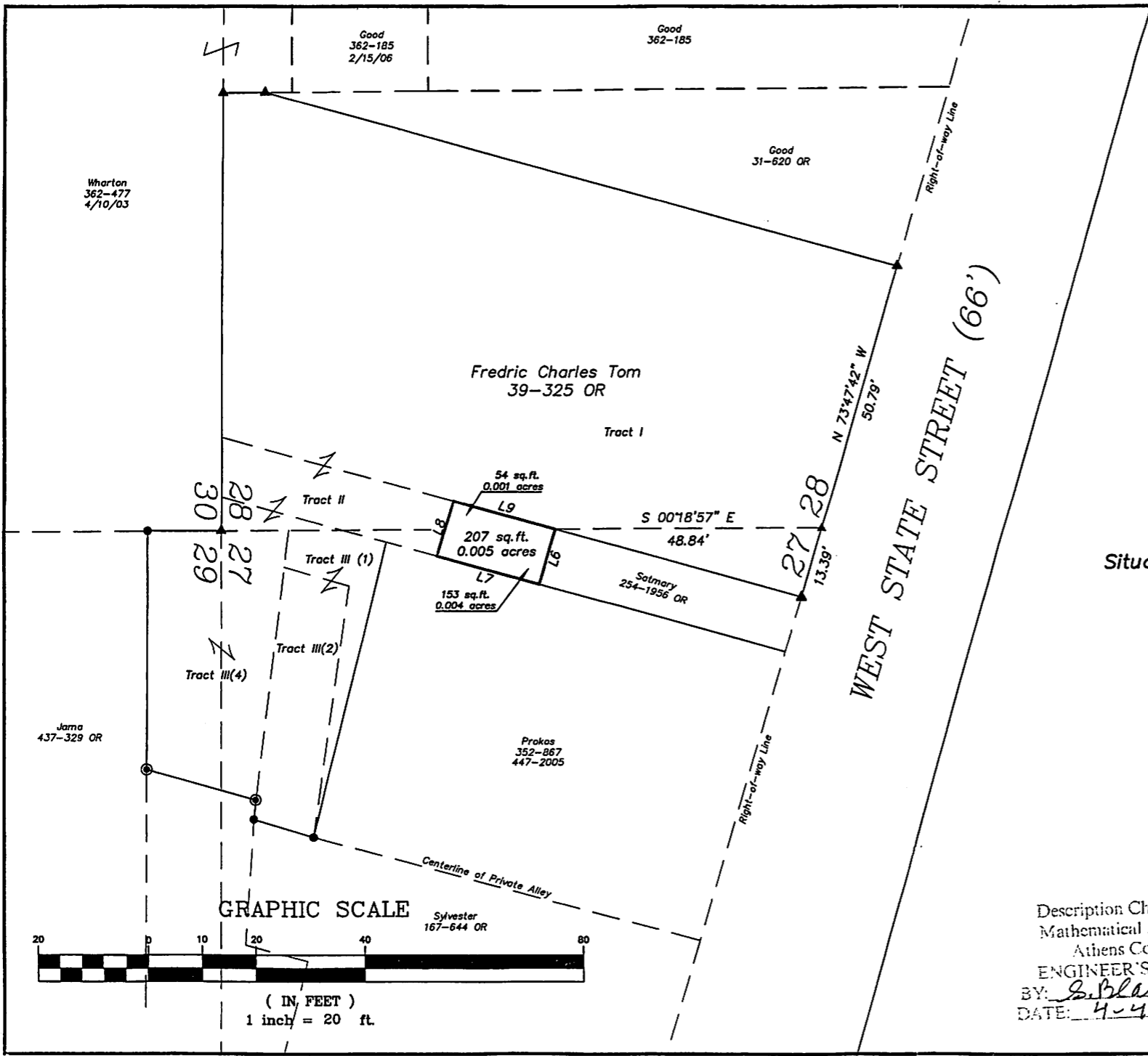
PK Survey monuments are ½" x 1½" MAG Nail set in concrete.

  
Charles T. Newman  
Professional Surveyor 8043  
66 Elmwood Place  
Athens, Ohio 45701  
April 4, 2012



Description Approved  
Jill A. Thompson  
Athens County Auditor

Description Checked for  
Mathematical Accuracy  
Athens County  
ENGINEER'S OFFICE  
BY: S. Blausey  
DATE: 4-4-12

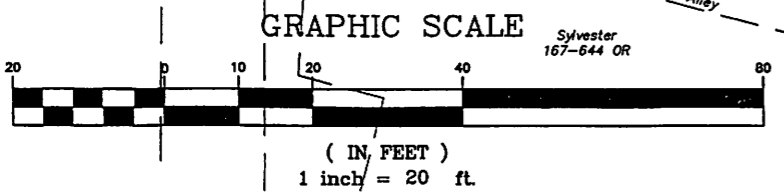
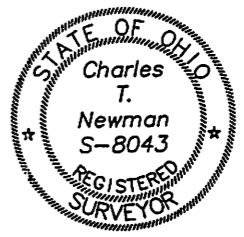


LINE TABLE		
LINE	LENGTH	BEARING
L6	10.69	S73°47'42"E
L7	19.34	S15°35'42"W
L8	10.69	N73°47'42"W
L9	19.34	N15°35'42"E

- ▲ = P.K. Nail Set
- ⊙ = Iron Pin Found
- = Iron Pin Set

Plat of Survey of 0.005 Acres  
 Situated in Inlots 27 and 28 In the City of Athens,  
 Athens Township, Athens County, Ohio  
 Surveyed March 2012 for:  
 Lamborn Studios

*Charles T. Newman*  
 Charles T. Newman



Description Checked for  
 Mathematical Accuracy  
 Athens County  
 ENGINEER'S OFFICE  
 BY: *S. Blaus*  
 DATE: *4-4-12*

Member of Professional Land Surveyors of Ohio Land Surveys, Subdivisions

**C. TIM NEWMAN**  
 Professional Surveyor

66 Elmwood Place Athens, Ohio 45701 740-594-1884 FAX 740-594-9413

