

Phone 740-753-1264
Fax 740-753-1264

Description of a 0.065 Acre Tract

Situated in Lease Lot 54, Section 13, T-9, R-14 Athens Township, Athens County, State of Ohio and being a part of the previously vacated portion of Clearview Drive and being more particularly described as follows:

BEGINNING at a point on the edge of said road vacation that bears South 87°41'54"West, 177.95 feet from the S.E. corner of Lot 11 Clearview Addition,

THENCE South 13°40'00"East, 47.78 feet to a point,

THENCE South 49°38'00"West, 51.62 feet to a point,

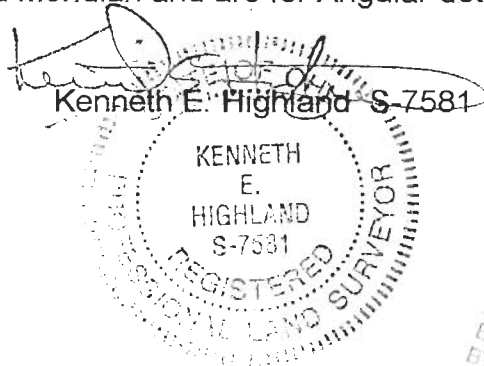
THENCE North 40°22'00"West, 21.02 feet to a point on the east line of Clearview Dr.,

THENCE along said line with a curve to the left having a radius of 95.20 feet the chord of which bears North 2°41'02"East, 62.35 feet to a point,

THENCE leaving said line North 87°41'54"East, 38.77 feet to the point of beginning and containing 0.065 acres.

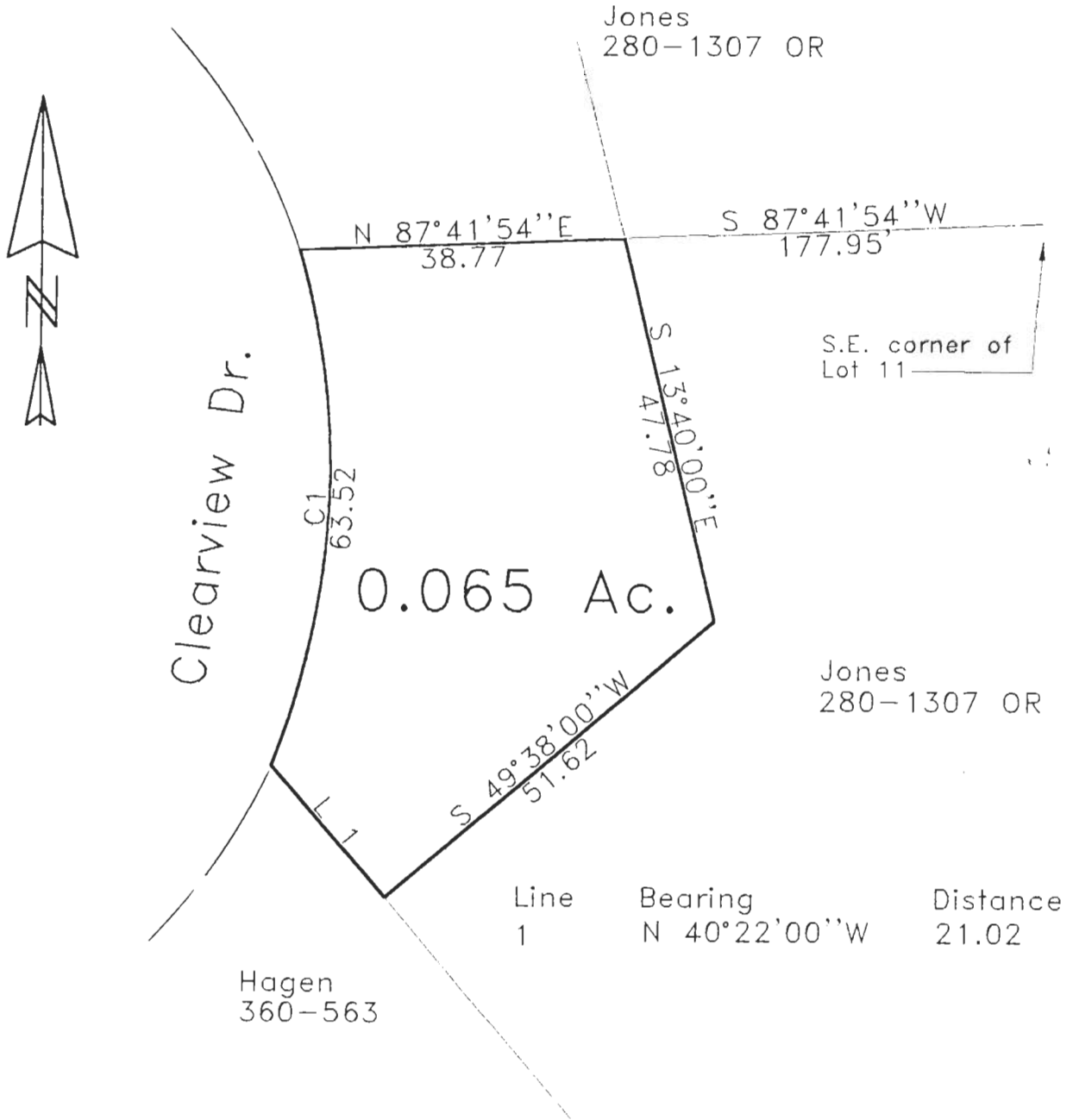
Subject to all Easements and Rights of Way of Record

Bearings are to an assumed Meridian and are for Angular determination only

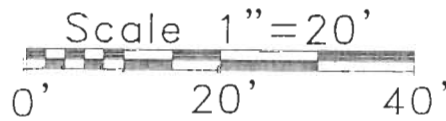


Description checked for
Mathematical Accuracy
ATHENS COUNTY
ENGINEER'S OFFICE
BY: *S. Blawie*
DATE: *1-18-2002*

000176



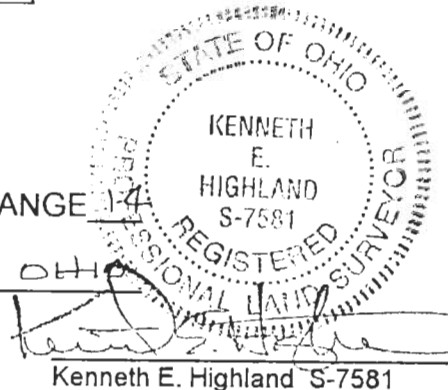
Curve	Delta Angle	Radius	Chord	Chord Bearing
1	38°12'57.0"	95.240	62.353	N 2°41'02.3" E



Checked for
Mathematical Accuracy
ATHENS COUNTY
ENGINEER'S OFFICE
BY: S. Blause
DATE: 1-18-2000

PLAT OF SURVEY OF A 0.065 AC. TRACT
 SURVEYED FOR SEAN JONES
 SUBDIVISION L.L. 54
 TOWNSHIP ATHENS SECTION 13 TOWN 9 RANGE 14
 CORPORATION - COUNTY ATHENS STATE OHIO
 SCALE 1"= 20' DATE JAN. 2000

Kenneth E. Highland
80 Fayette St.
Nelsonville, Ohio 45764
740-753-1264



000178

ATH # 13