



# SOUTHEASTERN LAND SURVEYS

LEONARD F. SWOYER  
REGISTERED PROFESSIONAL LAND SURVEYOR

3428 Pleasant Hill Road  
Athens, Ohio 45701  
740/593-8701

Situated in Farm Lot 56, Section 14, Athens Township, Athens City, Town 9, Range 14, Athens County, Ohio and described as follows:

Commencing at the estimated northeast corner of said Farm Lot 56 ; thence on an assumed bearing South 03 Degrees 03 Minutes 14 Seconds West a distance of 832.96 feet to a found iron pin at the northeast corner of a 23.5 acre tract described in Volume 287 Page 400 of the Athens County Official Deed Records; thence along the north line of said 23.5 acre tract North 85 Degrees 44 Minutes 38 Seconds West a distance of 869.78 feet to a found iron pin at the northwest corner of said 23.5 acre tract ; thence along the westerly line of said 23.5 acre tract South 20 Degrees 20 Minutes 31 Seconds West ,passing a found iron pin at 371.30 feet, for a total distance of 401.51 feet to a point on the east line of a 24.94 acre tract described in Tract II of Volume 352 Page 263 of the Athens County Official Deed Records ,THE TRUE POINT OF BEGINNING; thence continuing along the westerly line of said 23.5 acre tract and the east line of said 24.94 acre tract the following two bearings and distances: 1) South 08 Degrees 49 Minutes 33 Seconds East a distance of 787.88 feet to a point ; thence 2) South 18 Degrees 34 Minutes 33 Seconds East a distance of 63.78 feet to a point in Athens Township Road 32 at the southwest corner of said 23.5 acre tract at the northwest corner of a 0.45 acre tract described in Volume 103 Page 931 of the Athens County Official Deed Records ; thence along said road the following fourteen bearings and distances: 1) North 23 Degrees 15 Minutes 56 Seconds West a distance of 42.24 feet to a point; thence 2) North 28 Degrees 58 Minutes 32 Seconds West a distance of 28.46 feet to a point; thence 3) North 23 Degrees 33 Minutes 29 Seconds West a distance of 26.92 feet to a point; thence 4) North 22 Degrees 02 Minutes 50 Seconds West a distance of 27.88 feet to a point; thence 5) North 18 Degrees 43 Minutes 26 Seconds West a distance of 30.06 feet to a point; thence 6) North 18 Degrees 16 Minutes 59 Seconds West a distance of 28.10 feet to a point; thence 7) North 14 Degrees 22 Minutes 50 Seconds West a distance of 42.76 feet to a point; thence 8) North 12 Degrees 13 Minutes 00 Seconds West a distance of 31.30 feet to a point; thence 9) North 08 Degrees 30 Minutes 06 Seconds West a distance of 27.63 feet to a point; thence 10) North 07 Degrees 19 Minutes 51 Seconds West a distance of 27.28 feet to a point; thence 11) North 07 Degrees 28 Minutes 13 Seconds West a distance of 26.85 feet to a point; thence 12) North 05 Degrees 20 Minutes 23 Seconds West a distance of 273.34 feet to a point; thence 13) North 06 Degrees 58 Minutes 38 Seconds West a distance of 192.10 feet to a point; thence 14) North 10 Degrees 30 Minutes 18 Seconds West a distance of 25.45 feet to a point; thence along a new line North 20 Degrees 20 Minutes 31 Seconds East a distance of 30.69 feet to the POINT OF BEGINNING and containing 0.463 acres and being a part of a 24.94 acre tract described in Tract II of Volume 352 Page 263 of the Athens County Official Deed Records.

Note: Unless otherwise noted, all set iron pins are 5/8 inch diameter rebar and 30 inches in length and capped with a plastic identification marker inscribed " L.F. SWOYER PS 6765."

The above description was prepared under the supervision of Leonard F. Swoyer Registered Professional Land Surveyor No. 6765 and based on a survey performed by Southeastern Land Surveys dated July 6, 2004.

Subject to all easements and right of ways of record.

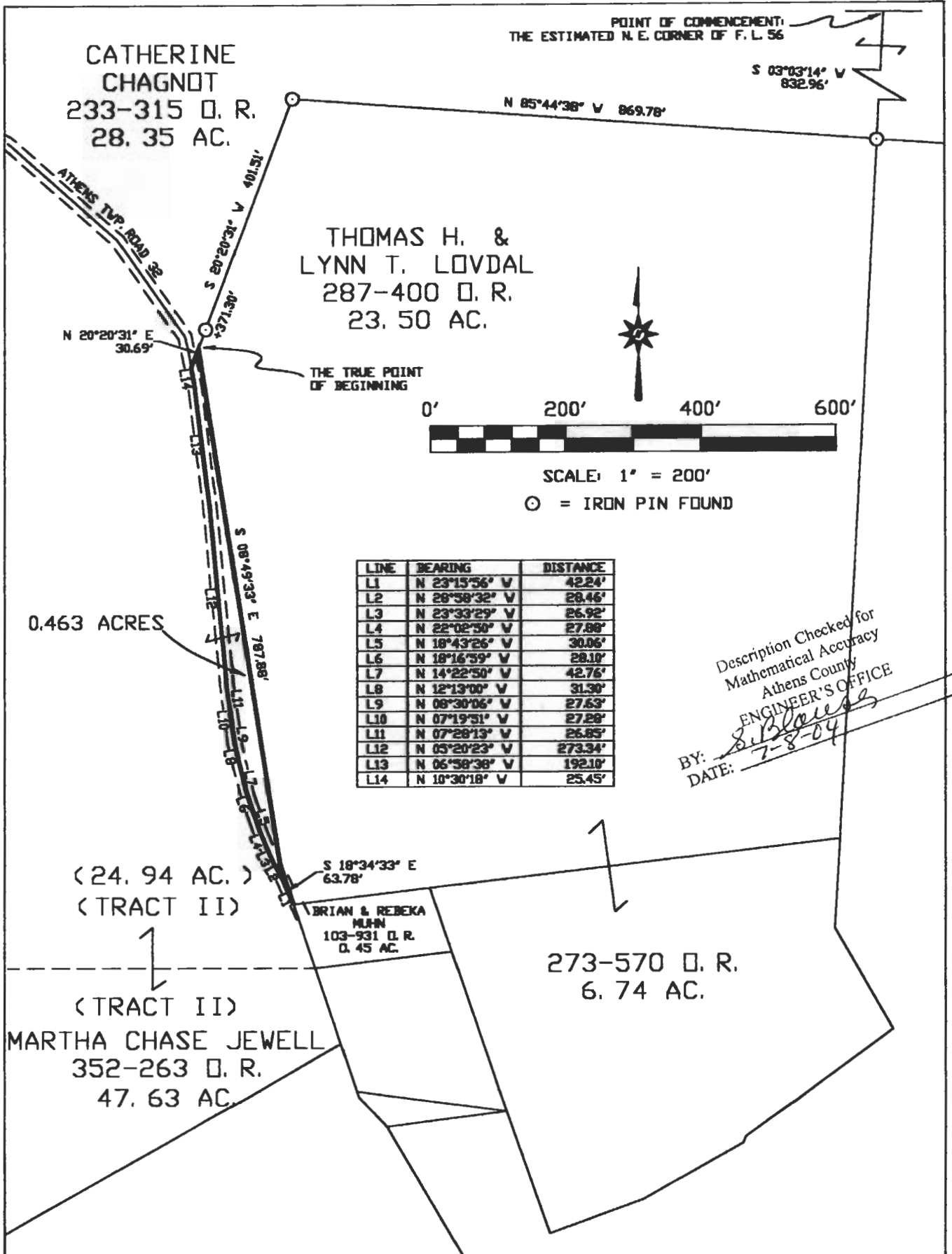
Description Checked for  
Mathematical Accuracy  
Athens County  
ENGINEER'S OFFICE  
BY: S. Blawie  
DATE: 7-8-04



# SOUTHEASTERN LAND SURVEYS

LEONARD F. SWOYER  
REGISTERED PROFESSIONAL LAND SURVEYOR

3428 PLEASANT HILL ROAD  
ATHENS, OHIO 45701  
740/893-8701



Description Checked for  
Mathematical Accuracy  
Athens County  
ENGINEER'S OFFICE  
BY: *[Signature]*  
DATE: 7-8-04

Plat of SURVEY OF A 0.463 AC. TRACT Scale: 1" = 200'  
 Surveyed for: MR. TOM LOVDAL Date: 07-06-04  
 Subdivision FARM LOT 56  
 Township ATHENS Section 14 Town 9 Range 14  
 Corporation ATHENS CITY County ATHENS Ohio  
 Job No. 06039904  
*[Signature]*  
 Leonard F. Swoyer Jr. Reg. P.L.S. No. 6765



ATH #14