

**BRANNER SURVEYING
12500 N. PEACH RIDGE ROAD
ATHENS, OHIO 45701**

Situated in Lease Lot 68, Section 18, T.9, R.14, Athens Township, Athens County, Ohio and being more particularly described as follows;

Beginning at an iron pin found at the South-west corner of a 5.98 acre tract (58-892) said pin bears, South 84 degrees 03 minutes 20 seconds West, 2515.97 feet (calc from deeds) from the South-east corner of L.L. 68;

Thence, North 84 degrees 03 minutes 20 seconds West, 299.16 feet to a point in the Hocking River , passing an iron pipe found at 127.52 feet;

Thence, along the said river:

North 15 degrees 32 minutes 09 seconds West, 220.85 feet;

North 02 degrees 47 minutes 26 seconds East, 220.91 feet;

North 14 degrees 47 minutes 25 seconds East, 328.96 feet ;

Thence, leaving said river South 72 degrees 45 minutes East, 431.79 feet to an iron pin found at base of a stone, passing an iron pin set at 109.12 feet ;

Thence, North 75 degrees 00 minutes East, 263.73 feet to an iron pin found at base of a stone;

Thence, North 33 degrees 59 minutes 50 seconds East, 224.68 feet to an iron pin found;

Thence, North 73 degrees 41 minutes 27 seconds East, 82.39 feet to an iron pin set in the West right of way line of Township Road 1255;

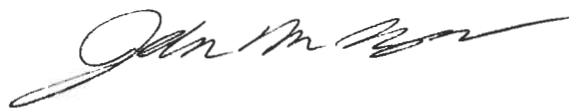
Thence, along said right of way, South 24 degrees 51 minutes 10 seconds East, 304.18 feet;

Thence, South 31 degrees 29 minutes 34 seconds East, 52.71 feet to an iron pin set;

Thence, leaving the right of way and along the west line of the aforementioned 5.98 acre tract, South 51 degrees 23 minutes 14 seconds West, 979.32 feet to the point of beginning and containing 13.212 acres.

Subject to all easements and rights of way of record

The above described tract is based on a field survey completed October 2003 by John M. Branner P.S. 6805



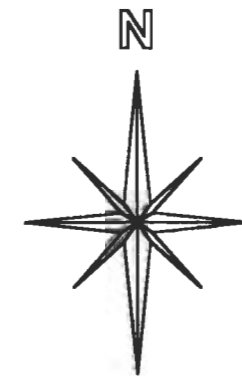
Description checked for
Mathematical Accuracy
ATHENS COUNTY
ENGINEERS OFFICE
BY: S. Blausen
DATE: 10-21-03



#7747/8

Line	Bearing	Distance
1	N 73°41'27"E	82.39'
2	S 31°29'34"E	52.71'

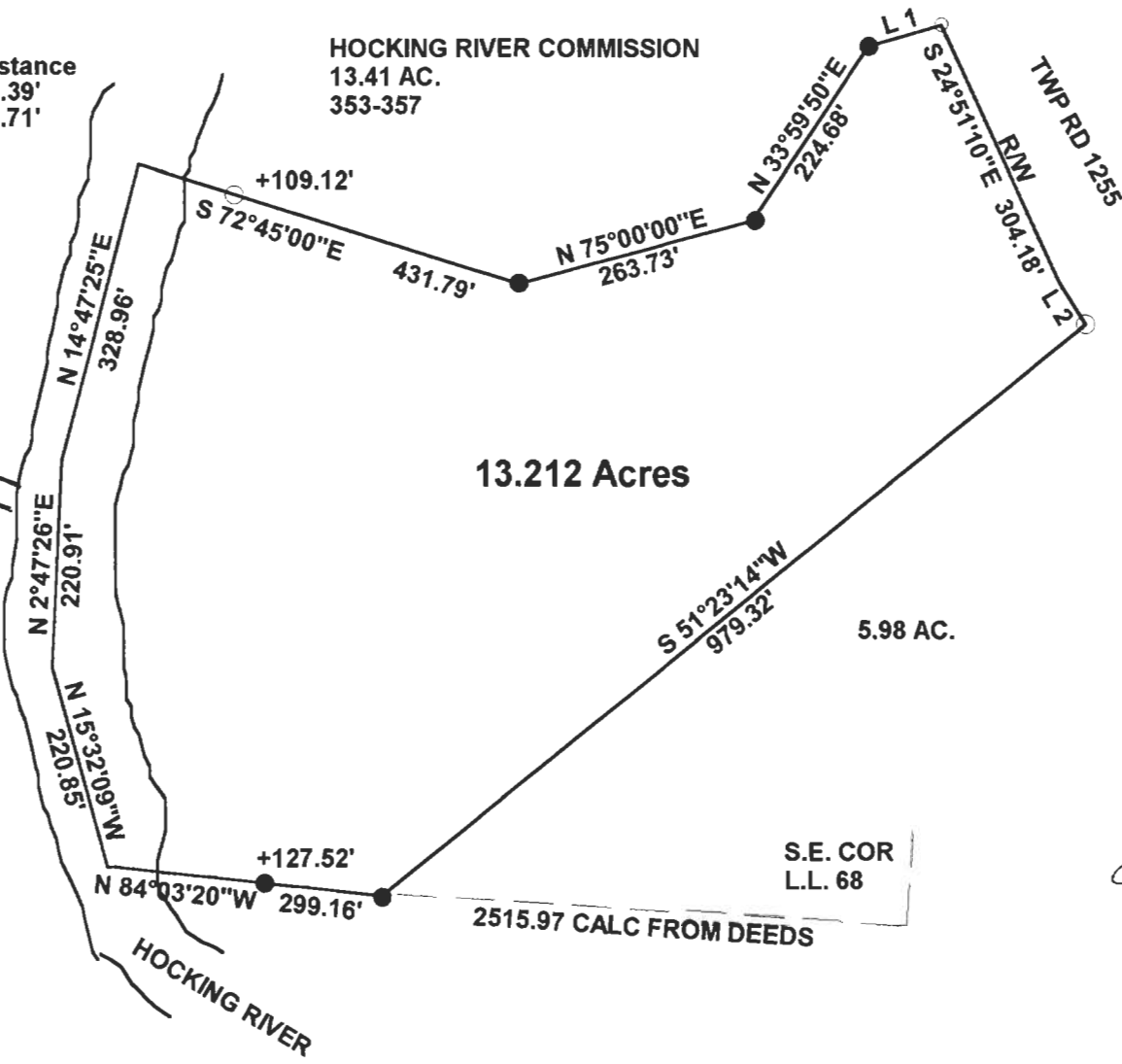
HOCKING RIVER COMMISSION
13.41 AC.
353-357



SCALE 1 INCH = 100 FEET
○ = IRON PIN SET
● = IRON PIN FD.
ASSUMED BEARINGS
TO BE USED TO DENOTE
INTERIOR ANGLE ONLY

Description checked for
Mathematical Accuracy
ATHENS COUNTY
ENGINEER'S OFFICE
BY: *S. Branner*
DATE: *10-21-03*

GAMERTSFELDER TRUST



13.212 Acres

5.98 AC.

SURVEY OF A 13.212 ACRE TRACT
IN L.L. 68, SECTION 18, T.9, R.14,
ATHENS TOWNSHIP
ATHENS COUNTY, OHIO
SURVEYED OCT. 2003



BY: *John M. Branner*
JOHN M. BRANNER P.S. 6805
12500 N. PEACH RIDGE ROAD
ATHENS, OHIO 45701
(740) 592-5778

S.E. COR
L.L. 68

2515.97 CALC FROM DEEDS