

BRANNER SURVEYING
12500 N. PEACH RIDGE ROAD
ATHENS, OHIO 614-592-5778

Situated in Section 18, in L.L. 71, ~~72~~, and 112 and being more particularly described as follows:

Beginning at an iron pin at the South-east corner of the Nelsonville TV Cable Inc. tract (Vol. 57, Page 770), said pin bears NORTH 600' AND EAST 300' FROM S.W. COR. L.L. 71,

thence, along the West-line of the Columbus Southern Power Company Tract, South 12 degrees 47 minutes 22 seconds West, a distance of 129.00 feet to an iron pin set;

thence, leaving said tract, North 77 degrees 12 minutes 38 seconds West, a distance of 134.00 feet to an iron pin set;

thence South 12 degrees 47 minutes 22 seconds West, a distance of 30.00 feet to a railroad spike set in Jackson Drive;

thence, along Jackson Drive, South 53 degrees 47 minutes 02 seconds East, a distance of 50.31 feet to a railroad spike set;

thence South 77 degrees 12 minutes 38 seconds East, a distance of 87.84 feet to an iron pin set in the West-line of the Columbus Southern Power Company Tract;

thence, along said line, South 12 degrees 47 minutes 28 seconds West, a distance of 167.04 feet to an iron pin found;

thence, leaving said line, North 72 degrees 31 minutes 44 seconds West, a distance of 372.51 feet to an iron pin set;

thence North 11 degrees 44 minutes 38 seconds East, a distance of 174.17 feet to a point in Jackson Drive, passing an iron pin found at 154.17 feet;

thence, along said drive, North 63 degrees 59 minutes 45 seconds West, a distance of 150.65 feet;

thence North 32 degrees 10 minutes 30 seconds West, a distance of 66.79 feet to a point in Johnson Road;

thence, along said road, North 28 degrees 22 minutes 00 seconds East, a distance of 20.37 feet;

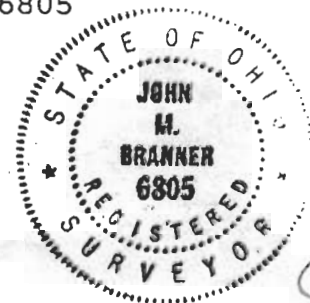
thence North 4 degrees 43 minutes 33 seconds West, a distance of 90.00 feet;

thence, leaving said road and along the South-line of the Nelsonville TV Cable Inc. Tract, South 72 degrees 47 minutes 09 seconds East, a distance of 591.69 feet (passing an iron pin set at 40.00 feet and an iron pin found at 247.71 feet) to the POINT OF BEGINNING; said described tract containing 3.503 acres.

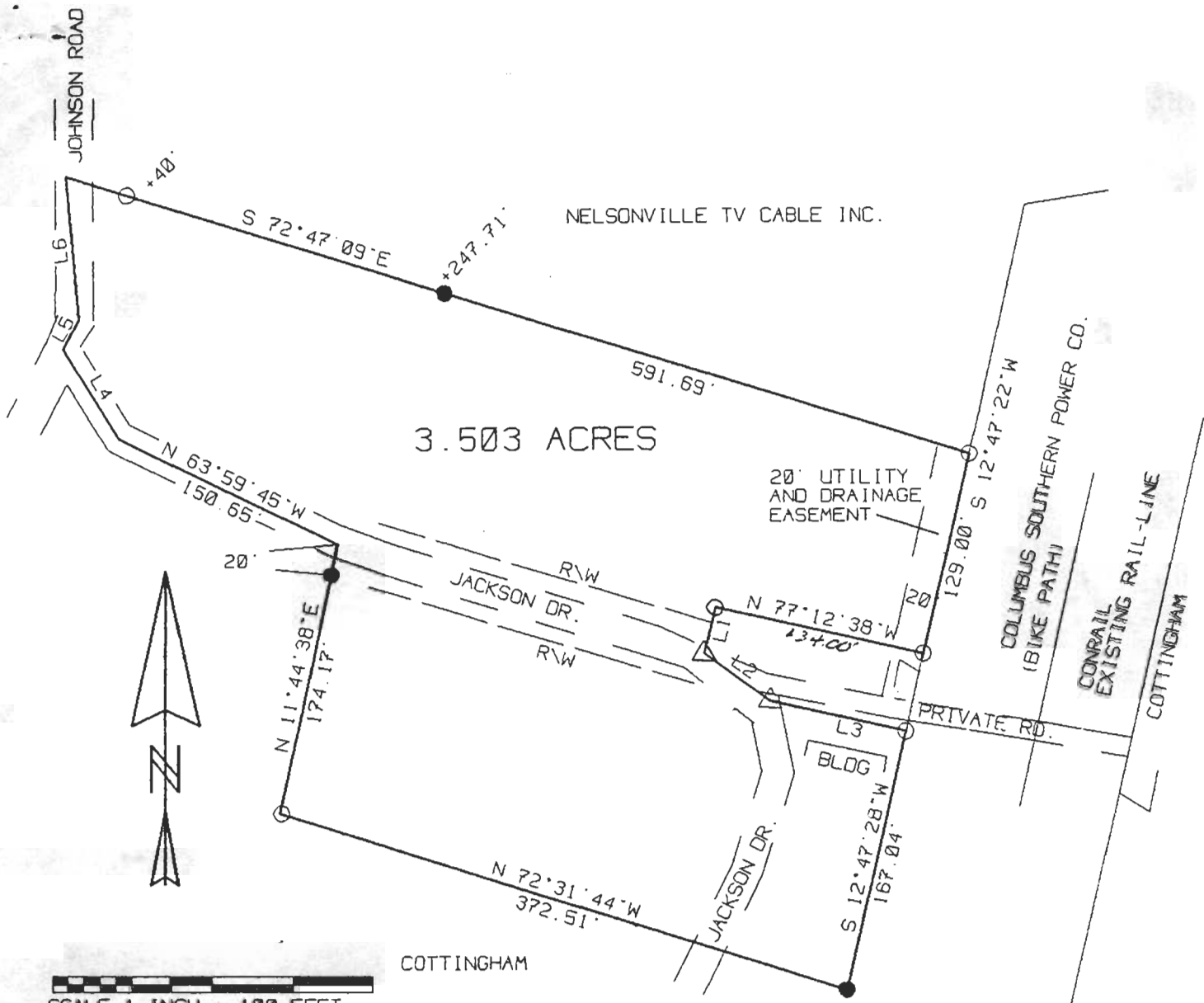
Subject to all easements and rights of way of record.


John M. Branner P.S. 6805

Description checked for
Mathematical Accuracy
ATHENS COUNTY
ENGINEER'S OFFICE
BY: S. Blausch
DATE: 9-8-97



45
ATH # 18

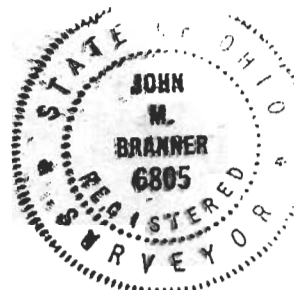


LINE	BEARING	DISTANCE
L 1	S 12° 47' 22" W	30.00'
L 2	S 53° 47' 02" E	50.30'
L 3	S 77° 12' 38" E	87.84'
L 4	N 32° 10' 30" W	66.79'
L 5	N 28° 22' 00" E	20.37'
L 6	N 04° 43' 33" W	90.00'

SURVEY OF A 3.503 ACRE TRACT
 IN SECTION 18. IN L.L. 71.72.112
 T.9. R.14. ATHENS TWP. ATHENS CO..O.
 SURVEYED SEPTEMBER 1997

John M. Branner
 JOHN M. BRANNER P.S. 6805
 12500 N. PEACHRIDGE RD
 ATHENS. OHIO 614-592-5778

Description checked for
 Mathematical Accuracy
 ATHENS COUNTY
 ENGINEER'S OFFICE
 BY: *S. Blaup*
 DATE: *9-8-97*



46