

**BRANNER SURVEYING
12500 N. PEACH RIDGE ROAD
ATHENS, OHIO 45701**

DESCRIPTION OF A 4.301 ACRE TRACT

Situated in L.L. 81, Section 19, T.9, R.14, Athens Township, Athens County, Ohio and being more particularly described as follows:

Beginning at a rail road spike in Ervin Road and being the South-east corner of a 1.082 acre tract and bears South 1173.00 feet and West, 1024.34 feet from the North-east corner of L.L. 81,

Thence, leaving said road and along a fence-line South 17 degrees 16 minutes 50 seconds West, 134.74 feet to a fence post;

Thence, North 88 degrees 36 minutes 27 seconds West, 54.80 feet to a point in Margaret Creek;

Thence, along said creek North 13 degrees 27 minutes 23 seconds West, 334.46 feet to a point;

Thence, North 20 degrees 53 minutes 47 seconds West, 316.80 feet to a point;

Thence, leaving said creek North 50 degrees 44 minutes 35 seconds East, 337.62 feet to an iron pin set, passing existing pins at 72.36 feet and 109.07 feet;

Thence, South 39 degrees 12 minutes 21 seconds East, 454.80 feet to an iron pin set;

Thence, South 66 degrees 51 minutes 57 seconds West, 193.53 feet to an existing iron pin at the North-east corner of a 1.082 acre tract;

Thence, with the North-line of said 1.082 acre tract, South 89 degrees 18 minutes 45 seconds West, 132.05 feet, passing an existing iron pin at 113.26 feet, to a point in Ervin Road;

Thence, along said road, South 06 degrees 19 minutes 17 seconds East, 59.10 feet to a point;

Thence, South 01 degrees 47 minutes 46 seconds West, 102.37 feet to a point;

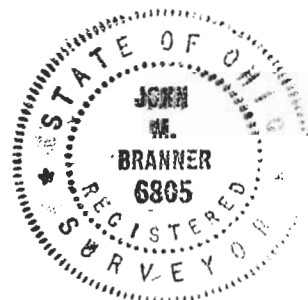
Thence, South 06 degrees 15 minutes 13 seconds East, 31.82 feet to a point;

Thence, South 21 degrees 57 minutes 46 seconds East, 43.38 feet to a point;

Thence, South 28 degrees 01 minutes 56 seconds East, 50.53 feet to the point of beginning and containing 4.301 acres.

Subject to all easements and rights of way of record

The above description is based on a field survey by John M. Branner P.S. 6805



Description checked for
Mathematical Accuracy
ATHENS COUNTY
ENGINEER'S OFFICE
BY: S. Blouse
DATE: 10-12-00

**BRANNER SURVEYING
12500 N. PEACH RIDGE ROAD
ATHENS, OHIO 45701**

DESCRIPTION OF A 4.491 ACRE TRACT

Situated in L.L. 81, Section 19, T.9, R.14, Athens Township, Athens County, Ohio and being more particularly described as follows:

Commencing at a railroad spike in Ervin Road at the South-west corner of a 1.082 acre tract, said spike bears South, 1173.00 feet and West, 1024.34 feet from the north-east corner of L.L. 81, thence, leaving said road and along the lines of said tract, North 77 degrees 25 minutes 40 seconds East, 199.15 feet to an iron pin; thence, North 24 degrees 49 minutes 27 seconds West, 259.84 feet to an existing iron pin at the north-east corner of said tract; thence, North 66 degrees 51 minutes 57 seconds East, 193.53 feet to an iron pin set and being the point of beginning for the tract of land herein described

Thence, North 39 degrees 12 minutes 21 seconds West, 454.80 feet to an iron pin set in then Grantor's west-line;

Thence, with said line North 50 degrees 44 minutes 35 seconds East, 524.39 feet to an existing iron pin at the Southwest corner of a 1.28 acre tract;

Thence, along the South-line of said tract, South 88 degrees 41 minutes 08 seconds East, 178.56 feet to an existing iron pin;

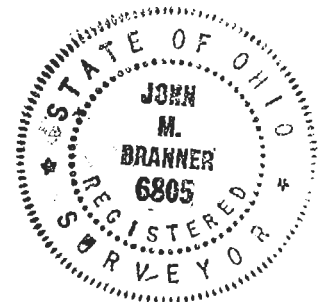
Thence, with the lines of an 8.70 acre tract the following 4 courses:

South 01 degrees 18 minutes 52 seconds West, 370.37 feet to an existing iron pin;
South 76 Degrees 36 minutes 38 seconds West, 397.02 feet to a point;
South 42 degrees 30 minutes 55 seconds East, 253.13 feet to a point;
South 66 degrees 51 minutes 57 seconds West, 79.83 feet to the point of beginning and containing 4.491 acres

All iron pins set are 5/8" by 30 " rebar.

Subject to all easements and rights of way of record.

The above description is based on a survey by John M. Branner P.S. 6805



Description checked for
Mathematical Accuracy
ATHENS COUNTY
ENGINEER'S OFFICE
BY: *S. Blausen*
DATE: *10-12-00*

FORREST R. ERVIN
319-449
1.28 ACRES

Line	Bearing	Distance
12	S 6°19'17"E	59.10'
13	S 6°15'13"E	31.82'
14	S 21°57'46"E	43.38'
15	S 28°01'56"E	50.53'
16	N 88°36'27"W	54.80'

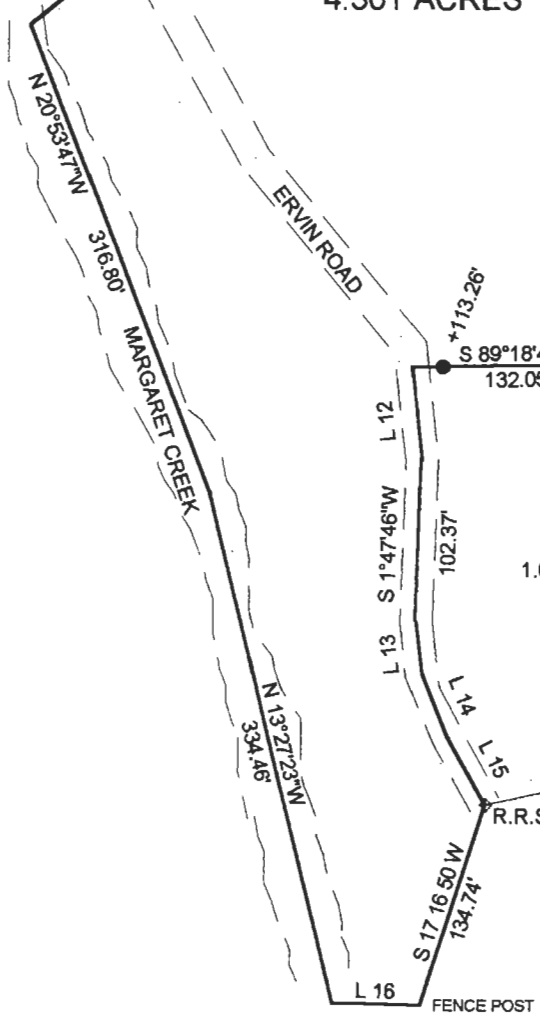
RICHARD C. AND MONA BOLIN
289-382
7.47 ACRES

4.491 ACRES

NOTE: THIS TRACT TO BE CONTINUOUS AND CONTIGUOUS WITH THE ADJOINING 8.70 ACRE TRACT

MARK AND CAROLYN R. ERVIN
8.70 ACRES
222-196 O.R.

4.301 ACRES



Description checked for
Mathematical Accuracy
ATHENS COUNTY
ENGINEER'S OFFICE
S. Blouse
10-12-00

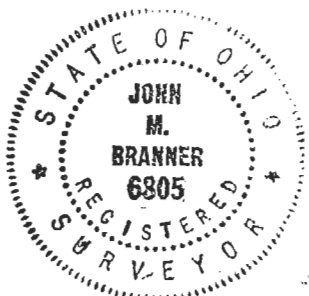
SCALE 1 INCH = 120 FEET

- EXISTING IRON PIN
- IRON PIN SET

R.R.S BEARS SOUTH 1173.00 FEET AND WEST- 1024.34 FEET FROM THE N.E. CORNER OF L.L. 81

SURVEY OF A 4.301 ACRE TRACT AND A 4.491 ACRE TRACT
IN L.L. 81. SECTION 19 , T.9 , R.14 ,ATHENS TOWNSHIP
ATHENS COUNTY, OHIO
SURVEYED OCTOBER 2000

BY: *John M. Branner*
JOHN M. BRANNER P.S. 6805
12500 N. PEACH RIDGE ROAD
ATHENS, OHIO 45701
(740) 592-5778



000036