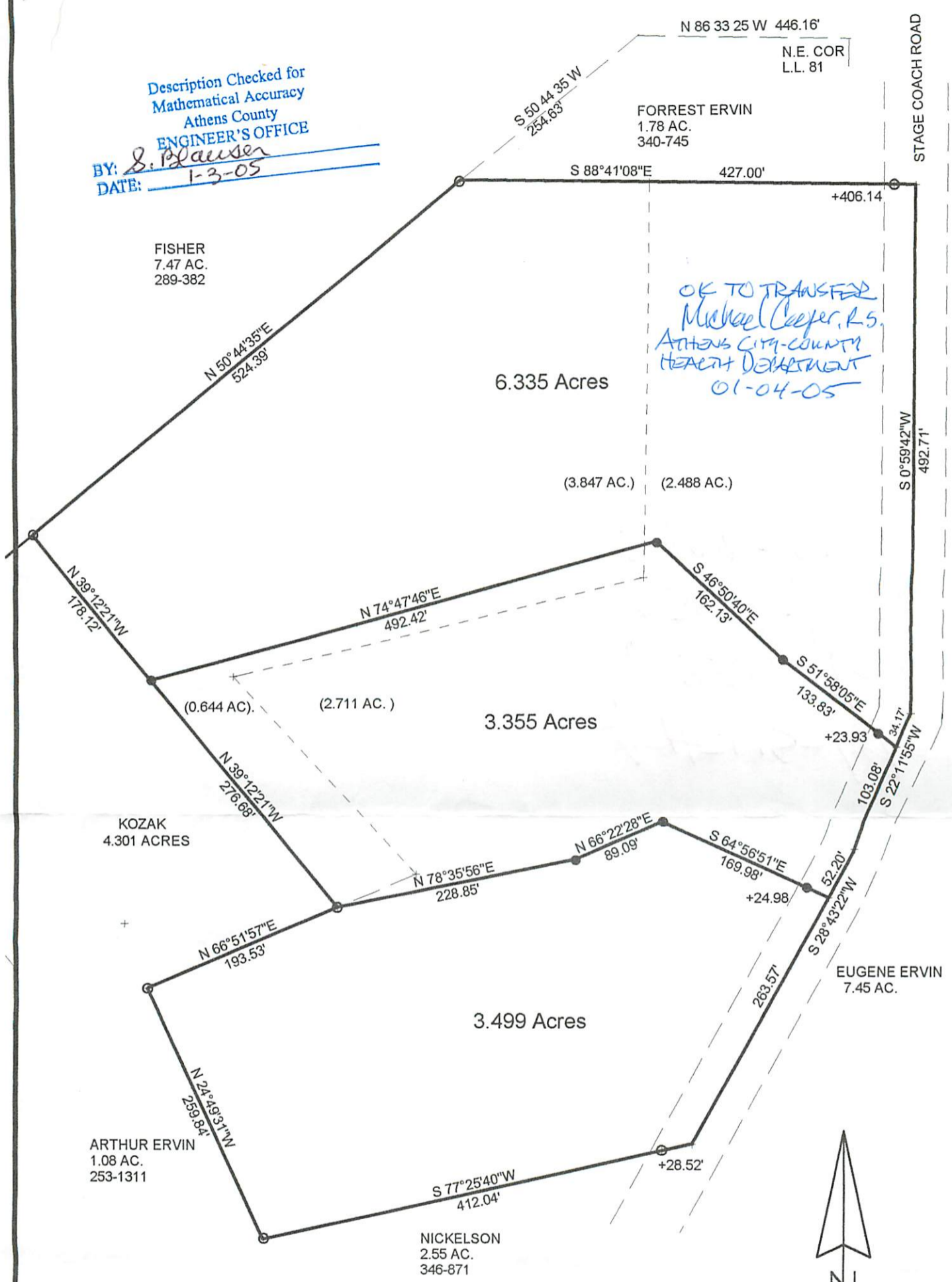
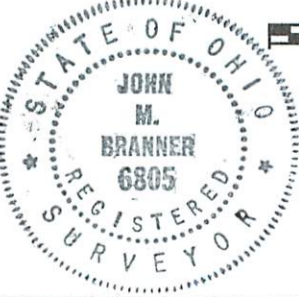


Description Checked for  
Mathematical Accuracy  
Athens County  
ENGINEER'S OFFICE  
BY: S. Blawie  
DATE: 1-3-05

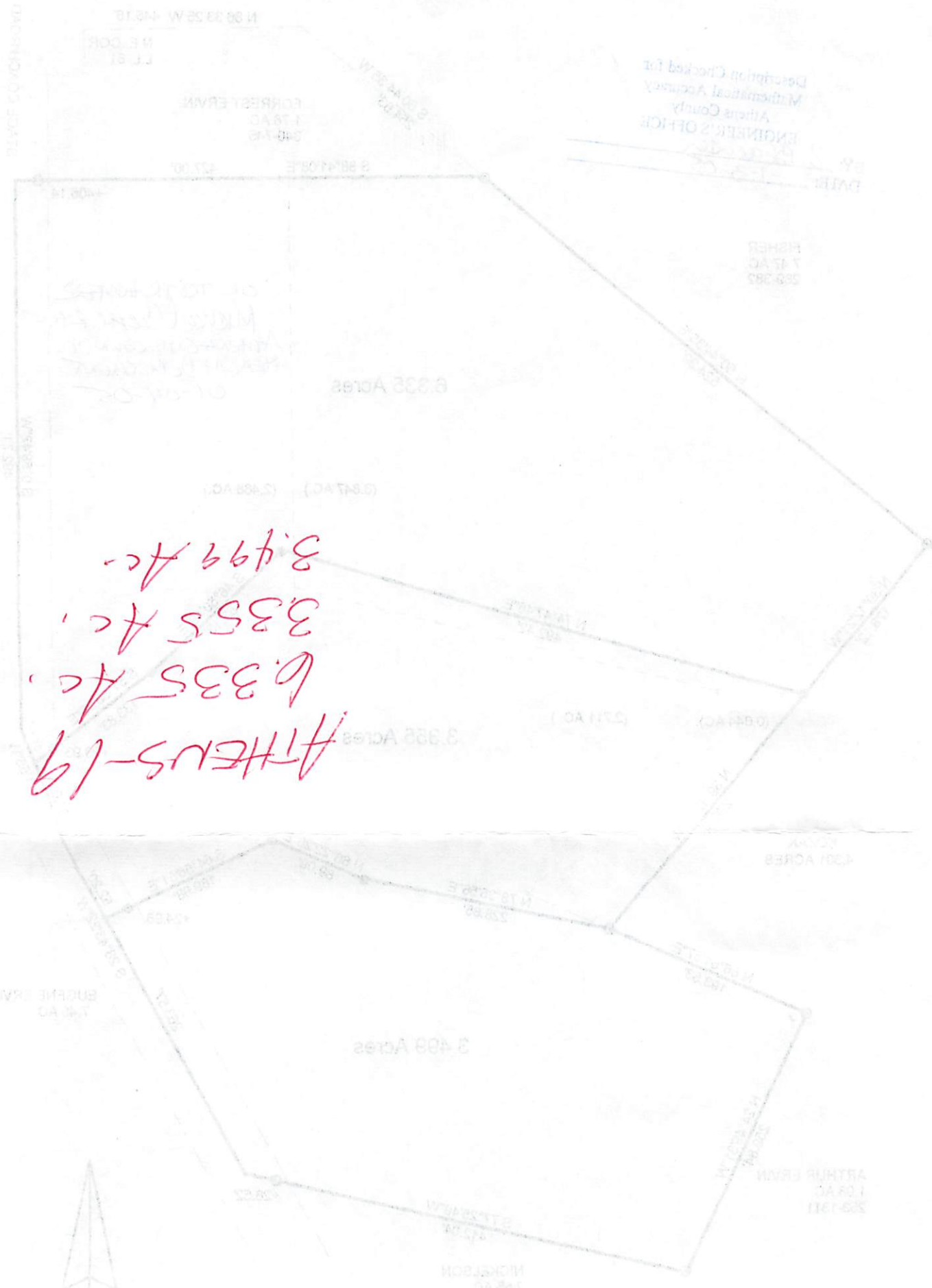


**SURVEY OF A 6.335 ACRE TRACT, 3.355 ACRE TRACT  
AND A 3.499 ACRE TRACT OUT OF A 8.70 ACRE TRACT  
(222-696 O.R.) AND A 4.491 ACRE TRACT ( 304-1231 O.R.)  
IN L.L. 81, SECTION 19 , T.9 , R.14 ,ATHENS TOWNSHIP  
ATHENS COUNTY, OHIO  
SURVEYED DECEMBER 2004**

BY: John M. Branner  
**JOHN M. BRANNER P.S. 6805  
12500 N. PEACH RIDGE ROAD  
ATHENS, OHIO 45701  
(740) 592-5778**



SCALE 1 INCH = 120 FEET  
● = IRON PIN SET  
○ = EXISTING IRON PIN BEARINGS ARE ASSUMED AND ARE TO BE USED TO DENOTE INTERIOR ANGLES ONLY



Athens-19  
 6.335 Ac.  
 3.355 Ac.  
 3.499 Ac.

SURVEY OF A 8.335 ACRE TRACT, 3.355 ACRE TRACT  
 AND A 3.499 ACRE TRACT OUT OF A 8.70 ACRE TRACT  
 (222.692 O.R.) AND A 4.981 ACRE TRACT (304-1231 O.R.)  
 IN T.81, S.14, R.14, ATHENS TOWNSHIP  
 ATHENS COUNTY, OHIO

SURVEYED, DECEMBER 2004

BY  
 JOHN M. BRANNER P.S. 5205  
 12808 N. BEACH RIDGE ROAD  
 ATHENS, OHIO 45701  
 (740) 592-5778



DENOTE INTERIOR ANGLES ONLY  
 AND ARE TO BE USED TO  
 BEARINGS ARE ASSUMED  
 EXISTING IRON PIN  
 IRON PIN SET

SCALE 1 INCH = 120 FEET