



SOUTHEASTERN LAND SURVEYS

LEONARD F. SWOYER
REGISTERED PROFESSIONAL LAND SURVEYOR

3428 Pleasant Hill Road
Athens, Ohio 45701
614/593-8701

TRACT A

Situated in Farm Lots 13 and 14, Section 2, Athens Township, Town 9, Range 14, Athens County, Ohio and described as follows:

Commencing at a found iron pin at the grantor's southwest corner and the southwest corner of Farm Lot 13; thence on an assumed bearing along the grantor's west line and the west line of said Farm Lot 13 North 4 degrees 54 minutes 24 seconds East, passing a set iron pin at 387.84 feet, for a total distance of 666.18 feet to a set iron pin on the east line of a 16.8 acre tract described in Volume 279 Page 1101 of the Athens County Official Deed Records, THE TRUE POINT OF BEGINNING; thence North 4 degrees 54 minutes 24 seconds East along the grantor's west line and west line of Farm Lot 13 and Farm Lot 14 and the east line of said 16.8 acre tract and the east line of a 6 acre tract described in Volume 315 Page 379 of the Athens County Deed Records, passing a set iron pin at 378.42 feet, a found iron pin at 894.05 feet, and a set iron pin at 1063.32 feet, for a total distance of 1202.71 feet to a point in Athens County Road 98; thence along said road the following six bearings and distances: 1) South 8 degrees 30 minutes 35 seconds East, a distance of 107.65 feet to a point; thence 2) South 17 degrees 24 minutes 43 seconds East, a distance of 100.00 feet to a point; thence 3) South 44 degrees 36 minutes 43 seconds East, a distance of 99.88 feet to a point; thence 4) South 55 degrees 18 minutes 28 seconds East, a distance of 100.25 feet to a point; thence 5) South 60 degrees 36 minutes 43 seconds East, a distance of 100.00 feet to a point; thence 6) South 73 degrees 33 minutes 43 seconds East, a distance of 19.44 feet to a point; thence leaving said road and along a new property line the following six bearings and distances: 1) South 24 degrees 37 minutes 00 seconds West, passing a set iron pin at 19.60 feet, for a total distance of 113.18 feet to a set iron pin; thence 2) South 11 degrees 53 minutes 01 second West, a distance of 355.77 feet to a set iron pin; thence 3) South 26 degrees 09 minutes 42 seconds West, a distance of 104.26 feet to a set iron pin; thence 4) South 31 degrees 45 minutes 14 seconds West, a distance of 210.46 feet to a set iron pin; thence 5) South 23 degrees 15 minutes 27 seconds West, a distance of 108.90 feet to a set iron pin; thence 6) North 83 degrees 29 minutes 26 seconds West, a distance of 87.51 feet to the POINT OF BEGINNING and containing 5.285 acres, and being a part of a 29.85 acre tract (by deed) described in Volume 289 Page 271 of the Athens County Deed Records. There are 4.796 acres in Farm Lot 13 and 0.489 acres in Farm Lot 14.

Note: Unless otherwise noted, all set iron pins are 5/8 inch diameter rebar and 30 inches in length and capped with a plastic identification marker inscribed L.F. Swoyer R.L.S. 6765. The above description was prepared under the supervision of Leonard F. Swoyer Registered Professional Land Surveyor No. 6765 and based on a survey performed by Southeastern Land Surveys dated February 17, 1999. Subject to all easements and right of ways of record.

Description checked for
Mathematical Accuracy
ATHENS COUNTY
ENGINEER'S OFFICE
BY: K. Cantelary
DATE: 2/24/99

84

Athens #2

PROPERTY

CONSTRUCTION

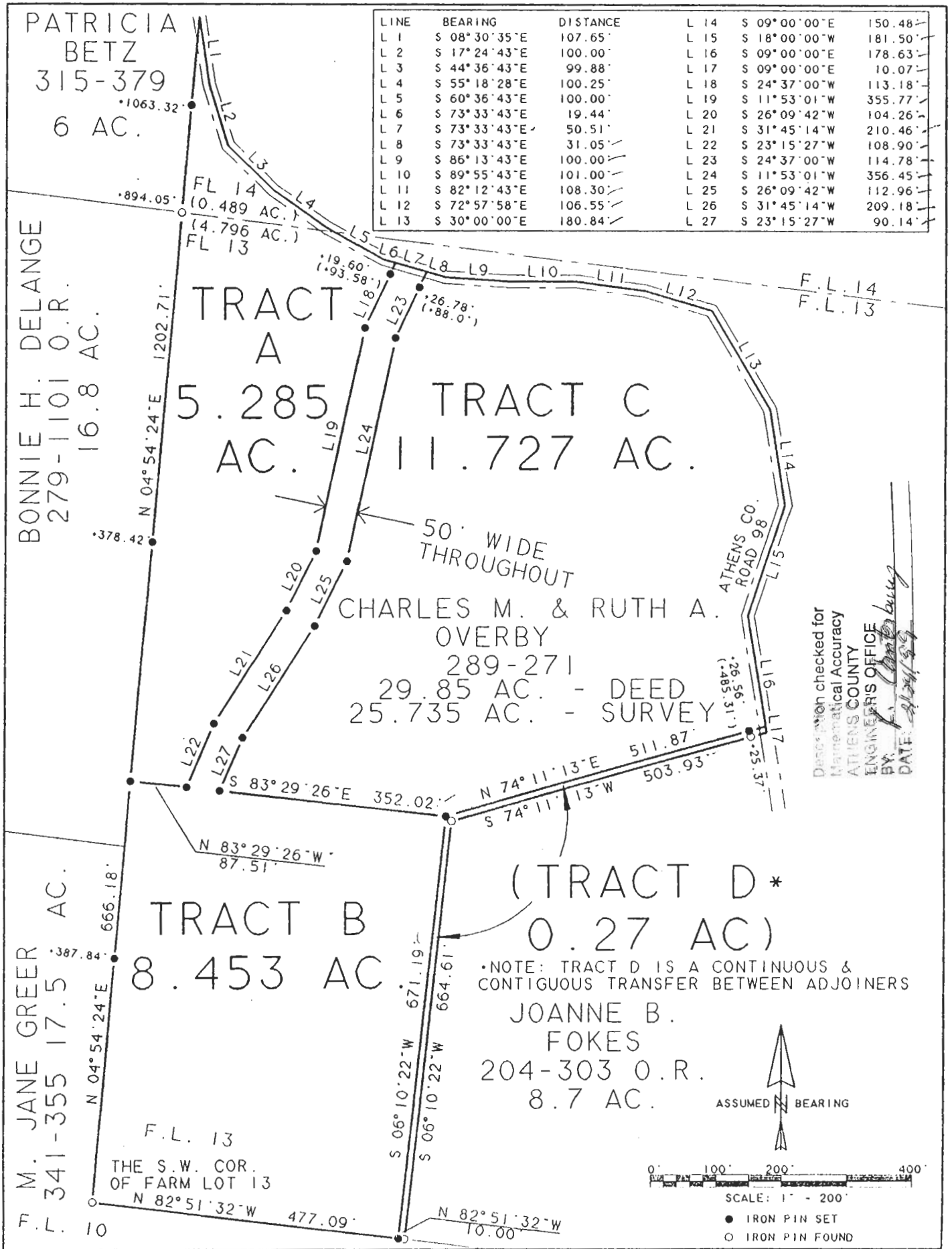
SUBDIVISIONS



SOUTHEASTERN LAND SURVEYS

LEONARD F. SWOYER
REGISTERED PROFESSIONAL LAND SURVEYOR

3428 Pleasant Hill Road
Athens, Ohio 45701
614/593-8701



Plat of Survey of Tracts A-D, inclusive Scale 1" = 200'
 Surveyed for Charles & Ruth Overby Date 2/17/99
 Subdivision Farm Lots 13 & 14
 Township Athens Section 2 Town 9 Range 14
 Corporation --- County Athens State Ohio

Leonard F. Swoyer Jr.
 Leonard F. Swoyer Jr. Reg. Prof. Land Surveyor No. 6765

92