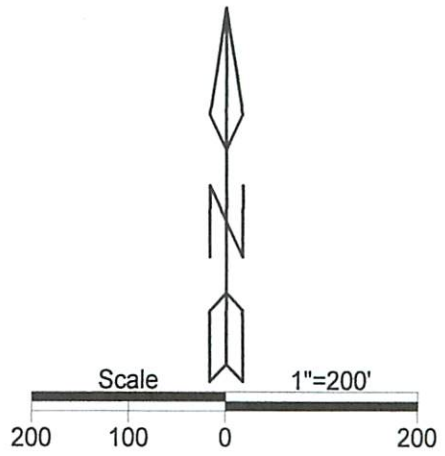
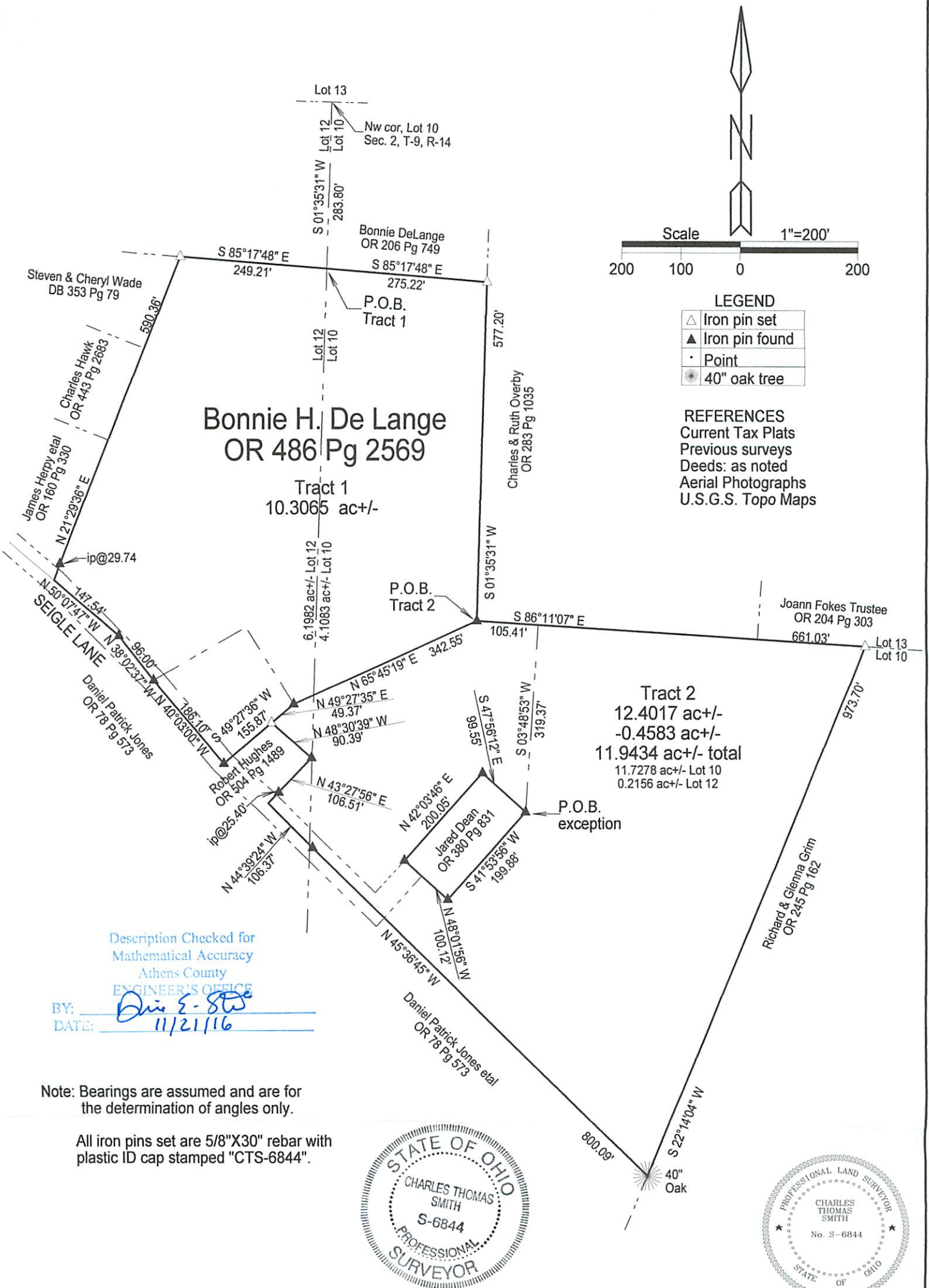






BEING A PART OF FARM LOTS 10 AND 12, SECTION 2, TOWNSHIP-9, RANGE-14, ATHENS TOWNSHIP, ATHENS COUNTY, STATE OF OHIO.



**LEGEND**

△	Iron pin set
▲	Iron pin found
•	Point
★	40" oak tree

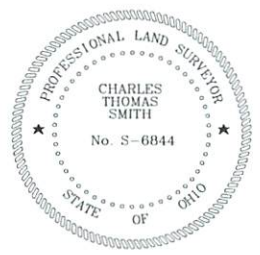
**REFERENCES**  
 Current Tax Plats  
 Previous surveys  
 Deeds: as noted  
 Aerial Photographs  
 U.S.G.S. Topo Maps

Description Checked for  
 Mathematical Accuracy  
 Athens County  
 ENGINEER'S OFFICE

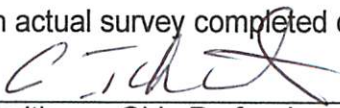
BY: Chris E. Smith  
 DATE: 11/21/16

Note: Bearings are assumed and are for the determination of angles only.

All iron pins set are 5/8"X30" rebar with plastic ID cap stamped "CTS-6844".



Surveyed and platted by  
 C. Thomas Smith  
 Ohio Professional Surveyor No 6844  
 P.O. Box 393  
 Racine, Ohio 45771  
 740-949-2524

Plat prepared from an actual survey completed on the 9th day of April, 2015 by,  
  
 C. Thomas Smith Ohio Professional Surveyor No. 6844