

DESCRIPTION OF 0.098 ACRES

Situated in the State of Ohio, Athens County, Athens Township, Section 24, Town 9, Range 14, being part of Farm Lot 111 and more particularly described as follows:

Beginning at a post at the northeast corner of Lot No. 713, The Plains; thence with the north line of said Lot, north $85^{\circ} 46' 32''$ west a distance of 205.81 feet to an iron pin; thence north $32^{\circ} 33' 55''$ east a distance of 46.88 feet to an iron pin at the southwest corner of a two acre tract as Recorded in Volume 219, Page 63 Athens County Records of Deeds; thence with the south line of said two acre tract, south $73^{\circ} 06' 21''$ east a distance of 188.14 feet to the place of beginning and containing 0.098 acres more or less.

Prepared by: Evans, Mechwart, Hambleton & Tilton, Inc.

George A. Mera
Registered Surveyor #5508

Checked for
Mathematical Accuracy,
ATHENS COUNTY,
ENGINEER'S OFFICE

BY:

Charles M. Mera

DATE:

2-18-82

ATH #
103

EVANS, MECHWART, HAMBLETON, & TILTON, INC.

H.L. JETT, P.E., Pres.
 A.W. MAIER, P.E., V. Pres.
 W.H. MECHWART, P.S., Sec. Treas.

CONSULTING ENGINEERS
 SURVEYORS

Main Office
 170 Mill Street
 Gahanna, Ohio 43230
 Area Code 614-471-5150

Athens Office

Associates:

D.A. HUSSEY, P.E.
 Chief Engineer

8 NORTH COURT STREET • SUITE 506

ATHENS, OHIO 45701

Associates:
 G.A. MARA, P.E. (Manager)
 W.K. STANFORTH, P.E.

E.E. MADDY, P.S.
 Chief Surveyor

Area Code 614-693-7767

F.D. BOOTHE, P.E.
 J.W. CAMPBELL, P.S.
 R.H. DICKHAUS, P.E.
 N.E. KOHMAN, P.E.
 R.H. NORRIS, P.E., P.S.
 T.D. SIBBALDS, P.S.
 S.L. TOLMAN, P.E.

TO WHOM IT MAY CONCERN:

The following is our computer print-out of the mathematical closure of the bearings and distances shown in the attached description(s).

	BEARING	DISTANCE	LATITUDE	DEPARTURE
1	35° 46' 32" W	205.818	15.161	-205.251
2	32° 33' 55" E	45.830	39.530	35.234
3	75° 06' 21" E	133.140	-54.674	130.920

Error of closure; -.034 North and .0032 East

Relative Error of Closure is 1 Part in 32925.

Area = 4245.663 sq. ft. or .0974 acres?

EVANS, MECHWART, HAMBLETON & TILTON, INC.

By George A. Mara

Checked for
 Mathematical Accuracy,
 ATHENS COUNTY,
 ENGINEER'S OFFICE

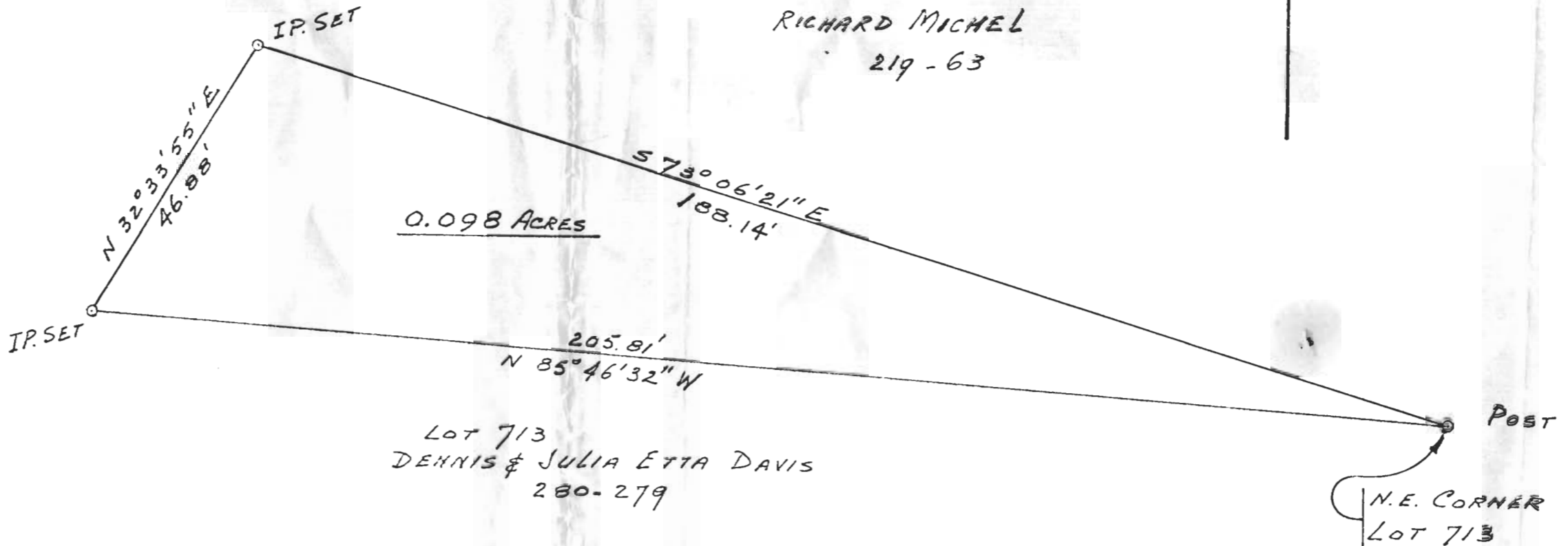
BY: Charles McKinney
 DATE: 2-18-82

Att 24

102

Sec. 24 PTH.

TILT



RICHARD MICHEL
219-63



LOT 713
DENNIS & JULIA ETIA DAVIS
280-279

POST
N.E. CORNER
LOT 713

PLAT OF SURVEY
0.098 ACRES

LOCATED IN SECTION 24, TOWN 9,
RANGE 14, ATHENS TOWNSHIP, ATHENS
COUNTY OHIO
SCALE 1" = 20' February 1979

Description checked for
Mathematical Accuracy
ATHENS COUNTY
ENGINEER'S OFFICE

PREPARED BY
EVANS, MECHWART, HAMBLETON & TILTON, INC.
CONSULTING ENGINEERS AND SURVEYORS
GAHANNA, OHIO
George A. Maus
ATHENS, OHIO
Registered Surveyor #5508

BY: *Charles W. ...*
DATE: 2-18-82

104
A0111A-