

# BRANNER SURVEYING

MEMBER-PROFESSIONAL LAND SURVEYORS OF OHIO

PEACH RIDGE ROAD  
ROUTE 3 BOX 240B  
ATHENS, OHIO 45701

JOHN M. BRANNER  
Registered Land Surveyor

TELEPHONE  
(614) 592-5778

## DESCRIPTION OF A 8.66<sup>0</sup> ACRE TRACT

Situated in the City of Athens, Fraction 34, T.5, R.13, Canaan Township, Athens County, Ohio and being that portion of land as described in Volume 270, Page 323, that is situated North of the center of the Hocking River and South of the South L.A. line of Limited Access U.S. 50 & 33 and being more particularly described as follows:

Beginning at a point where the West-line of aforementioned tract intersects with the South L.A. line of Limited Access U.S. 50 & 33, said point being 125.62 feet Right and radially from Station 863+49.56 of the center-line of the 1969 Ohio Department of Transportation Survey of Limited Access Highway 50 & 33, Section 14.57 in the City of Athens, thence, along Limited Access lines, North 81 Degrees 56 Minutes 39 Seconds East, 52.28 feet to a point; thence, North 73 Degrees 50 Minutes 04 Seconds East, 413.13 feet to a point; thence, North 70 Degrees 43 Minutes 43 Seconds East, 414.64 feet to a point; thence, North 63 Degrees 40 Minutes 02 Seconds East, 300.85 feet to a point in the East-line of aforementioned tract; thence, along said line, South 02 Degrees 21 Minutes 46 Seconds West, 488 feet to the center of the Hocking River; thence, with the Meanderings of said river, North 89 Degrees 42 Minutes 12 Seconds West, 463.32 feet to a point; thence, South 63 Degrees 45 Minutes 54 Seconds West, 430.55 feet to a point; thence, South 78 Degrees 08 Minutes 30 Seconds West, 258.74 feet to a point in the West-line of aforementioned tract; thence, along said line, North 02 Degrees 15 Minutes 27 Seconds East, 336.3 feet to the point of beginning and containing 8.66 acres.

Subject to all easements and rights of way of record.

This description is based on existing documents and not on a field survey.

Description checked for

Mathematical Accuracy

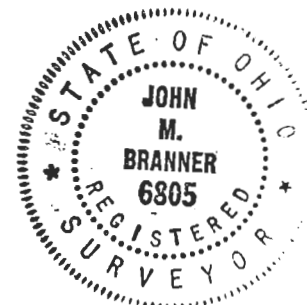
ATHENS COUNTY

ENGINEER'S OFFICE

By: Bob Eichenberg

DATE: 12-31-86

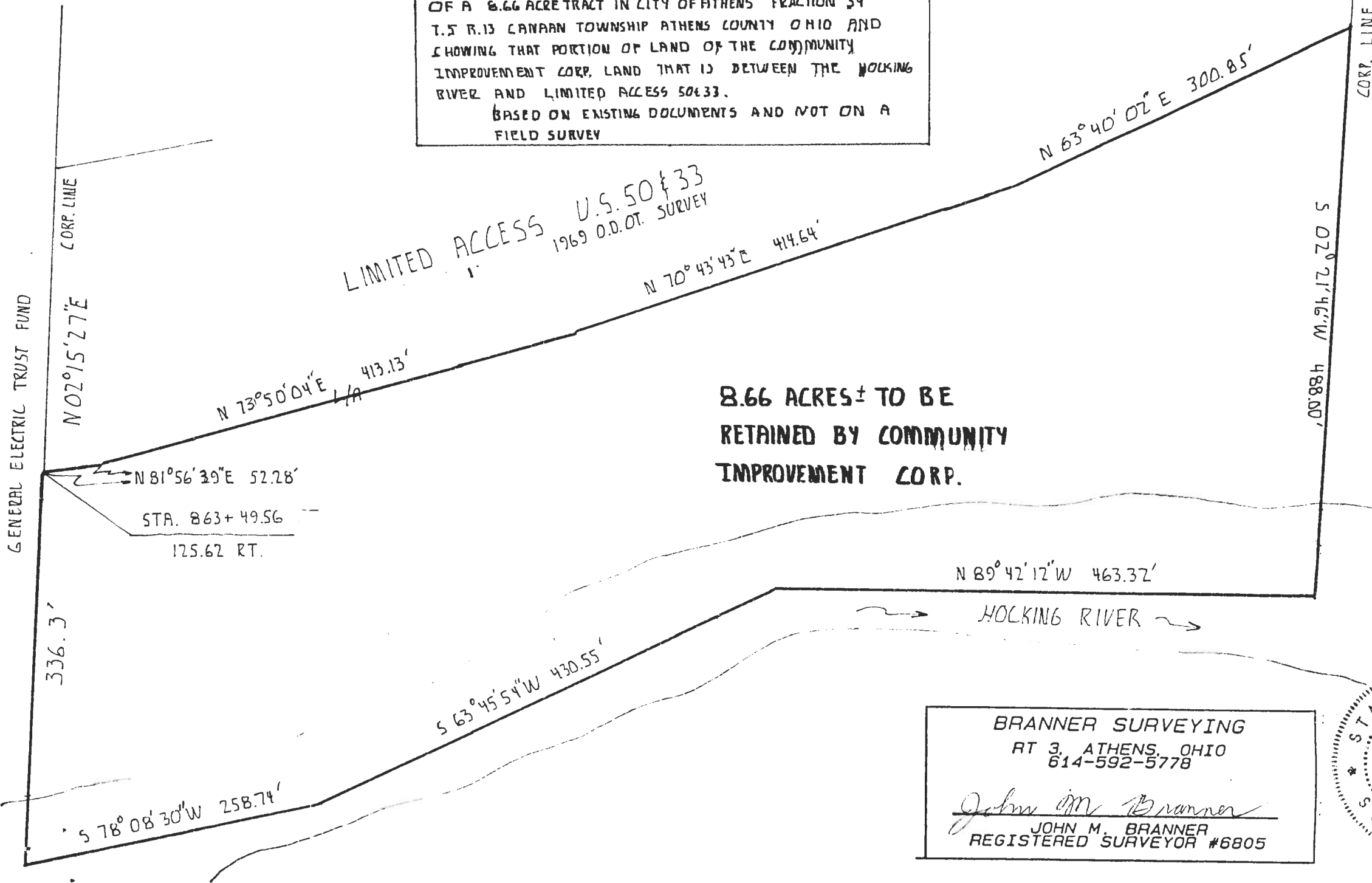
*John M. Branner*  
John M. Branner  
Registered Land Surveyor 6805



*Fraction 34  
T-5  
146*

PLAT OF DESCRIPTION

OF A 8.66 ACRE TRACT IN CITY OF ATHENS FRACTION 34  
T.5 R.13 CANAAN TOWNSHIP ATHENS COUNTY OHIO AND  
SHOWING THAT PORTION OF LAND OF THE COMMUNITY  
IMPROVEMENT CORP. LAND THAT IS BETWEEN THE HOCKING  
RIVER AND LIMITED ACCESS 50133.  
BASED ON EXISTING DOCUMENTS AND NOT ON A  
FIELD SURVEY



LIMITED ACCESS U.S. 50 & 33  
1969 O.D.O.T. SURVEY

8.66 ACRES ± TO BE  
RETAINED BY COMMUNITY  
IMPROVEMENT CORP.



SCALE: 1" = 100'

BRANNER SURVEYING  
RT 3, ATHENS, OHIO  
614-592-5778  
*John M. Branner*  
JOHN M. BRANNER  
REGISTERED SURVEYOR #6805

