

BRANNER SURVEYING

MEMBER-PROFESSIONAL LAND SURVEYORS OF OHIO

12500 PEACH RIDGE ROAD
ATHENS, OHIO 45701
Description checked for
Mathematical Accuracy

JOHN M. BRANNER
Registered Land Surveyor

ATHENS COUNTY
LAND DEPT. OFFICE

TELEPHONE
(614) 592-5778

DESCRIPTION OF A 116.54 ACRE TRACT

31
John M. Branner
DATE: 8/29/00

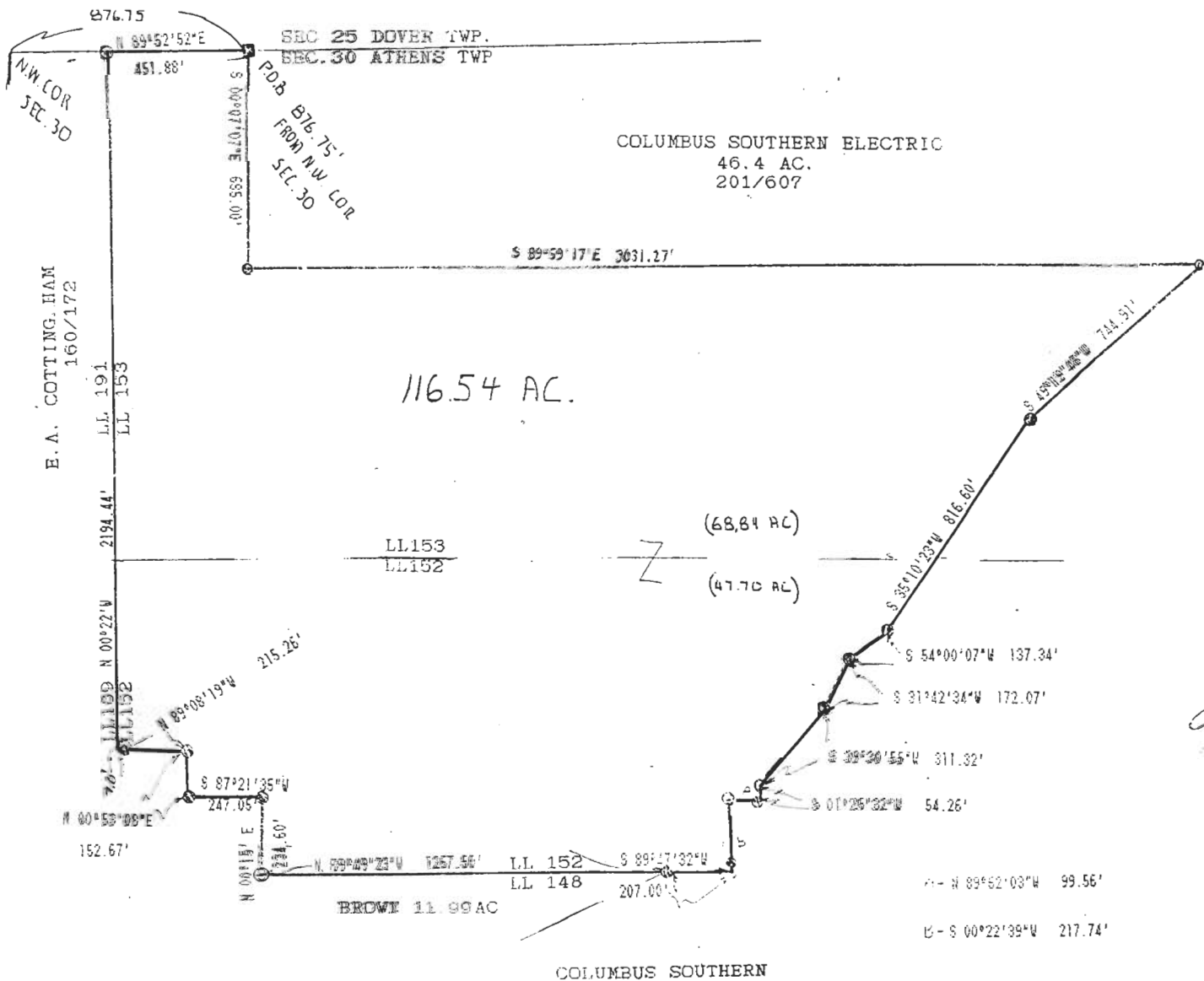
Situated in Lease-lot 152 & 153, Section 30, T.9, R.14, Athens Township, Athens County, Ohio and being more particularly described as follows:

Beginning at a stone found that bears North 89 Degrees 52 Minutes 52 Seconds East, 876.75 feet from the North-west corner of Section 30; thence, South 00 Degrees 07 Minutes 07 Seconds East, 685.00 feet to an iron pin at the South-west corner of a 46.4 acre tract (Vol. 201, Page 607); thence, along the South-line of said tract, South 89 Degrees 59 Minutes 17 Seconds East, 3031.27 feet to an iron pin found at the North-west corner of a 35.51 acre tract (Vol. 374, Pg. 471); thence, along the West-lines of said tract, South 49 Degrees 19 Minutes 48 Seconds West, 744.91 feet to an iron pin found; thence, South 35 Degrees 10 Minutes 23 Seconds West, 316.60 feet to an iron pin found at the North-west corner of a 0.54 acre tract (Vol. 312, Pg. 137); thence, South 54 Degrees 00 Minutes 07 Seconds West, 137.34 feet to an iron pin found at the North-west corner of a 0.50 acre tract (Vol. 312, Page 137); thence, South 31 Degrees 42 Minutes 34 Seconds West, 172.07 feet to an iron pin found at the North-west corner of a 0.70 acre tract, (Vol. 308, Pg. 225); thence, South 39 Degrees 30 Minutes 55 Seconds West, 311.32 feet to an iron pin found at the South-west corner of said tract; thence, South 01 Degrees 25 Minutes 32 Seconds West, 54.26 feet to an iron pin found at the the North-east corner of a 0.46 acre tract, (Vol. 275, Pg. 522); thence, North 89 Degrees 52 Minutes 03 Seconds West, 99.56 feet to an iron pin found at the North-west corner of said tract; thence, South 00 Degrees 22 Minutes 39 Seconds West, 217.74 feet to a point in the North-line of a 25.0 acre tract, (Vol. 202, Pg 301), passing an iron pin found at 200.3 feet; thence, along the North-line of said tract, South 89 Degrees 47 Minutes 32 Seconds West, 207.00 feet to an iron pin found at the North-west corner of said tract; thence, along the North-line of a 11.99 acre tract, (Vol. 331, Pg. 467), North 89 Degrees 49 Minutes 23 Seconds West, 1267.50 feet to an iron pin set in the East-line of a 5.00 acre tract; thence, North 00 Degrees 15 Minutes East, 234.60 feet to an iron pin at the North-east corner of said tract; thence, South 87 Degrees 21 Minutes 35 Seconds West, 247.05 feet to an iron pin found at the North-west corner of said tract; thence, North 00 Degrees 53 Minutes 08 Seconds East, 152.67 feet to an iron pin found at the North-east corner of a 5.00 acre tract (Vol. 370, Page 793); thence, along the North-line of said tract, North 89 Degrees 08 Minutes 19 Seconds West, 215.26 feet to a point, passing an iron pin found at 208.26 feet; thence, along the West-lines of L.L. 152 and L.L. 153, North 00 Degrees 22 Minutes West, 2194.44 feet to an iron pin set in the North-line of Section-30; thence, along said Section, North 89 Degrees 52 Minutes 52 Seconds East, 451.88 feet to the point of beginning and containing 116.54 acres.

Subject to all easements and rights of way of record.

John M. Branner

ATH # 30
4



●=IRON PIN FOUND
 ○=IRON PIN SET
 ■=STONE FOUND
 SCALE: 1"=400'
 ASSUMED BEARINGS

SURVEY OF A 116.54 ACRE TRACT
 IN SECTION 30, LL. 152 AND LL.
 ATHENS TOWNSHIP ATHENS CO. OHIO
 SURVEYED AUGUST 1988

John M. Branner
 JOHN M. BRANNER
 PROFESSIONAL SURVEYOR 6805
 12500 N. PEACH RIDGE RD. ATHENS
 592-5778



5