

DESCRIPTION OF A 122.677 ACRE TRACT

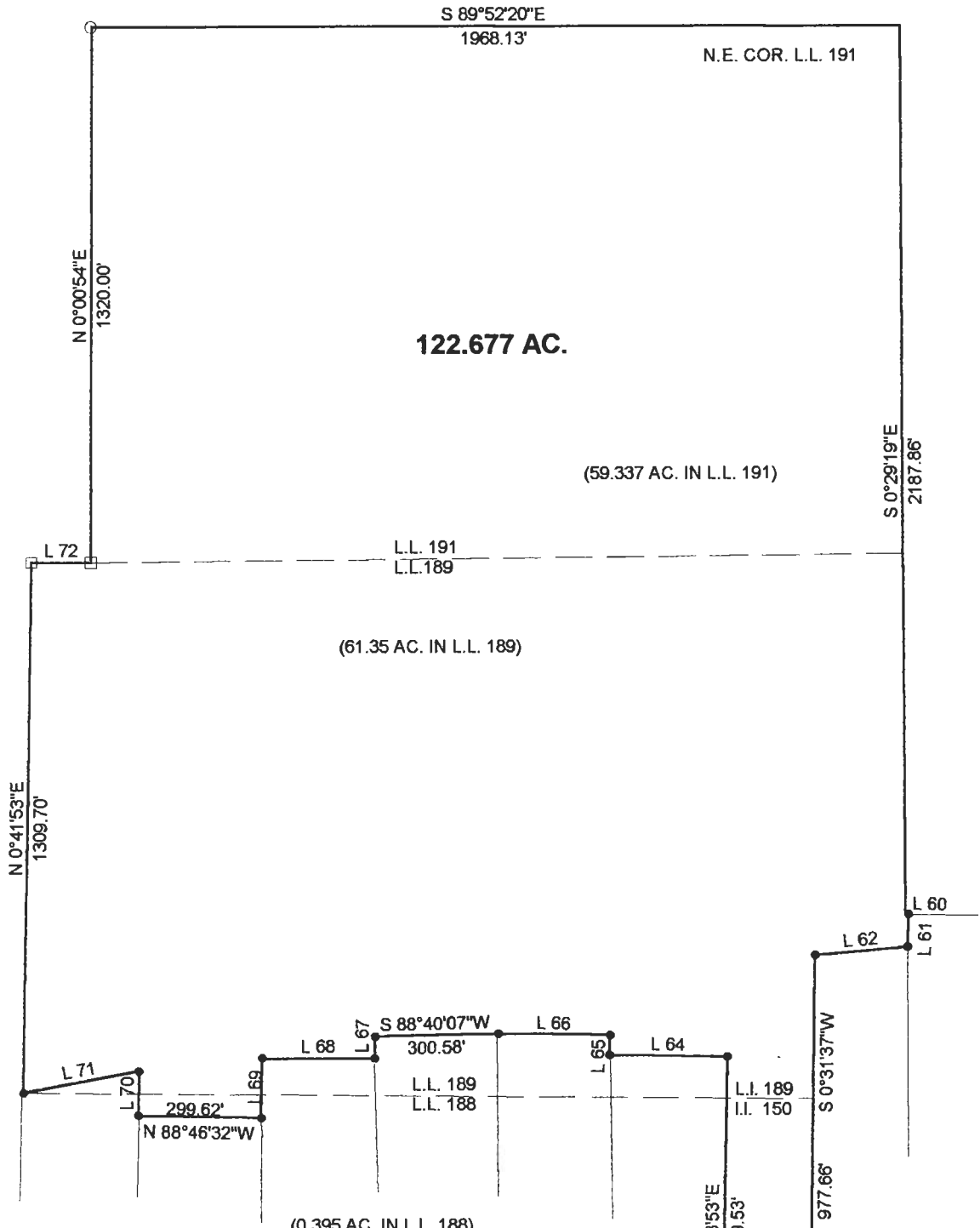
Situated in L.L. 188,189,150 and 191 of Sections 30 and 36 of T.9, R.14, Athens Township, Athens County, Ohio and being more particularly described as follows:

Beginning at the North-east corner of L.L.191 thence, South 00 degrees 29 minutes 19 seconds East, 2187.86 feet to a point; thence, South 89 degrees 08 minutes 10 seconds East, 7.00 feet to an iron pin found; thence, South 00 degrees 48 minutes 31 seconds West, 80.73 feet to an iron pin found; thence, South 84 degrees 54 minutes 42 seconds West, 225.00 feet to an iron pin found; thence, South 00 degrees 31 minutes 37 seconds West, 977.66 feet to a point in Lemaster Road; thence, along said road, South 81 degrees 41 minutes 26 seconds West, 218.20 feet to a point; thence, leaving said road, North 00 degrees 53 minutes 53 seconds East, 759.53 feet to an iron pin found; thence, North 89 degrees 08 minutes 53 seconds West, 285.89 feet to an iron pin found; thence, North 00 degrees 44 minutes 48 seconds East, 49.42 feet to an iron pin found; thence, North 89 degrees 02 minutes 02 seconds West, 271.47 feet to an iron pin found; thence, South 88 degrees 40 minutes 07 seconds West, 300.58 feet to an iron pin found; thence, South 00 degrees 43 minutes 53 seconds West, 54.20 feet to an iron pin found; thence, North 89 degrees 37 minutes 48 seconds West, 275.00 feet to an iron pin found; thence, South 00 degrees 50 minutes 14 seconds West, 148.01 feet to an iron pin found; thence, North 88 degrees 46 minutes 32 seconds West, 299.62 feet to an iron pin found; thence, North 00 degrees 48 minutes East, 110.02 feet to an iron pin found; thence, South 79 degrees 19 minutes 28 seconds West, 287.88 feet to an iron pin found; thence, North 00 degrees 41 minutes 53 seconds East, 1309.70 feet to a stone found; thence, South 89 degrees 39 minutes 24 seconds East, 144.07 feet to a stone found; thence, North 00 degrees 00 minutes 54 seconds East, 1320.00 feet to an iron pin set; thence, South 89 degrees 52 minutes 20 seconds East, 1968.13 feet to the point of beginning and containing 122.677 acres of which 59.337 acres are in L.L. 191, 61.35 acres are in L.L. 189, 0.395 acres are in L.L. 188 and 1.595 acres are in L.L. 150.
Subject to all easements and rights of way of record.

The above description is based on a field survey by John M. Branner on July 1990



Description checked for
Mathematical Accuracy
ATHENS COUNTY
ENGINEER'S OFFICE
BY: S. Blanner
DATE: 9-3-01



Line	Bearing	Distance
60	S 89°08'10"E	7.00'
61	S 0°48'31"W	80.73'
62	S 84°54'42"W	225.00'
63	S 81°41'26"W	218.20'
64	N 89°08'53"W	285.89'
65	N 0°44'48"E	49.42'
66	N 89°02'02"W	271.47'
67	S 0°43'53"W	54.20'
68	N 89°37'48"W	275.00'
69	S 0°50'14"W	148.01'
70	N 0°48'00"E	110.02'
71	S 79°19'28"W	287.88'
72	S 89°39'24"E	144.07'

Description checked for
Mathematical Accuracy
ATHENS COUNTY
ENGINEER'S OFFICE
BY: *S. Blaus*
DATE: *4-3-01*



SCALE 1 INCH = 400 FEET
● = IRON PIN FD.
○ = IRON PIN SET
□ = STONE FD

**SURVEY OF A 122.677 ACRE TRACT
IN L.L. 188, 189, 150, 191 OF
SECTIONS 30 & 36, T.9, R.14,
ATHENS TOWNSHIP
ATHENS COUNTY, OHIO
SURVEYED JULY 1990**

BY: *John M. Branner*
**JOHN M. BRANNER P.S. 6805
12500 N. PEACH RIDGE ROAD
ATHENS, OHIO 45701
(740) 592-5778**



