

BRANNER SURVEYING

MEMBER-PROFESSIONAL LAND SURVEYORS OF OHIO

12500 N. PEACH RIDGE ROAD
ATHENS, OHIO 45701

JOHN M. BRANNER
Registered Land Surveyor

TELEPHONE
(614) 592-5778

DESCRIPTION OF A 61.40 ACRE TRACT

SITUATED IN SECTION 30, ATHENS TWP. ATHENS COUNTY, OHIO

Commencing at a stone at the North-west corner of Lease Lot 146, said stone being the POINT OF BEGINNING;
thence South 9 degrees 29 minutes 14 seconds West, a distance of 1397.91 feet to a stone;
thence North 81 degrees 01 minute 30 seconds West, a distance of 880.44 feet to an iron pin;
thence North 6 degrees 09 minutes 33 seconds East, a distance of 417.87 feet to an iron pin;
thence North 81 degrees 52 minutes 45 seconds West, a distance of 756.90 feet to an iron pin;
thence North 8 degrees 22 minutes 23 seconds East, a distance of 869.70 feet to an oak stump (iron pin set) ;
thence North 81 degrees 02 minutes 37 seconds West, a distance of 450.90 feet
thence North 7 degrees 38 minutes 00 seconds West, a distance of 306.50 feet to an iron pin;
thence North 15 degrees 34 minutes 00 seconds West, a distance of 255.97 feet to an iron pin;
thence North 43 degrees 26 minutes 00 seconds West, a distance of 209.43 feet to an iron pin;
thence North 23 degrees 43 minutes 00 seconds West, a distance of 189.09 feet to an iron pin;
thence North 7 degrees 14 minutes 00 seconds West, a distance of 242.76 feet to a point in Lemaster Road';
thence, along said road, South 86 degrees 54 minutes 55 seconds East, a distance of 67.89 feet;
thence, leaving said road, South 3 degrees 06 minutes 00 seconds East, a distance of 225.72 feet, passing an iron pin at 30.0 feet;
thence South 23 degrees 43 minutes 00 seconds East, a distance of 171.31 feet to an iron pin;
thence South 43 degrees 26 minutes 00 seconds East, a distance of 213.15 feet to an iron pin;
thence South 15 degrees 34 minutes 00 seconds East, a distance of 272.24 feet to an iron pin;
thence South 7 degrees 38 minutes 00 seconds East, a distance of 258.51 feet to an iron pin;
thence North 5 degrees 02 minutes 00 seconds East, a distance of 1053.07 feet; to a point in Lemaster Road;
thence, along said road, South 85 degrees 47 minutes 21 seconds East, a distance of 221.53 feet;
thence, leaving said road South 10 degrees 00 minutes 52 seconds West, a distance of 708.49 feet. passing an iron pin at 678.49 feet;
thence South 79 degrees 55 minutes 55 seconds East, a distance of 298.34 feet to an iron pin;

Description checked for
Mathematical Accuracy
ATHENS COUNTY
ENGINEER'S OFFICE
BY: *Christy Hedger*
DATE: 07/28/13

195

ATH #30

BRANNER SURVEYING

MEMBER-PROFESSIONAL LAND SURVEYORS OF OHIO

12500 N. PEACH RIDGE ROAD
ATHENS, OHIO 45701

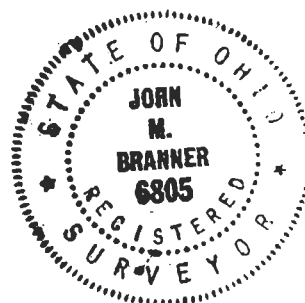
JOHN M. BRANNER
Registered Land Surveyor

TELEPHONE
(614) 592-5778

thence continuing along said line, South 79 Degrees 55 Minutes 55 Seconds East, a distance of 285.00 feet to an iron pin;
thence North 10 degrees 04 minutes 05 seconds East, a distance of 35.67 feet to an iron pin;
thence South 79 degrees 55 minutes 55 seconds East, a distance of 285.39 feet to an iron pin;
thence South 10 degrees 04 minutes 05 seconds West, a distance of 115.02 feet to an iron pin;
thence South 81 degrees 01 minute 55 seconds East, a distance of 232.21 feet to an iron pin;
thence North 8 degrees 58 minutes 05 seconds East, a distance of 62.75 feet to an iron pin
thence South 81 degrees 01 minute 55 seconds East, a distance of 201.42 feet to an iron pin;
thence South 8 degrees 58 minutes 05 seconds West, a distance of 263.67 feet to an iron pin;

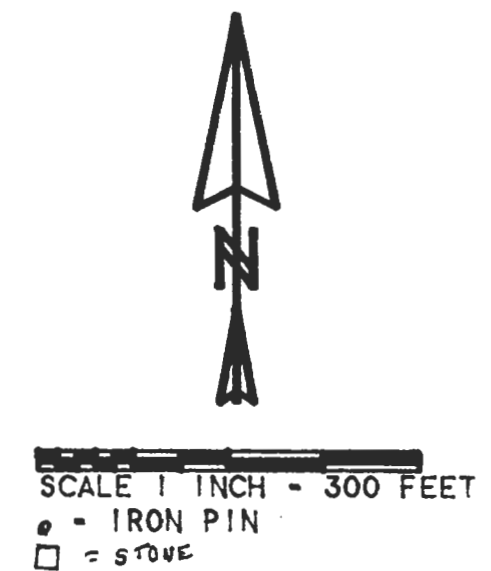
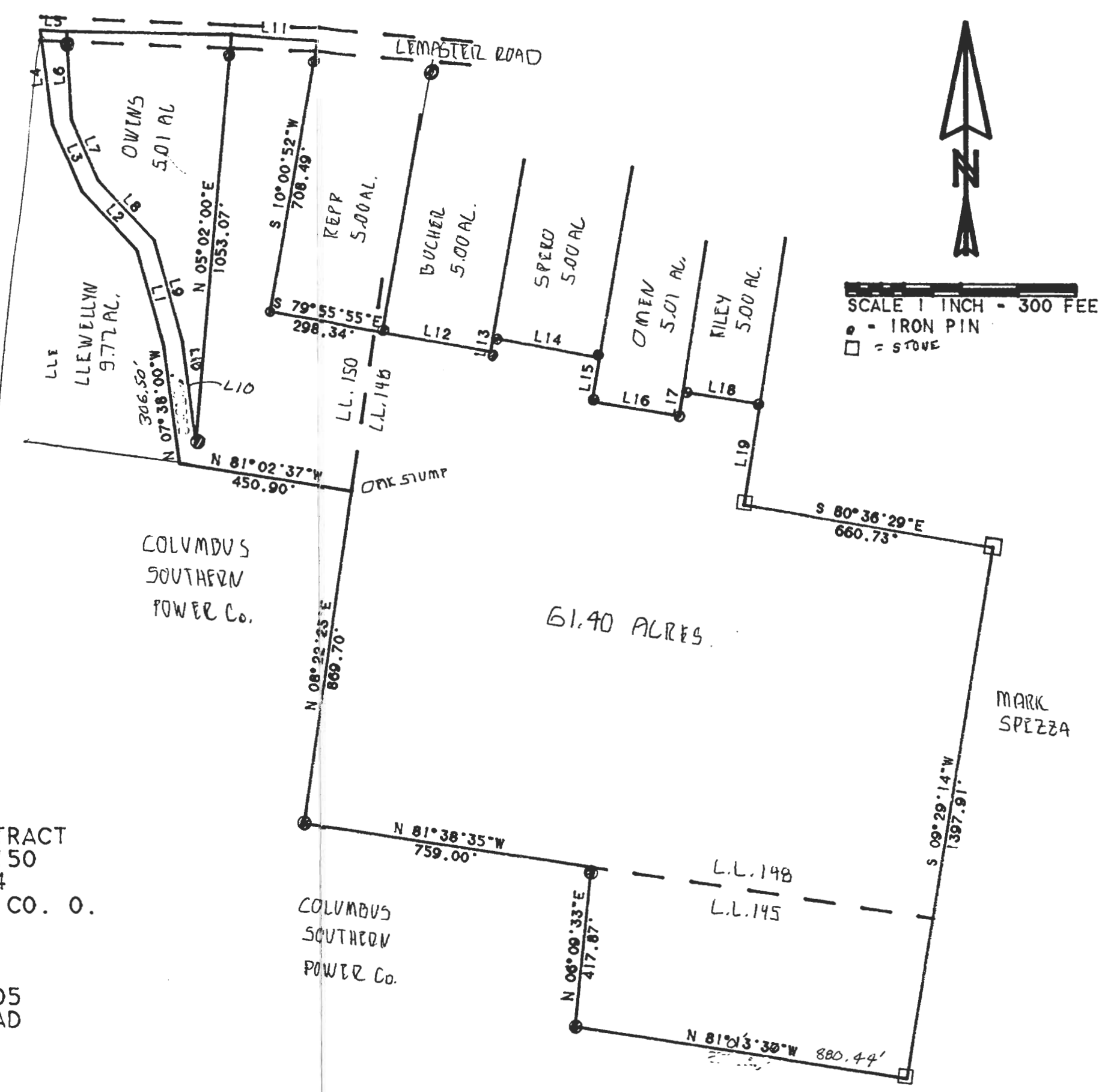
thence South 80 degrees 36 minutes 29 seconds East, a distance of 660.73 feet to the POINT OF BEGINNING; said described tract containing 61.40 acres.

Subject to all easements and rights of way of record.



196

LINE	BEARING	DISTANCE
L 1	N 15° 34' 00" W	255.97'
L 2	N 43° 26' 00" W	209.43'
L 3	N 23° 43' 00" W	189.09'
L 4	N 07° 14' 00" W	242.76'
L 5	S 86° 54' 55" E	67.89'
L 6	S 03° 06' 00" E	225.72'
L 7	S 23° 43' 00" E	171.31'
L 8	S 43° 26' 00" E	213.15'
L 9	S 15° 34' 00" E	272.24'
L 10	S 07° 38' 00" E	258.51'
L 11	S 85° 47' 21" E	221.53'
L 12	S 79° 55' 55" E	285.00'
L 13	N 10° 04' 05" E	35.67'
L 14	S 79° 55' 55" E	285.39'
L 15	S 10° 04' 05" W	115.02'
L 16	S 81° 01' 55" E	232.21'
L 17	N 08° 58' 05" E	62.75'
L 18	S 81° 01' 55" E	201.42'
L 19	S 08° 58' 05" W	263.67'



SURVEY OF A 61.40 ACRE TRACT
 IN L.L. 145, L.L. 148, 150
 IN SECTION 30, T.9, R.14
 ATHENS TOWNSHIP, ATHENS CO. O.

SURVEYED JULY 1993
 JOHN M. BRANNER P.S. 6805
 12500 N. PEACH RIDGE ROAD
 ATHENS, OHIO 592-5778

