

DESCRIPTION OF A 5.02 ACRE TRACT

Situated in Farm-lot 164, Section 32, T.9, R.14, Athens Township, Athens County, Ohio and being more particular described as follows:

Commencing at the South-east corner of Farm-lot 164, Section 32, T.9, r.14, Athens Township, thence, North 00 Degrees 06 Minutes 40 Seconds East, 1697.02 feet to an iron pin; thence, East, 337.98 feet to an iron pin found and being the POINT OF BEGINNING;

thence, along the West -line of a 4.46 acre tract South 1 degrees 47 minutes 40 seconds East, a distance of 628.82 feet to a point in Township Road 28, passing an iron pin set at 580.69 feet;

thence, along said road, South 31 degrees 52 minutes 23 seconds West, a distance of 74.23 feet;

thence, leaving said road, North 77 degrees 57 minutes 06 seconds West, a distance of 317.76 feet to an iron pin set, passing an iron pin set at 33.88 feet;

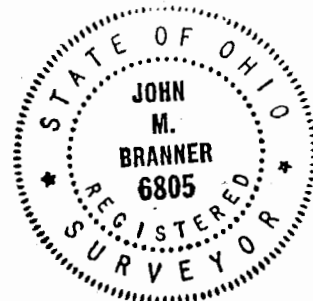
thence North 2 degrees 23 minutes 14 seconds East, a distance of 355.86 feet to an iron pin set;

thence North 5 degrees 20 minutes 26 seconds West, a distance of 256.86 feet to an iron pin set in Grantor's North-line;

thence North 87 degrees 39 minutes 02 seconds East, a distance of 339.64 feet to the POINT OF BEGINNING; said described tract containing 5.020 acres.

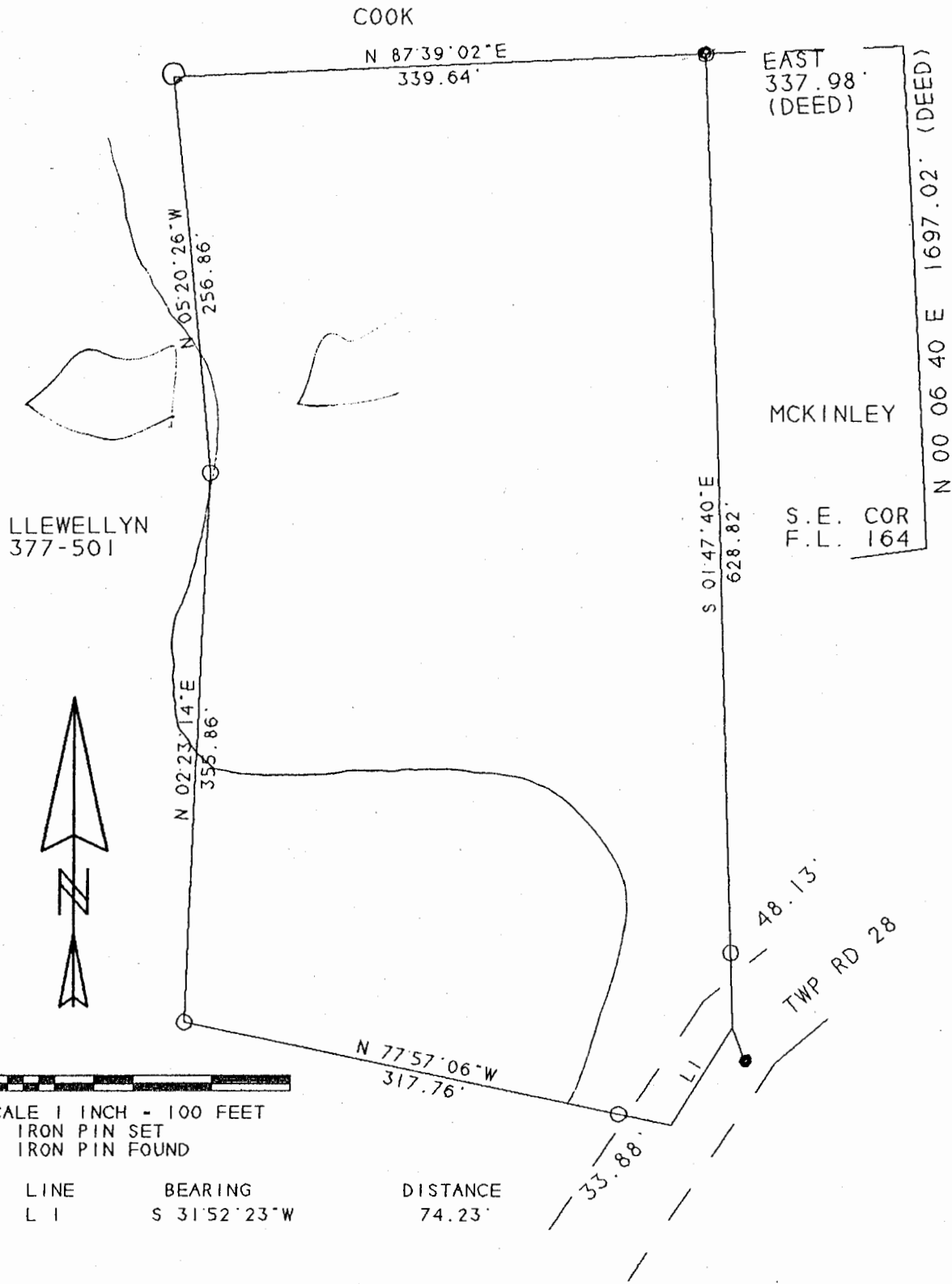
Subject to all easements and rights of way of record.

*John M. Branner*  
John M. Branner P.S. 6805



Description checked for  
Mathematical Accuracy  
ATHENS COUNTY  
ENGINEER'S OFFICE  
BY: S. Blausz  
DATE: 7-25-97

62  
ATH #32



SURVEY OF A 5.02 ACRE TRACT  
 IN F.L. 164, SECTION 32, T.9, R.14  
 ATHENS TOWNSHIP, ATHENS COUNTY, OHIO  
 SURVEYED MAY 1996

*John M. Branner*  
 JOHN M. BRANNER P.S. 6805  
 12500 N. PEACH RIDGE ROAD  
 ATHENS, OHIO 592-5778

Description checked for  
 Mathematical Accuracy  
 ATHENS COUNTY  
 ENGINEER'S OFFICE  
 BY: *S. Blawie*  
 DATE: 7-25-97

