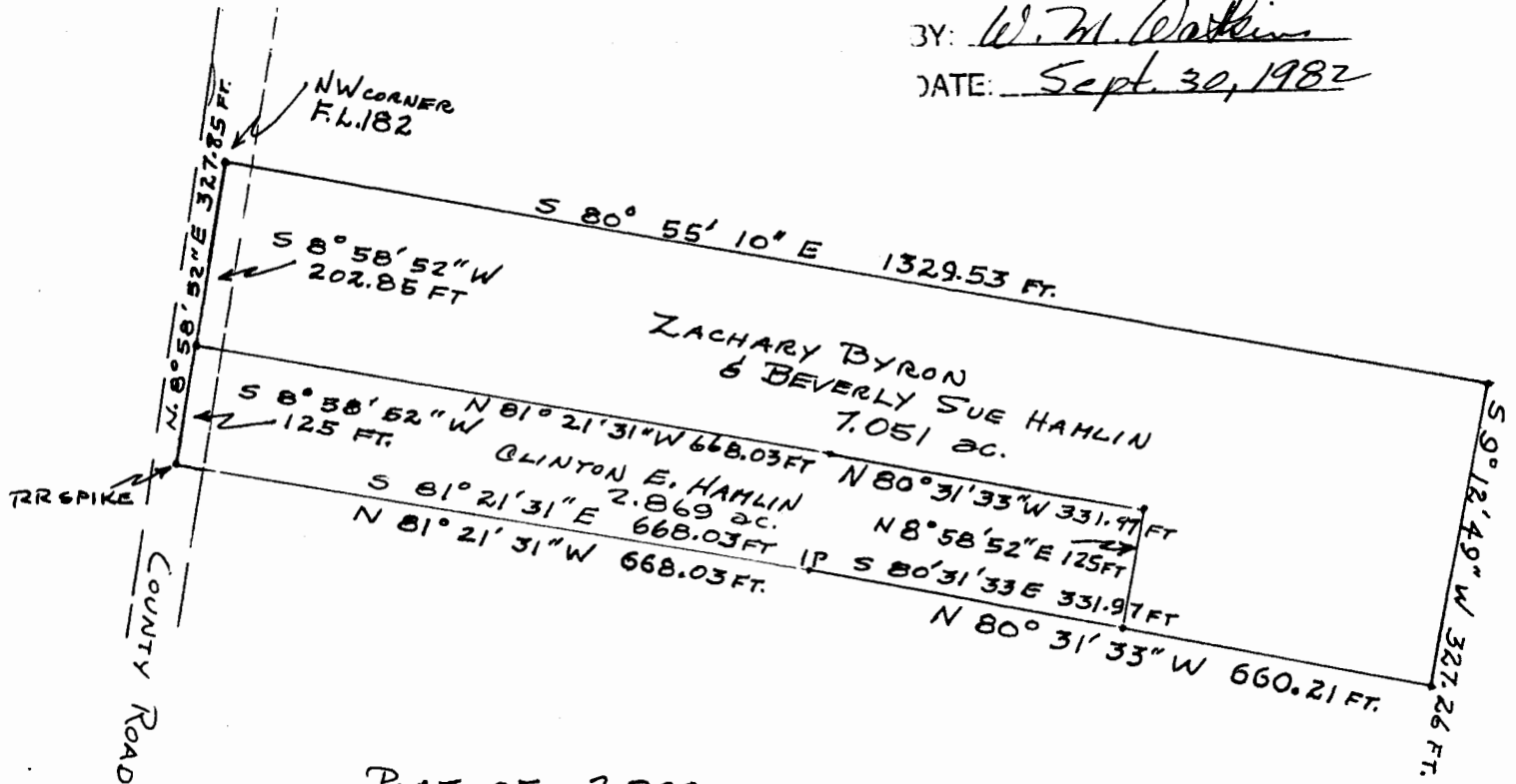


Description checked for
 Mathematical Accuracy
 ATHENS COUNTY
 ENGINEER'S OFFICE

BY: W. M. Watkins

DATE: Sept. 30, 1982



PLAT OF 2.869 acres
 SECTION 35, ATHENS TOWNSHIP
 ATHENS COUNTY, OHIO



Beginning at an iron pin in the center of County Road 9, said pin being in the northwest corner of Farm Lot 182, Section 35, Athens Township, Athens County, Ohio; thence South 8 degrees 58 minutes 52 seconds West, 202.85 feet to a point, the place of beginning of the tract herein conveyed; thence continuing South 8 degrees 58 minutes 52 seconds West a distance of 125 feet to the southwest corner of the 9.92 acre tract of which the tract herein conveyed is a part; thence South 81 degrees 21 minutes 31 seconds East a distance of 668.03 feet to an iron pin; thence South 80 degrees 31 minutes 33 seconds East a distance of 331.97 feet to a point; thence North 8 degrees 58 minutes 52 seconds East a distance of 125 feet to a point; thence North 80 degrees 31 minutes 33 seconds West 331.97 feet to a point; thence North 81 degrees 21 minutes 31 seconds West 668.03 feet to the place of beginning and containing 2.869 acres, more or less.

Sec. 35, Athens