

DESCRIPTION OF A .302 ACRE TRACT (TRACT 1)

Situated in F.L. 40, Section 8, T.9, R.14, City of Athens, Athens County, Ohio and being a Part of a tract of land as described in Volume 245, Page 522, Athens County Deed Records and being more Particularly described as follows:

Beginning at an iron Pin found at the North-east corner of Lot 32 of Stanley Heights Addition, thence, North 57 Degrees 42 Minutes 20 Seconds West, 102.93 feet to a Point; thence, North 13 Degrees 43 Minutes 21 Seconds East, 13.40 feet to a Point in the South Right of Way line of Mulligan Road, an iron Pin set bears North 13 Degrees 43 Minutes 21 Seconds East 5.87 feet; thence, along said Right of Way North 81 Degrees 46 Minutes 16 Seconds East 62.46 feet to a Point; thence, South 72 Degrees 41 Minutes 30 Seconds East, 158.80 feet to a Point; thence leaving said Right of Way South 16 Degrees 49 Minutes 47 Seconds West 80.40 feet to an iron Pin set, Passing an iron Pin set at 5.75 feet; thence, along the North-line of a 0.544 acre tract, North 69 Degrees 06 Minutes West, 25.00 feet to an iron Pin found; thence, North 65 Degrees 12 Minutes 19 Seconds West, 91.39 feet to the Point of beginning and containing 0.302 acres.

Subject to all easements and rights of way of record.

John M. Branner
John M. Branner R.L.S. 6805



Description checked for
Mathematical Accuracy
ATHENS COUNTY
ENGINEER'S OFFICE

BY: Bob Eidenberg
DATE: 1/9/86

ATH. 8

47

X-24

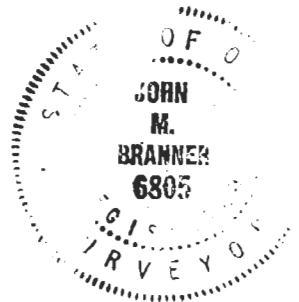
DESCRIPTION OF A .02 ACRE TRACT

Situated in F.L.40, Section 8, T.9, R.14, City of Athens, Athens County, Ohio and being a part of Lot 32 of Stanley Heights Addition and being more particularly described as follows:

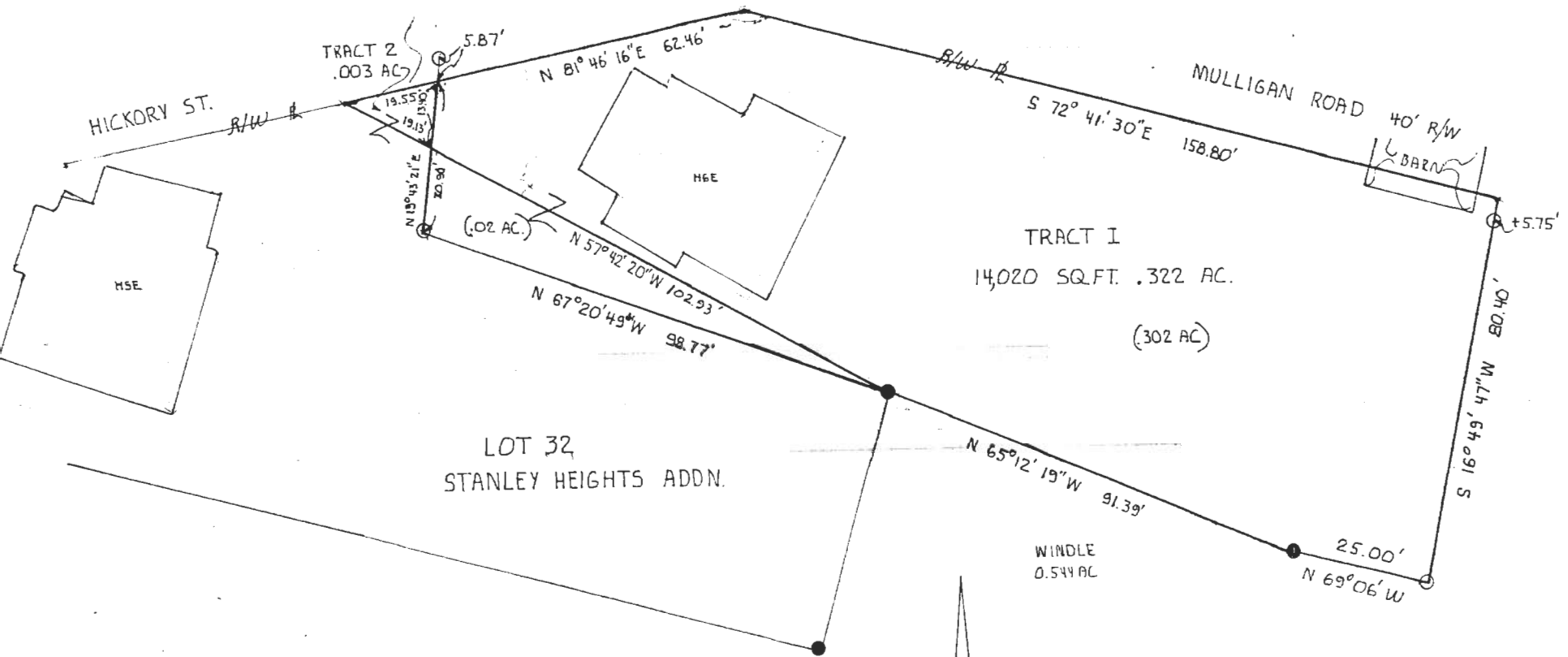
Beginning at an iron Pin found at the North-east corner of Lot 32 of Stanley Heights Addition, thence, N 67 Degrees 20 Minutes 49 Seconds West, 98.77 feet to an iron Pin set; thence, North 13 Degrees 43 Minutes 21 Seconds East, 17.45 feet to a Point in the North-line of said Lot 32; thence, along said line South 57 Degrees 42 Minutes 20 Seconds East, 102.93 feet to the Point of beginning and containing 0.02 acres.

Subject to all easements and rights of way of records.

John M. Branner
John M. Branner R.L.S. 6805

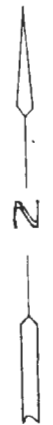


Description checked for
Mathematical Accuracy
ATHENS COUNTY
ENGINEER'S OFFICE
BY: *Bob Eichenberg*
DATE: *11/9/86*



LOT 32
STANLEY HEIGHTS ADDN.

SURVEY OF A 0.322 ACRE TRACT
 AND A .003 ACRE TRACT IN
 F.L. 40, SEC. 8, T. 9, R. 14, CITY OF
 ATHENS, OHIO
 SURVEYED SEPT 85
John M. Branner
 JOHN M. BRANNER REG. SURVEYOR 6805



SCALE: 1"=20'
 ●=IRON PIN FOUND
 ○=IRON PIN SET