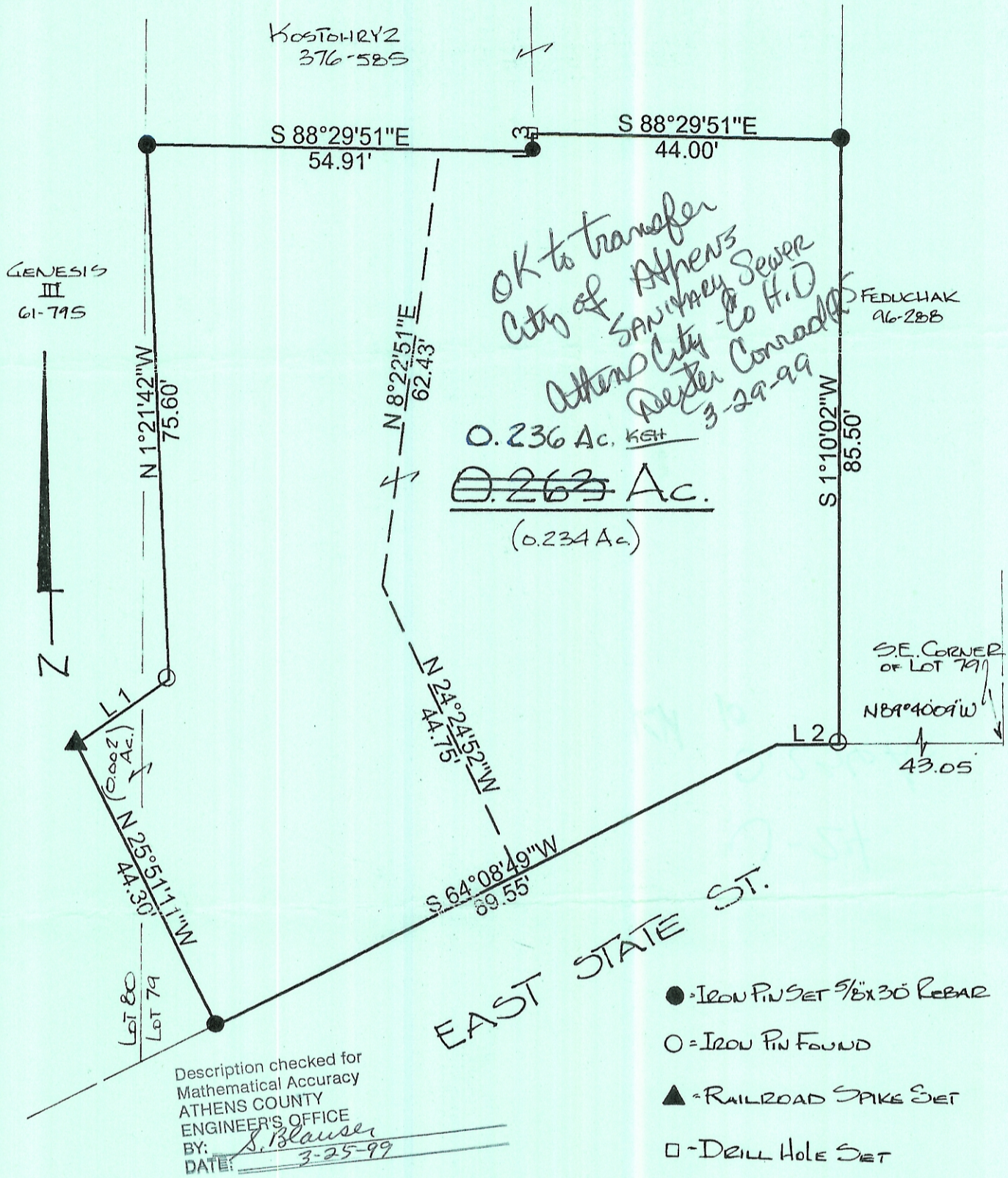


**HIGHLAND SURVEYING**  
REGISTERED PROFESSIONAL LAND SURVEYOR



Line	Bearing	Distance
1	N 55°41'07"E	16.19'
2	N 89°40'09"W	8.80'
3	N 0°01'38"W	2.50'

PLAT of 0.236 KSH SURVEY OF A 0.263 AC. TRACT  
 SURVEYED for DEAN WUPRICK  
 SUBDIVISION IL 79 : 80  
 TOWNSHIP ATHENS SECTION      TOWN      RANGE       
 CORPORATION ATHENS COUNTY ATHENS STATE OHIO  
 SCALE 1" = 20' DATE SEPT. 1998

KENNETH E. HIGHLAND  
80 FAYETTE STREET  
NELSONVILLE, OHIO 45764  
614-753-1264

*Kenneth E. Highland*  
Kenneth E. Highland S-7581

