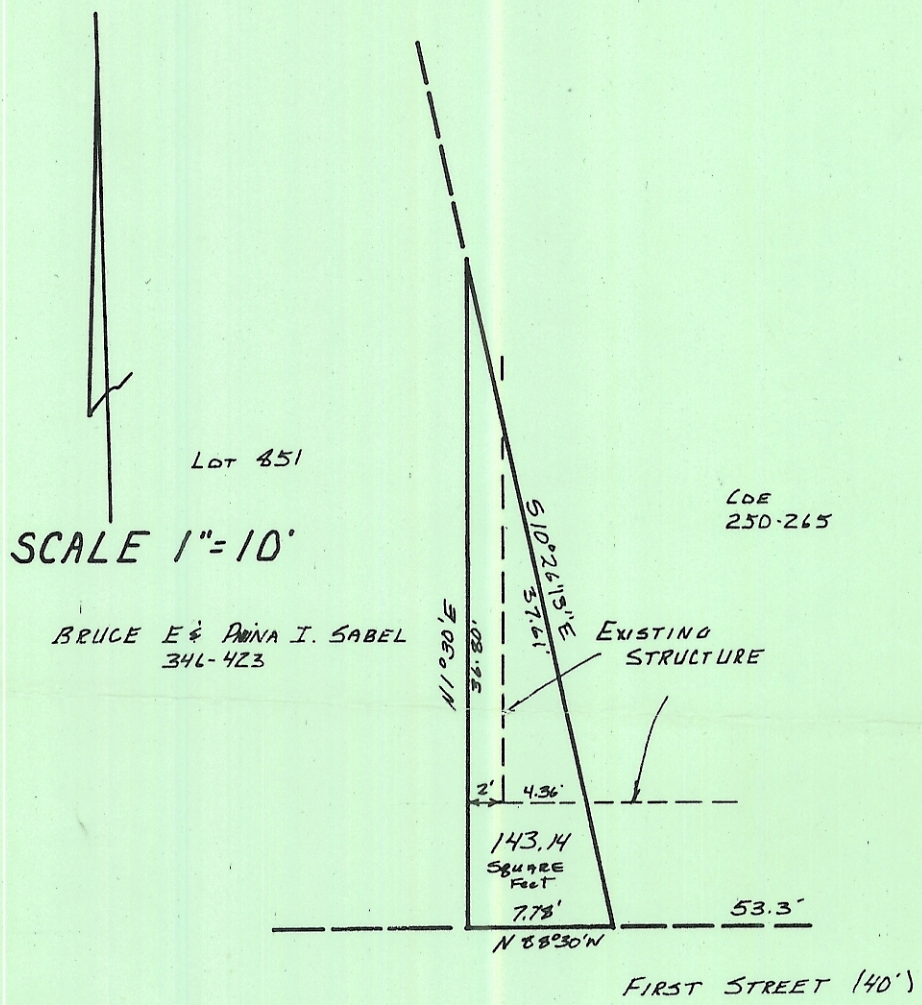


M-19



SURVEY OF 143.14 SQUARE FEET  
PART OF LOT 851 IN BLACKWOOD'S  
ADDITION TO THE CITY OF ATHENS, OHIO  
SURVEYED MAY 1, 1982  
BY:

Gregory K. Wright  
GREGORY K. WRIGHT REGISTERED SURVEYOR S-6535

Description checked for  
Mathematical Accuracy  
ATHENS COUNTY  
ENGINEER'S OFFICE

BY: Charles Mohr  
DATE: 5-6-82