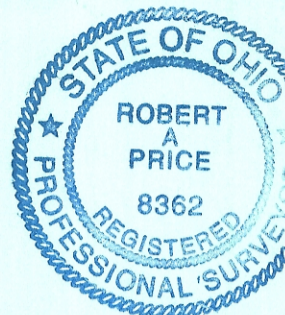


PLAT of Survey

Situate in The Revised and Amended Park Hill and The Locust Heights Subdivisions, City of Athens, Township of Athens, County of Athens, State of Ohio.

Being a 0.515 acre Tract A; and a 0.332 acre Tract B. As recorded in Douglas S. and Teresa J. Franklin's Official Record 375 Page 2465.



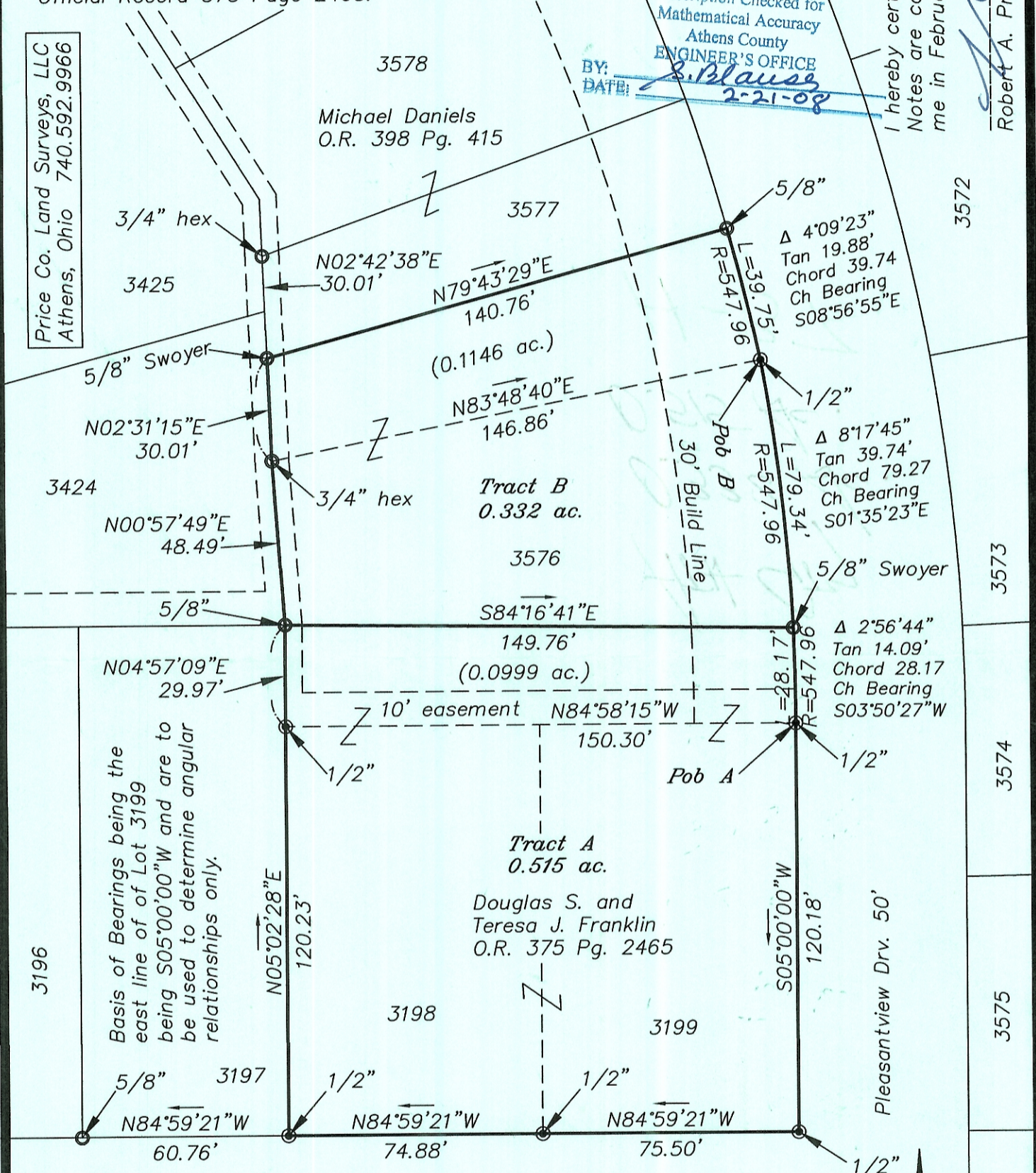
Description Checked for Mathematical Accuracy
Athens County
ENGINEER'S OFFICE

BY: S. Blause
DATE: 2-21-08

I hereby certify that this Plat and Notes are correct, as surveyed by me in February 2008.

Robert A. Price PS 8362

Price Co. Land Surveys, LLC
Athens, Ohio 740.592.9966



Basis of Bearings being the east line of Lot 3199 being S05°00'00"W and are to be used to determine angular relationships only.

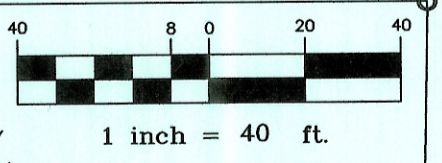
● Iron Pipe Fd.
○ Iron Pin Fd.

Dalton Ave. 40'

Pleasantview Drv. 50'

Eden Pl.

References:
 Deeds Listed
 Tax Maps
 G. Wright PS 6535 Mar 1987 survey
 L. Swoyer PS 6765 Feb 1996 survey
 Park Hill Subdivision Envelopes 363-B and 384-A.
 Locust Heights Env 352-B.
 Townsend Addition Env 273-B.



2099.dwg
19 Feb 2008