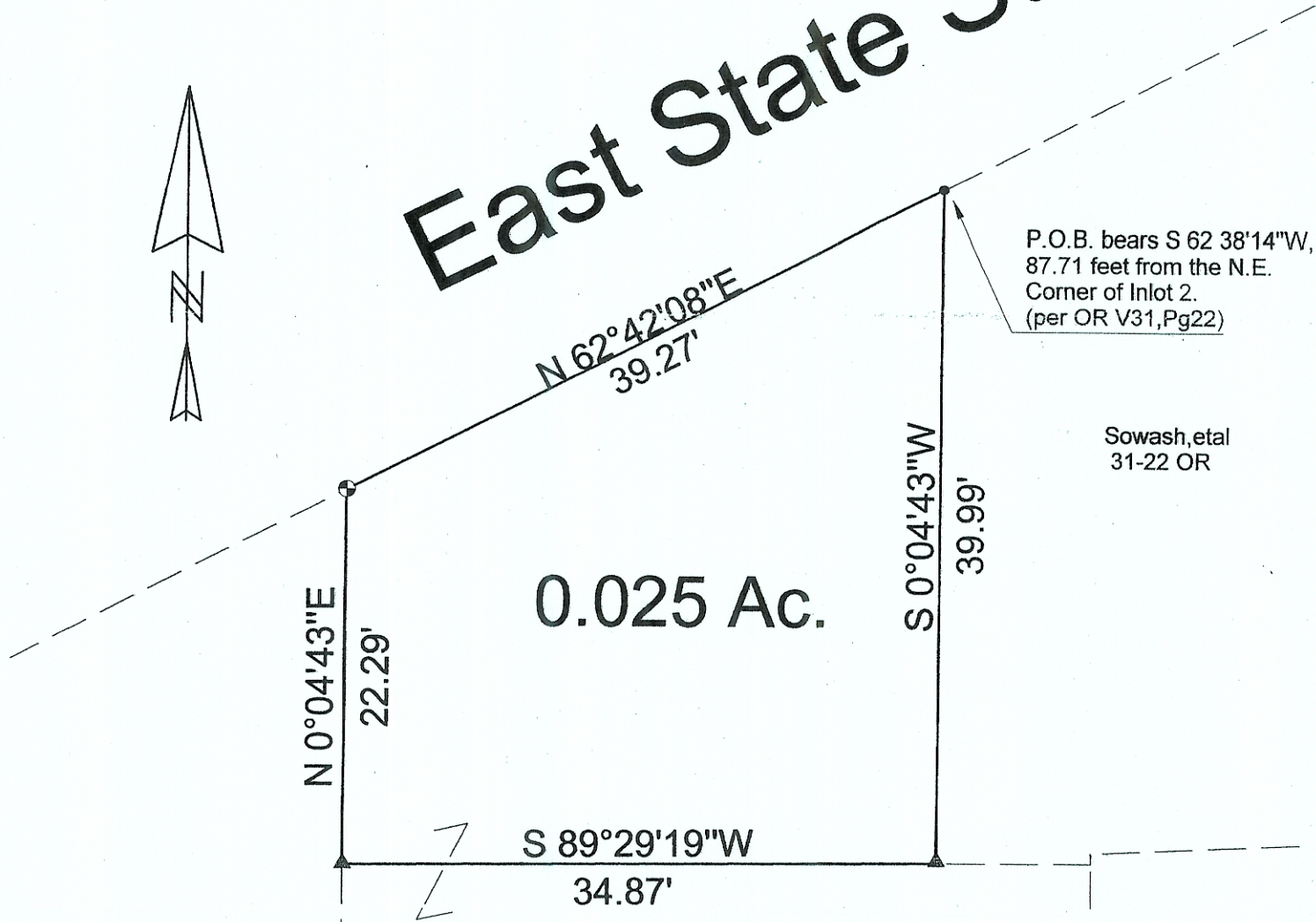
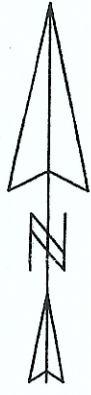


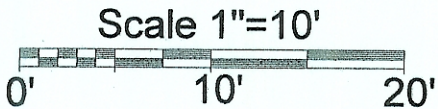
East State St.



P.O.B. bears S 62 38'14"W,
87.71 feet from the N.E.
Corner of Inlot 2.
(per OR V31, Pg22)

Sowash, etal
31-22 OR

PLC Ohio
Properties,
LLC
366-2657 OR



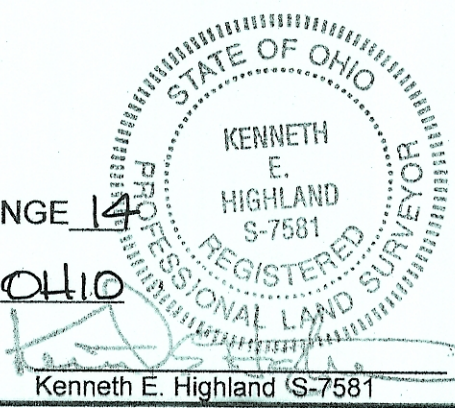
Mollica, Gall, etal.
99-472 OR

- = Iron Pin Found
- ▲ = Railroad Spike Set
- ⊕ = P.K. Nail Set

Description Checked for
Mathematical Accuracy
Athens County
ENGINEER'S OFFICE
BY: S. Blawie
DATE: 4-10-08

PLAT OF SURVEY OF A 0.025 Ac. TRACT
 SURVEYED FOR _____
 SUBDIVISION Inlot 2
 TOWNSHIP ATHENS SECTION - TOWN 9 RANGE 14
 CORPORATION ATHENS COUNTY ATHENS STATE OHIO
 SCALE 1"= 10' DATE APRIL 2008

Kenneth E. Highland
80 Fayette St.
Nelsonville, Ohio 45764
740-753-1264



Kenneth E. Highland S-7581