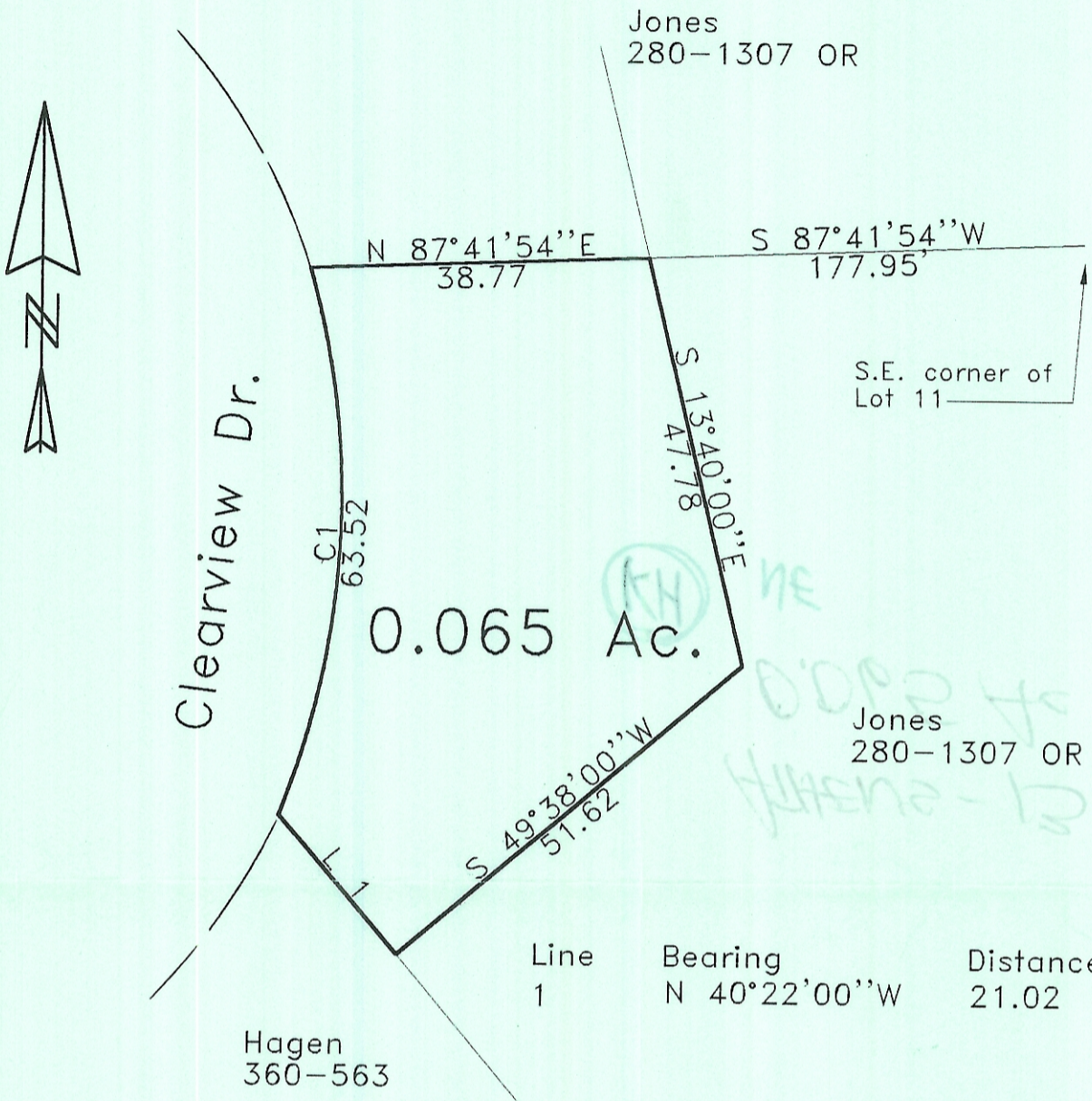
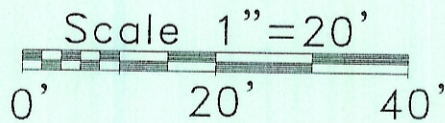


HIGHLAND SURVEYING
Registered Professional Land Surveyor



Curve	Delta Angle	Radius	Chord	Chord Bearing
1	38°12'57.0"	95.240	62.353	N 2°41'02.3" E



Description checked for
Mathematical Accuracy
ATHENS COUNTY
ENGINEER'S OFFICE
BY: S. Blausen
DATE: 1-18-2000

PLAT OF SURVEY OF A 0.065 Ac. TRACT
 SURVEYED FOR SEAN JONES
 SUBDIVISION L.L. 54
 TOWNSHIP ATHENS SECTION 13 TOWN 9 RANGE 14
 CORPORATION - COUNTY ATHENS STATE OHIO
 SCALE 1"= 20' DATE JAN. 2000

Kenneth E. Highland
80 Fayette St.
Nelsonville, Ohio 45764
740-753-1264

STATE OF OHIO
KENNETH E. HIGHLAND
S-7581
REGISTERED LAND SURVEYOR

Kenneth E. Highland S-7581