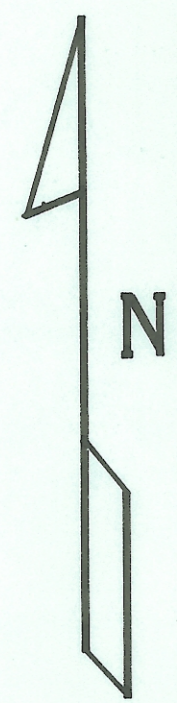


SURVEY OF TWO PARCELS IN
L.L. 95 AND L.L. 98 IN
SECTION 21, T.9.R.14 ATHENS
TOWNSHIP ATHENS COUNTY, OHIO

SURVEYED JAN 1992

JOHN M. BRANNER P.S. 6805
12500 N. PEACH RIDGE ROAD
ATHENS, OHIO 592-5778

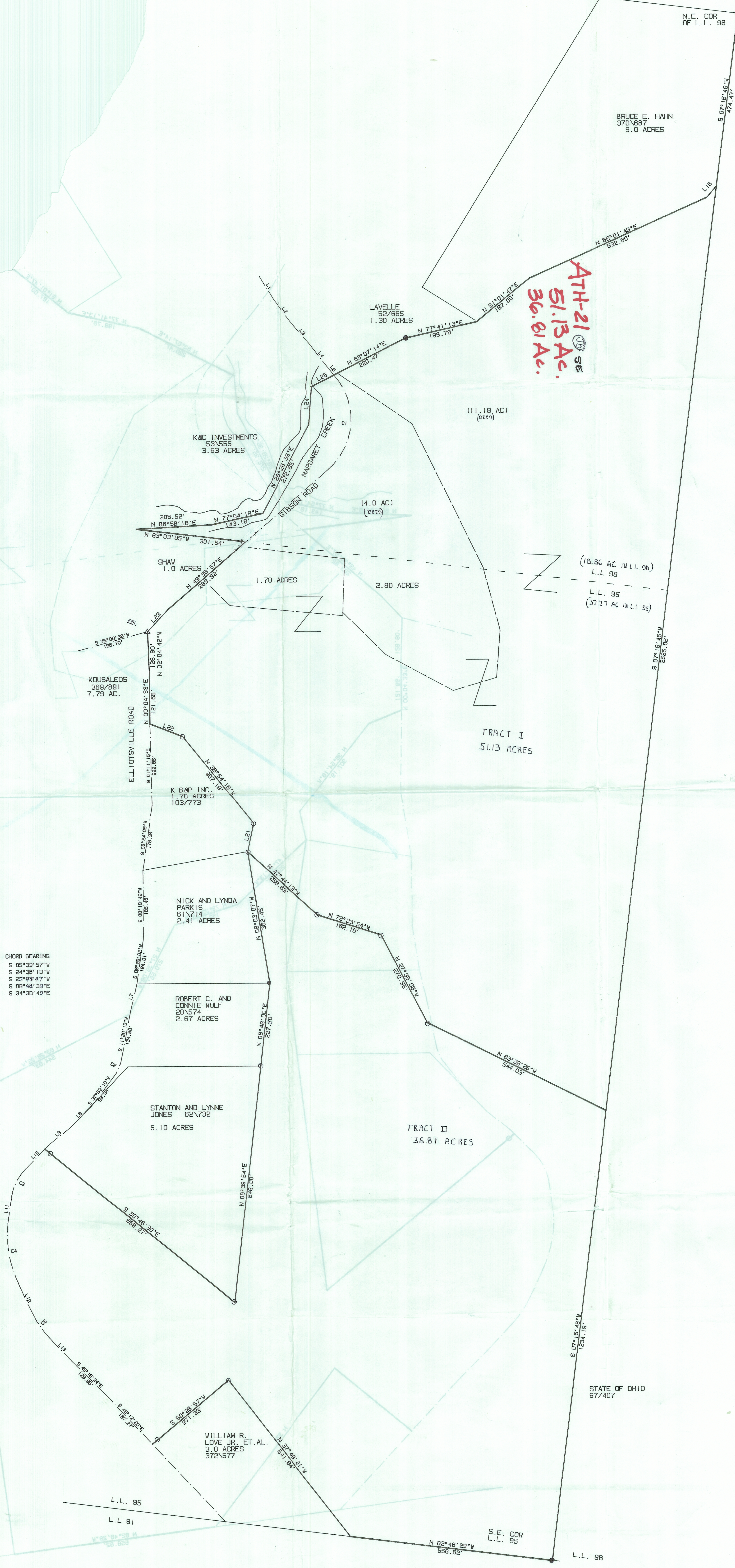


SCALE: 1" = 100'
● = IRON PIN FOUND
○ = IRON PIN SET

CURVE	DELTA ANGLE	RADIUS	ARC	TANGENT	CHORD	CHORD BEARING
C 1	87°57'58"	179.75'	275.97'	173.48'	249.88'	S 05°39'57"W
C 2	28°32'00"	125.80'	58.28'	28.88'	57.74'	S 24°38'10"W
C 3	38°03'35"	143.64'	66.67'	44.73'	85.32'	S 25°47'47"W
C 4	33°49'11"	312.17'	184.28'	84.90'	181.80'	S 08°48'39"E
C 5	17°29'33"	262.18'	80.04'	40.33'	79.73'	S 34°30'40"E

LINE	BEARING	DISTANCE
L 1	S 32°00'15"E	74.77'
L 2	S 37°41'28"E	84.88'
L 3	S 40°41'42"E	87.98'
L 4	S 38°24'32"E	91.03'
L 5	S 38°18'59"E	90.87'
L 6	S 43°14'01"W	79.89'
L 7	S 13°45'04"W	73.35'
L 8	S 44°55'25"W	78.72'
L 9	S 51°38'43"W	95.71'
L 10	S 43°18'33"W	79.57'
L 11	S 08°12'58"W	59.95'
L 12	S 25°43'15"E	85.25'
L 13	S 43°13'02"E	86.74'
L 14	S 83°42'01"W	71.38'
L 15	S 88°58'18"E	54.92'
L 16	N 40°16'23"E	40.33'

LINE	BEARING	DISTANCE
L 21	N 12°21'20"E	79.50'
L 22	N 88°38'41"W	95.74'
L 23	N 43°14'01"E	79.99'
L 24	N 04°07'30"E	103.85'
L 25	N 63°07'13"E	70.00'



ATH-21 SE
51.13 Ac.
36.81 Ac.

STATE OF OHIO
67/407

S.E. COR
L.L. 95