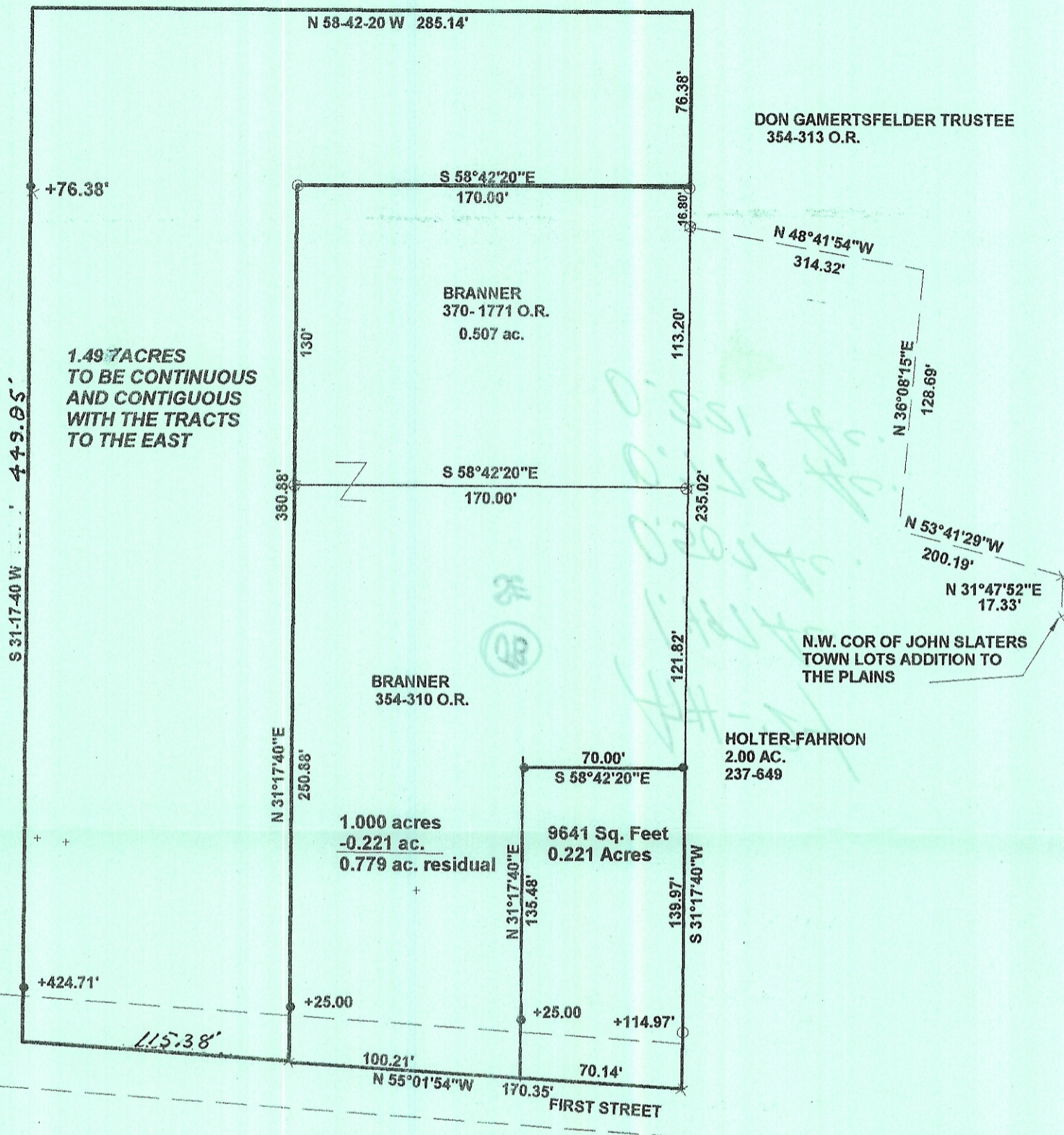


EXHIBIT A

DON GAMERTSFELDER TRUSTEE
354-313 O.R.

DON GAMERTSFELDER TRUSTEE
354-313 O.R.



SURVEY OF A 1.497 ACRE TRACT
IN L.L. 112, SECTION 24, T.9, R.14,
ATHENS TOWNSHIP
ATHENS COUNTY, OHIO
SURVEYED OCT. 2005

BY: John M. Branner
JOHN M. BRANNER P.S. 6805
12500 N. PEACH RIDGE ROAD
ATHENS, OHIO 45701
(740) 592-5778



SCALE 1 INCH = 60 FEET
● = IRON PIN SET
○ = IRON PIN FD.
ASSUMED BEARINGS
TO BE USED TO DENOTE
INTERIOR ANGLE ONLY

Description Checked for
Mathematical Accuracy
Athens County
ENGINEER'S OFFICE

BY: J. Blausen
DATE: 9-29-05