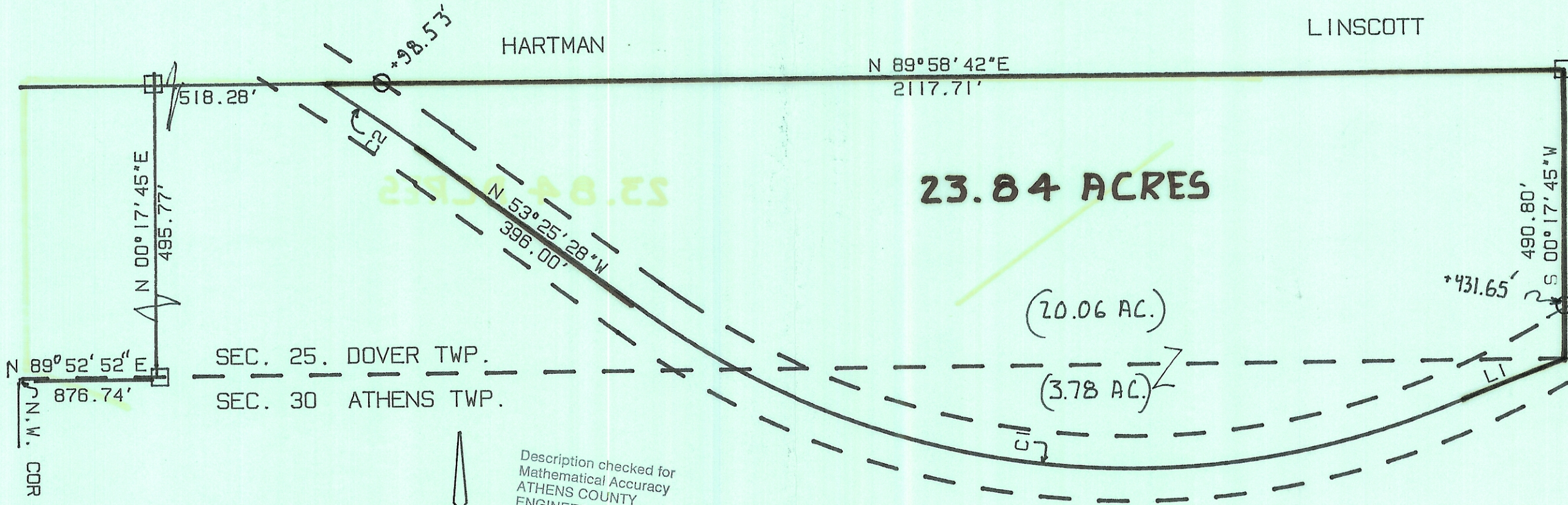


CURVE	DELTA ANGLE	RADIUS	ARC	TANGENT	CHORD	CHORD BEARING
C 1	57°52'00"	1432.40'	1446.67'	791.81'	1385.97'	N 82°21'28"W
C 2	03°09'21"	4774.65'	262.98'	131.52'	262.95'	N 55°00'08"W

LINE	BEARING	DISTANCE
L 1	S 68°42'32"W	223.35'



23.84 ACRES

(20.06 AC.)

(3.78 AC.)

SEC. 25. DOVER TWP.
SEC. 30 ATHENS TWP.

Description checked for
Mathematical Accuracy
ATHENS COUNTY
ENGINEER'S OFFICE
BY: *S. Blausen*
DATE: *3-13-03*

SURVEY OF A 23.84 ACRE TRACT
IN SECTION 25, T.10, R.14, DOVER TOWNSHIP
AND SECTION 30, T.9, R.14 ATHENS TOWNSHIP,
ATHENS COUNTY, OHIO

SURVEYED MARCH 1992
John M. Branner
JOHN M. BRANNER P.S. 6805
12500 N. PEACH RIDGE ROAD
ATHENS, OHIO 614-592-5778

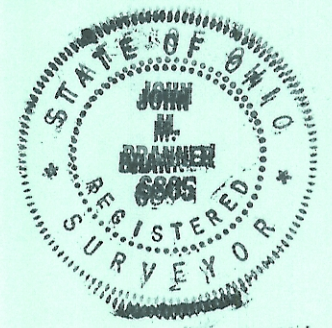
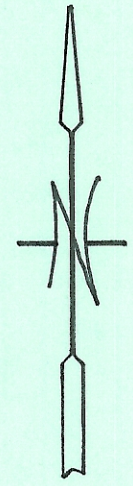


EXHIBIT "A" 2 OF 2

SCALE 1 INCH = 200 FEET
● = IRON PIN FOUND
○ = IRON PIN SET
▽ = RAILROAD SPIKE SET
□ = STONE FOUND



N 00°17'45"E
495.77'
N 89°52'52"E
876.74'
N.W. COR SEC. 30

490.80'
S 00°17'45"W
+431.65'

518.28'

N 89°58'42"E
2117.71'

HARTMAN

L INSCOTT