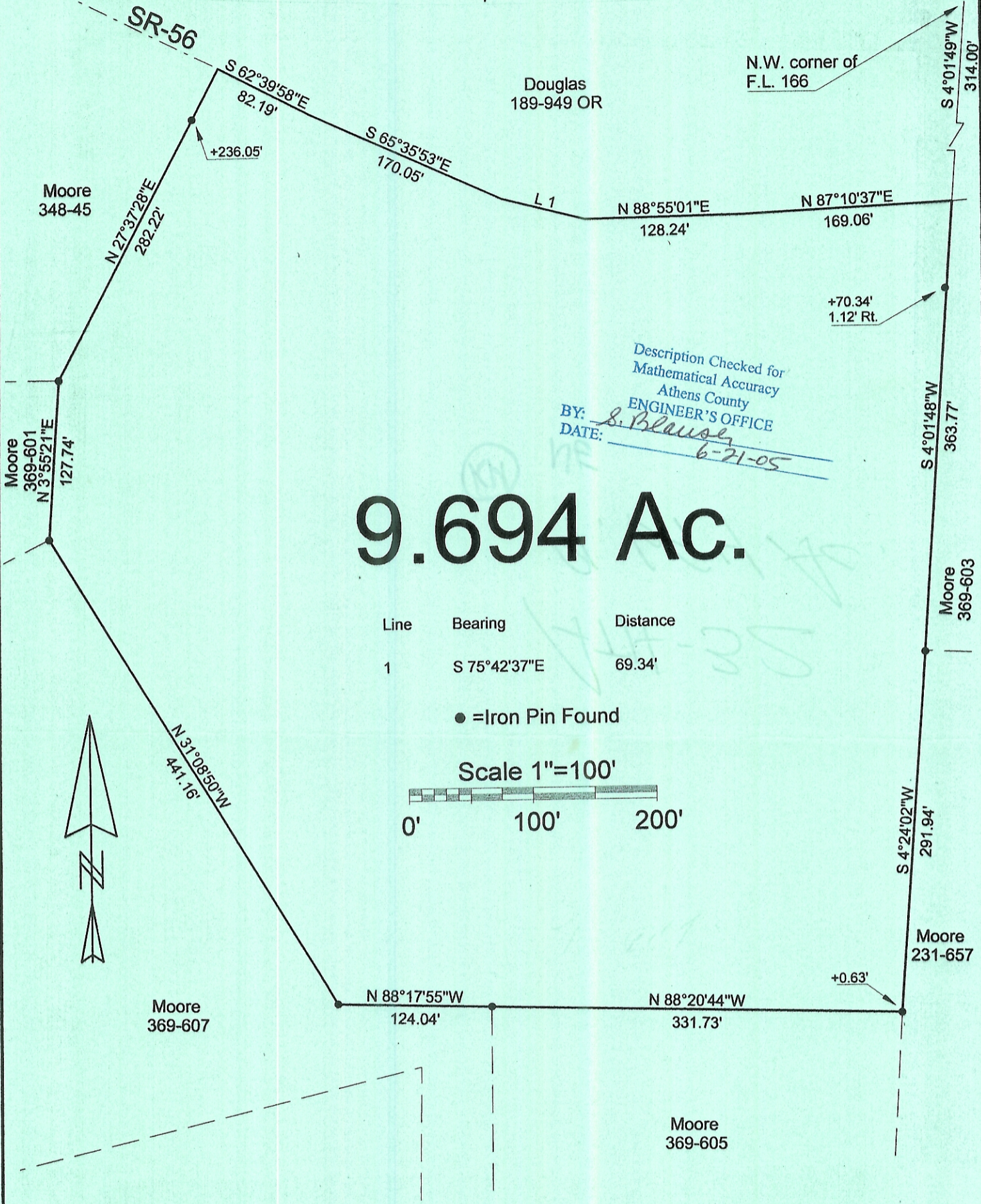


HIGHLAND SURVEYING Ltd.
Registered Professional Land Surveyor



Description Checked for
Mathematical Accuracy
Athens County
ENGINEER'S OFFICE
BY: S. Blausy
DATE: 6-21-05

9.694 Ac.

PLAT OF SURVEY OF A 9.694 Ac. TRACT

SURVEYED FOR MOORE

SUBDIVISION FARM LOT 166

TOWNSHIP ATHENS SECTION 32 TOWN 9 RANGE 14

CORPORATION - COUNTY ATHENS STATE OHIO

SCALE 1"= 100 DATE JUNE 2005

Kenneth E. Highland
80 Fayette St.
Nelsonville, Ohio 45764
740-753-1264



Kenneth E. Highland S-7581