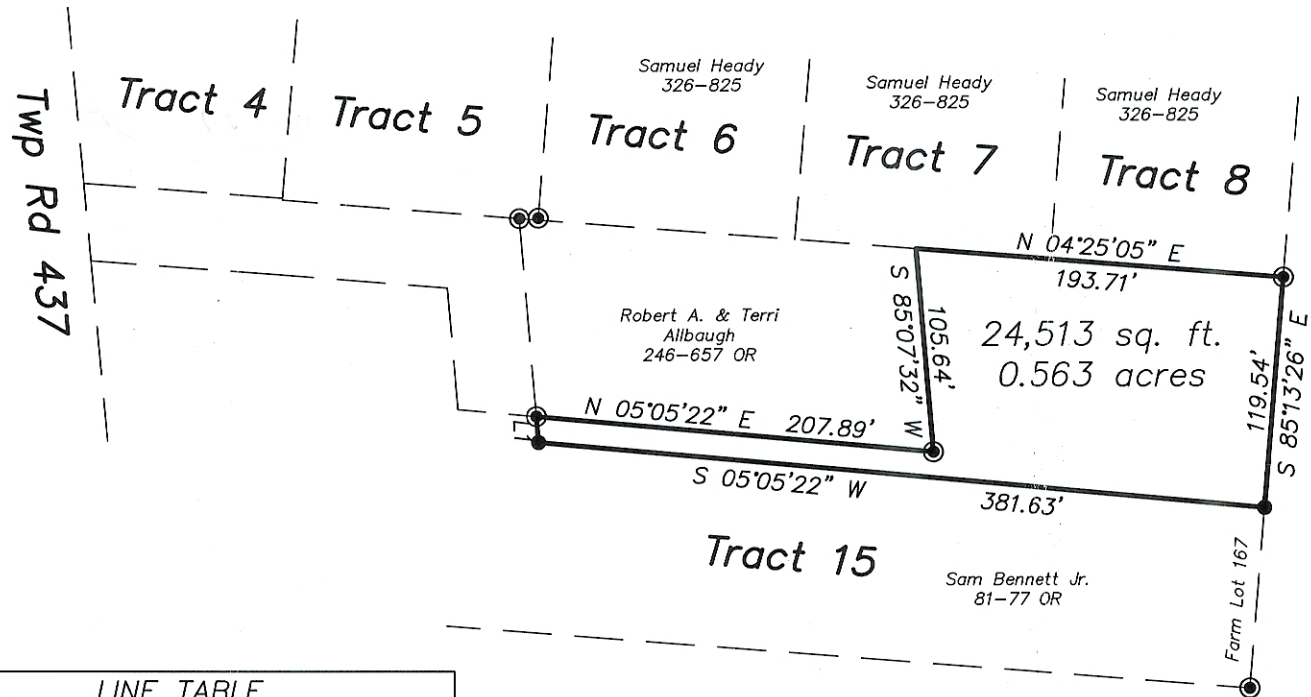


⊙ = Iron Pin Found

● = Iron Pin Set



Plat of Survey of 0.563 Acres
Situating in Farm Lot 167,
Section 33, Athens Township,
Athens County, Ohio in Tract 15,
Elmer Tom's Longview Addition
Surveyed June 2006 for:
Robert & Terri Allbaugh

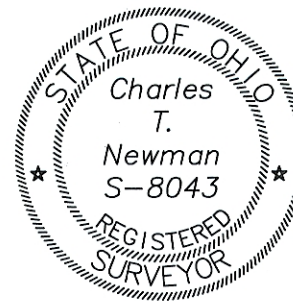
Charles T. Newman

Charles T. Newman

LINE TABLE		
LINE	LENGTH	BEARING
L1	13.42	S85°07'32"W

Description Checked for
Mathematical Accuracy
Athens County
ENGINEER'S OFFICE

BY: *K. Cantelero*
DATE: *7/3/06*



Member of Professional Land Surveyors of Ohio Land Surveys, Subdivisions



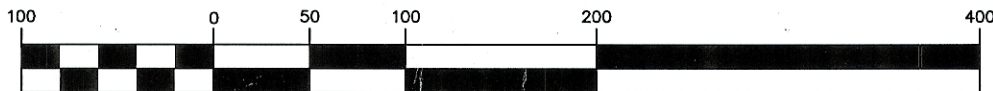
C. TIM NEWMAN

Professional Surveyor

66 Elmwood Place
Athens, Ohio 45701

740-594-1884
FAX 740-594-9413

GRAPHIC SCALE



(IN FEET)
1 inch = 100 ft.