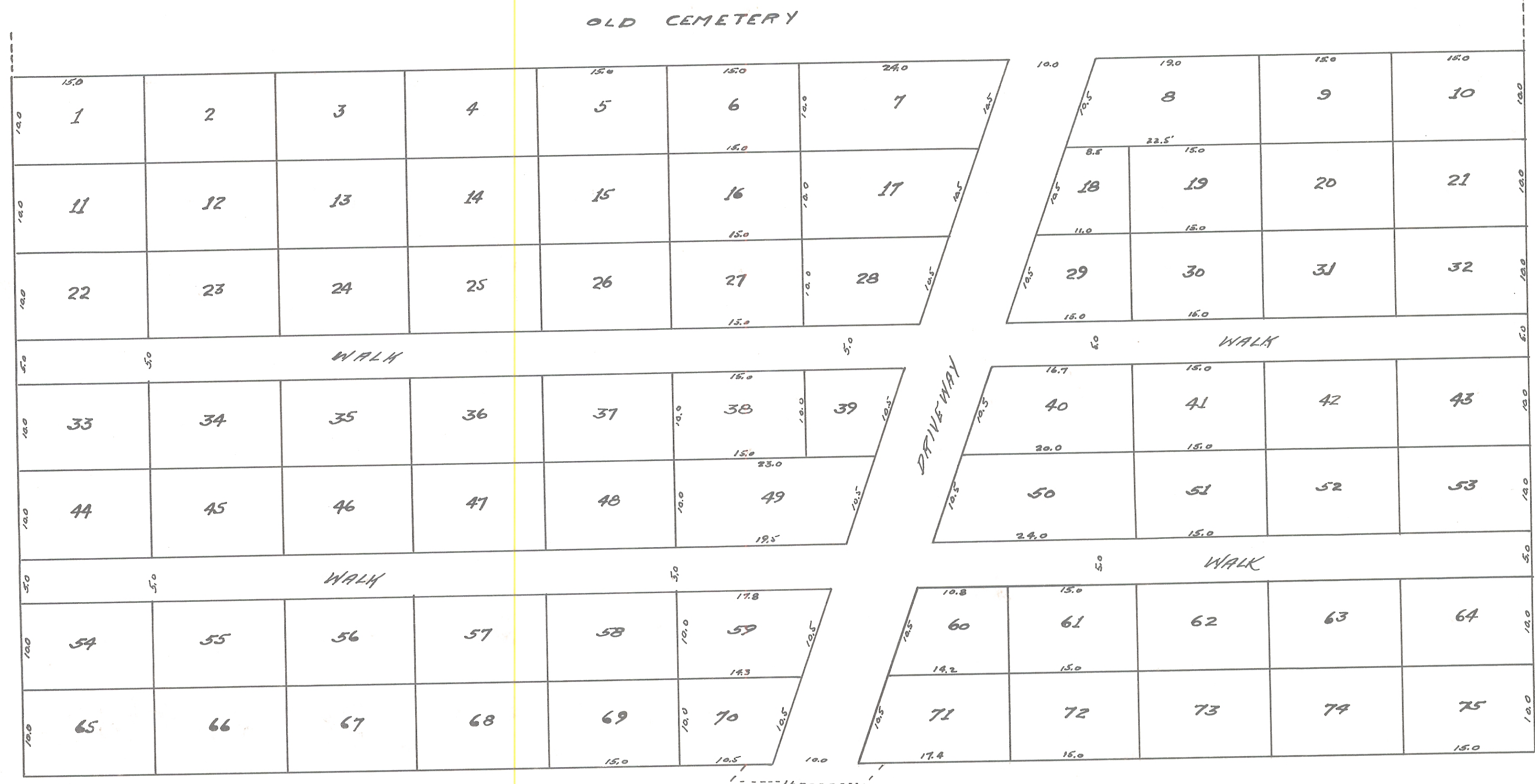


ENVELOPE: 295A
BURSON CEMETARY
SECTION 27
LODI TWP



SURVEYED AND PLATTED BY
Sept 25-26-1941 J.R. Sands
REG ENG
Scale 1in=10ft

No. 60521
Athens County Ohio
Received for Record 1:25 PM 1941
Recorded 1941
Book No 6 - Page 193
Claudio E. Chappel
Recorder
\$650

MAP
OF
FIRST ADDITION TO
BURSON CEMETERY
TOWN 4 SEC 27 RANGE 13
LODI TWP.
ATHENS COUNTY
OHIO