

**DESCRIPTION OF A 1.493 ACRE TRACT**

Situated in Section 17, T.7, R.12, Bern Township, Athens County, Ohio and being more particularly described as follows:

Beginning at a point in State Route 550, and being the south-east corner of a an existing cemetery said point bears approximately South 2650 feet and West, 630 feet from the North-east corner of Section 17;

Thence, along State Route 550 North 56 degrees 40 minutes 31 seconds West, 37.49 feet to a point;

Thence, leaving said road, North 06 degrees 02 minutes 44 seconds East, 324.03 feet to an iron pin set,, passing an iron pin set at 39.75 feet;

Thence, North 85 degrees 02 minutes 25 seconds West, 250.04 feet to an iron pin set;

Thence, North 06 degrees 02 minutes 24 seconds East, 196.71 feet to a point at the North-east corner of the Bern Township Trustees 3.24 acre tract ( 159-233);

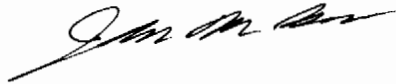
Thence, along the south-line of a 23.0 acre tract (35-691) South 81 degrees 25 minutes 57 seconds East, 286.37 feet to a fence corner at the North-east corner of a cemetery;

Thence, along an existing fence-line South 06 degrees 20 minutes 58 seconds West, 520.59 feet to a point in State Route 550 and being the point of beginning and containing 1.493 acres.

Subject to all easements and rights of way of record.

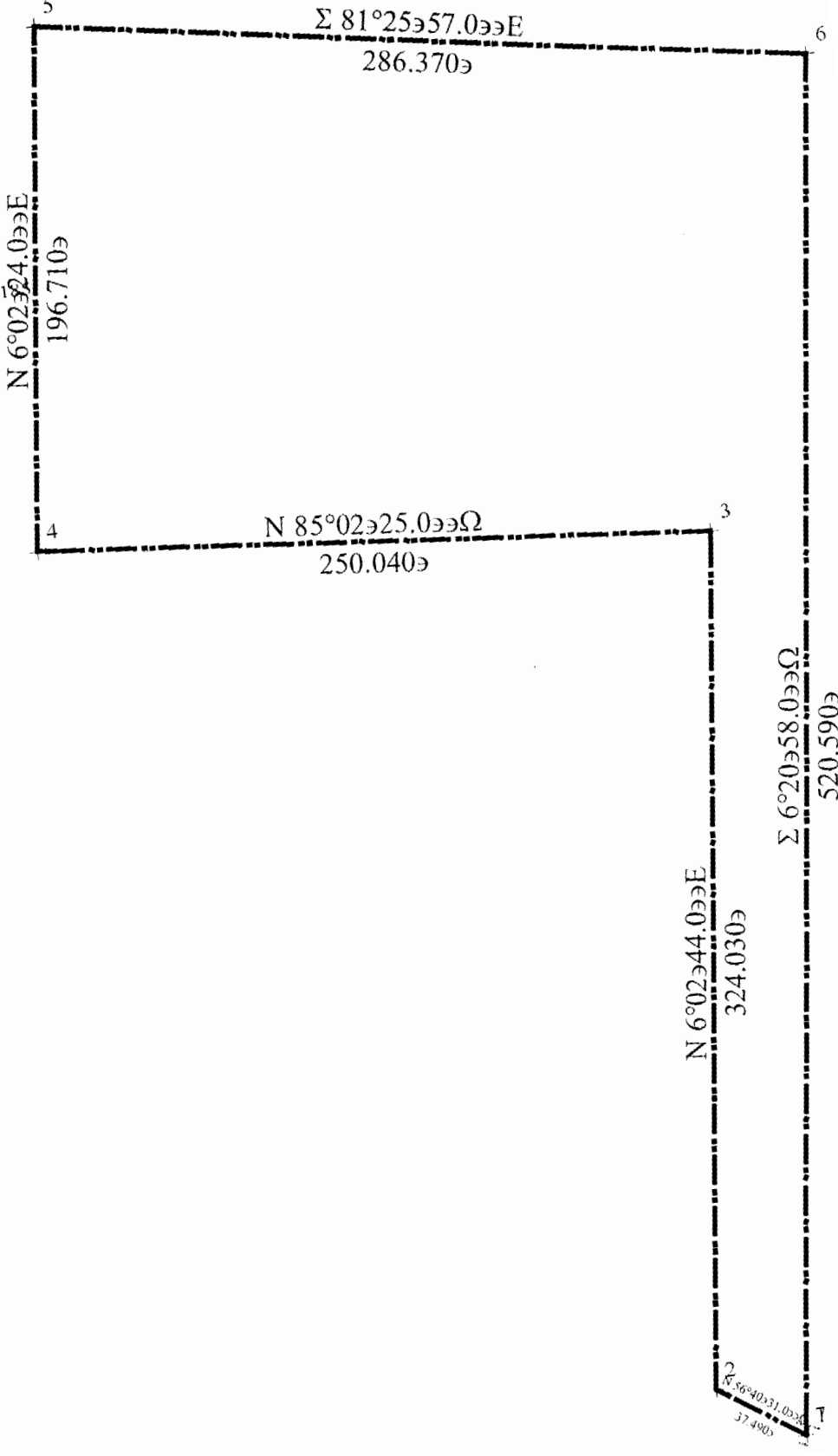
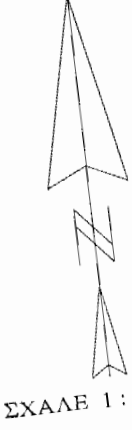
The above description is based on a field survey by John M.Branner P.S. 6805

The attached plat is to be considered an integral part of this description.



Description checked for  
Mathematical Accuracy  
ATHENS COUNTY  
ENGINEER'S OFFICE  
BY: S. Blausen  
DATE: 6-9-03

BRN #17



**DESCRIPTION OF A 1.502 ACRE TRACT**

Situated in Section 17, T.7, R.12, Bern Township, Athens County, Ohio and being more particularly described as follows:

Commencing at a point in State Route 550, and being the south-east corner of a an existing cemetery said point bears approximately South 2650 feet and West, 630 feet from the North-east corner of Section 17;

Thence, along State Route 550, North 56 degrees 40 minutes 31 seconds West, 37.49 feet to a point and being the point of beginning for the tract of land herein described:

Thence, along said road, North 56 degrees 40 minutes 31 seconds West, 155.92 feet to a point;

Thence, North 64 degrees 34 minutes 40 seconds West, 121.50 feet to a point;

Thence, leaving said road, North 06 degrees 50 minutes 37 seconds East, 42.15 feet to a concrete right of way monument, passing a concrete right of way marker at 31.78 feet;

Thence, South 87 degrees 09 minutes 23 seconds East, 2.64 feet to an iron pin set;

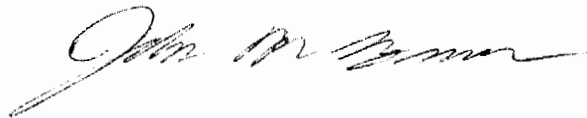
Thence, North 06 degrees 02 minutes 24 seconds East, 165.23 feet to an iron pin set;

Thence, South 85 degrees 02 minutes 25 seconds East, 250.04 feet to an iron pin set;

Thence, South 06 degrees 02 minutes 44 seconds West, 324.03 feet (passing an iron pin set at 284.28 feet) to the point of beginning and containing 1.502 acres.

Subject to all easements and rights of way of record.

G



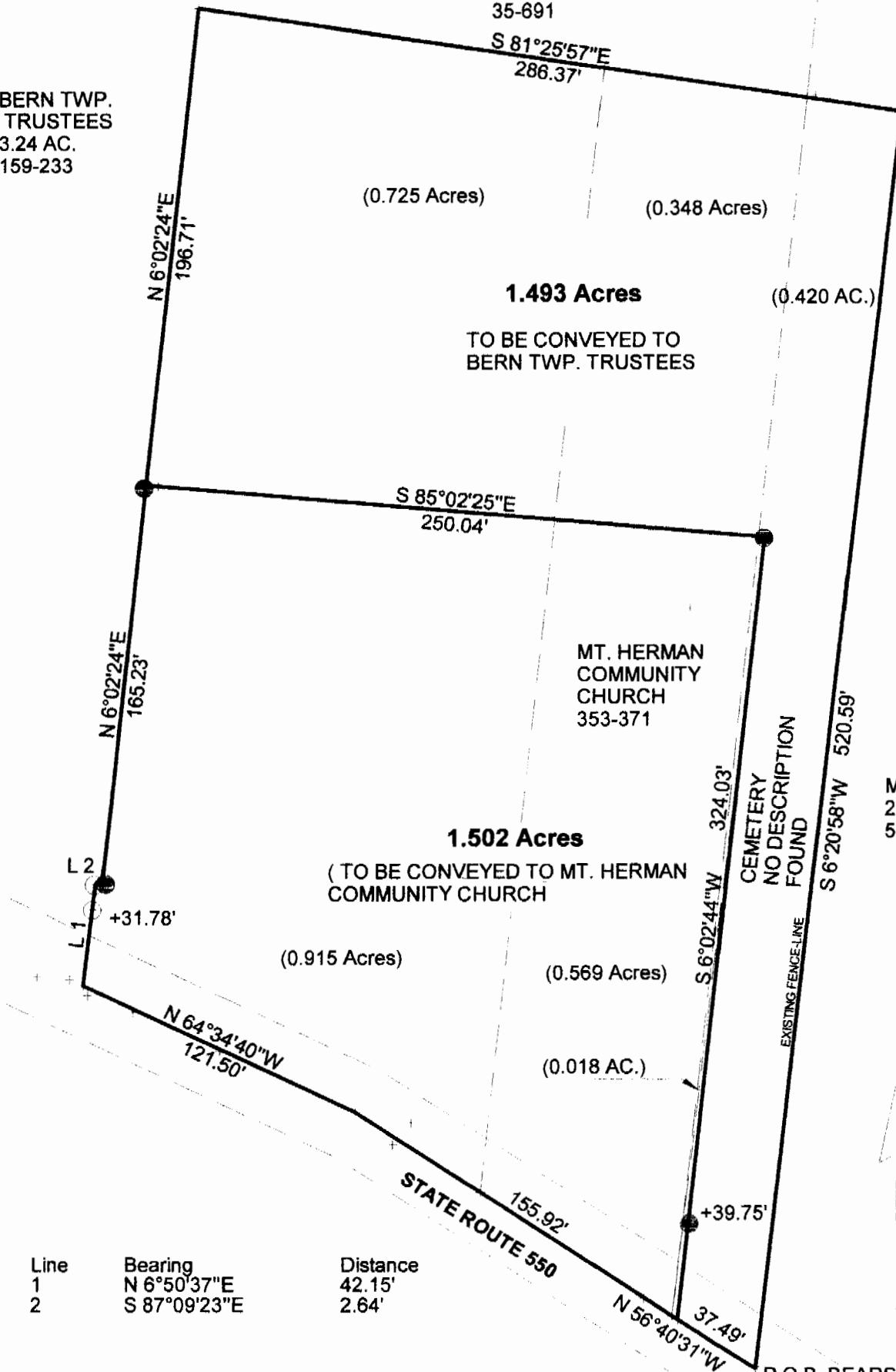
Description checked for  
Mathematical Accuracy  
ATHENS COUNTY  
TOWNSHIP CLERK'S OFFICE

BY: S. Blausen  
DATE: 6-9-03

BERN TWP.  
TRUSTEES  
3.24 AC.  
159-233

WILLIAMS  
23.0 AC.  
35-691

FENCE  
COR.



Line	Bearing	Distance
1	N 6°50'37"E	42.15'
2	S 87°09'23"E	2.64'



**SURVEY OF A 1.493 ACRE TRACT AND A 1.502 ACRE TRACT  
IN SECTION 17, T.7N,R.12W BERN TWP. ATHENS CO.O.**

P.O.B. BEARS  
SOUTH 2650'+/-  
WEST 630'+/-  
FROM N.E. COR  
OF SECTION 17

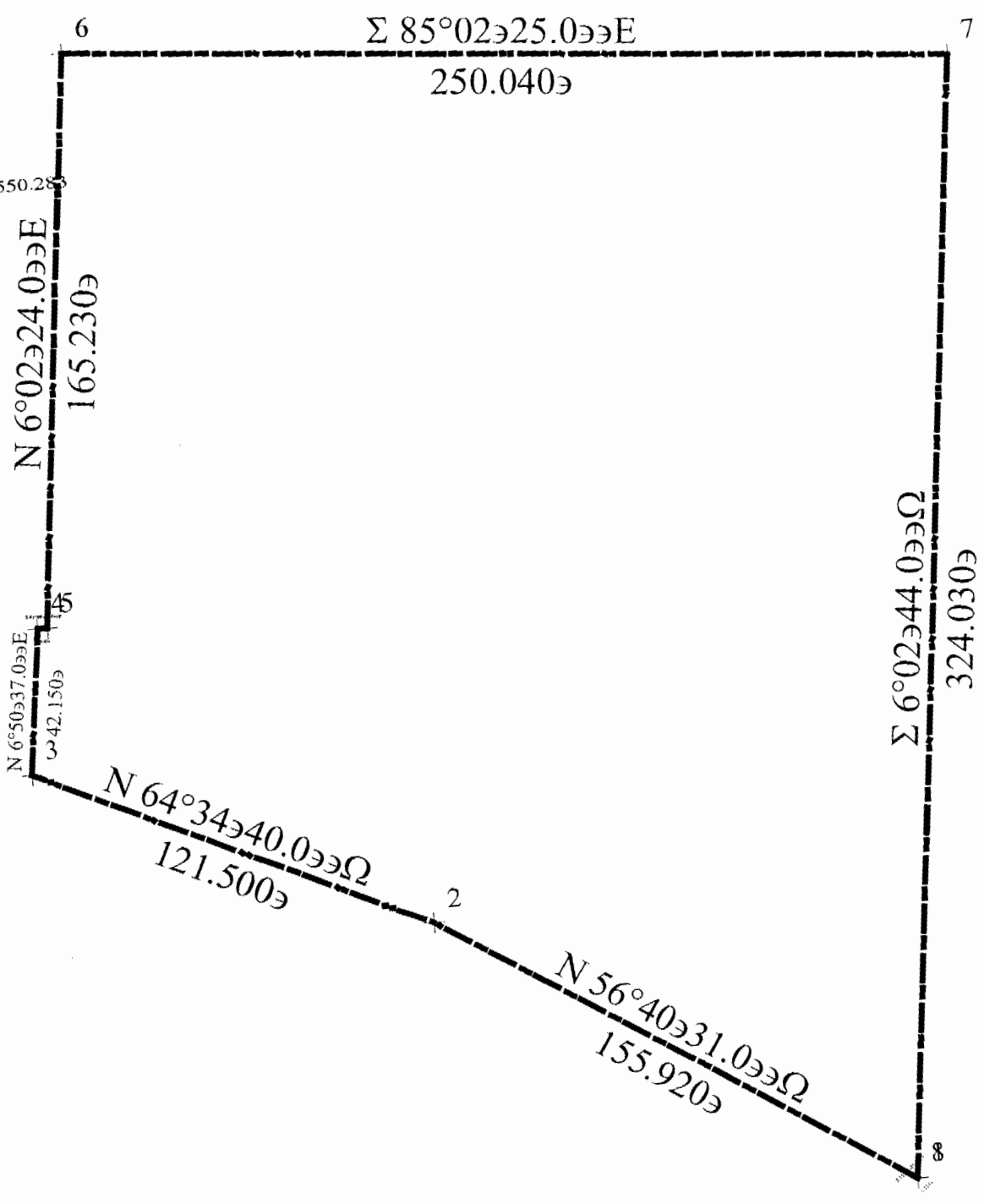
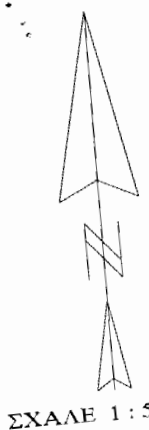
**SURVEYED JUNE 2003  
PREPARED BY THE ATHENS COUNTY ENGR DEPT.**

Description checked for  
Mathematical Accuracy  
ATHENS COUNTY  
ENGINEER'S OFFICE  
BY: *S. Blausey*  
DATE: *6-9-03*

*John M. Branner*  
**JOHN M. BRANNER P.S. 6805**



SCALE 1 INCH = 50 FEET  
 ● = IRON PIN SET  
 ○ = CONCRETE RIGHT OF WAY MONUMENT FOUND  
 BEARINGS BASED ON PREVIOUS SURVEYS  
 USED TO DENOTE INTERIOR ANGLES ONLY



Σ 85°02'25.0"E

250.040

N 6°02'24.0"E

165.230

N 6°50'37.0"E

42.150

N 64°34'40.0"Ω

121.500

N 56°40'31.0"Ω

155.920

Σ 6°02'44.0"Ω

324.030

ΣΧΑΛΕ 1 : 550.28