



# CANNON LAND SURVEYING

7945 TWP RD. 114 NE  
NEW LEXINGTON, OHIO 43764  
614-342-2835

## DEED DESCRIPTION

Situated in the State of Ohio, County of Athens, Township of Bern, T-7, R-12, being a part of Mark Howdysshell Trustee OR 203 Pg. 629, being part of Fractions 19 & 25, and more particularly described as follows:

Beginning at an iron pin found at the Southeast Corner of Fraction 32; thence South 28 Degrees 35 Minutes 40 Seconds East 2808.58 feet to a point in the Centerline of a 60 foot easement and the place of beginning; thence along said easement the next 15 courses to points: North 85 Degrees 29 Minutes 46 Seconds East 66.38 feet; thence South 85 Degrees 26 Minutes 59 Seconds East 134.25 feet; thence South 72 Degrees 25 Minutes 13 Seconds East 49.36 feet; thence South 50 Degrees 52 Minutes 20 Seconds East 109.84 feet; thence South 40 Degrees 47 Minutes 52 Seconds East 142.96 feet; thence South 27 Degrees 31 Minutes 12 Seconds East 72.26 feet; thence South 21 Degrees 45 Minutes 45 Seconds East 245.52 feet; thence South 31 Degrees 34 Minutes 32 seconds East 120.32 feet; thence South 56 Degrees 59 Minutes 31 Seconds East 83.95 feet; thence South 67 Degrees 00 Minutes 34 Seconds East 166.28 feet; thence South 71 Degrees 40 Minutes 58 Seconds East 129.00 feet; thence South 64 Degrees 38 Minutes 50 Seconds East 175.29 feet; thence South 65 Degrees 48 Minutes 26 Seconds East 148.42 feet; thence South 46 Degrees 51 Minutes 00 Seconds East 99.05 feet; thence South 29 Degrees 04 Minutes 01 Seconds East 4.63 feet; thence leaving said easement South 48 Degrees 10 Minutes 55 Seconds West 888.02 feet to a railroad spike in the centerline of St. Rt. 329, passing an iron pin set at 30.00 feet; thence along said centerline South 69 Degrees 23 Minutes 10 Seconds East 56.40 feet to a railroad spike set; thence leaving said centerline South 48 Degrees 10 Minutes 55 Seconds West 154.43 feet to a point in the center of Federal Creek, passing an iron pin set at 40.00 feet; thence along said creek the next 9 courses to points: South 88 Degrees 35 Minutes 01 Seconds West 204.38 feet; thence South 78 Degrees 26 Minutes 43 Seconds West 568.73 feet; thence South 73 Degrees 19 Minutes 13 Seconds West 578.66 feet; thence South 89 Degrees 15 Minutes 59 Seconds West 149.01 feet; thence North 62 Degrees 31 Minutes 24 Seconds West 207.90 feet; thence North 47 Degrees 49 Minutes 46 Seconds West 188.94 feet; thence North 19 Degrees 31 Minutes 50 Seconds West 119.32 feet; thence North 09 Degrees 10 Minutes 44 Seconds West 81.03 feet; thence North 07 Degrees 42 Minutes 33 Seconds West 800.32 feet; thence leaving said creek North 59 Degrees 10 Minutes 44 Seconds East 172.48 feet to a railroad spike set in the centerline of St. Rt. 329, passing an iron pin set at 142.48 feet; thence along said centerline South 17 Degrees 19 Minutes 55 Seconds East 51.42 feet to a railroad spike set; thence leaving said road North 59 Degrees 10 Minutes 44 Seconds East 1377.35 feet to the place of beginning, passing an iron pin set at 1337.35 feet, containing 73.57 acres total, being 22.01 acres in Fraction 25 & 51.56 acres in Fraction 19, more or less, subject to all legal highways and easements.

Description checked for  
Mathematical Accuracy  
ATHENS COUNTY  
ENGINEER'S OFFICE

BY: S. Blause  
DATE: 5-3-2000

000010

BRN# 20



# CANNON LAND SURVEYING

7945 TWP RD. 114 NE  
NEW LEXINGTON, OHIO 43764  
614-342-2835

See plat attached.

Subject to St. Rt. 329 R/W.

Iron pins set are 5/8 inch rebar with plastic identification caps.

Bearings are based on the South Line of Fraction 32 as being South 89 Degrees 14 Minutes 58 Seconds West.

This description was written from a survey made by Kevin Cannon 7224, April 26, 2000.

    /    

Kevin Cannon  
Reg. No. 7224

    4/26/00      
Date



000011

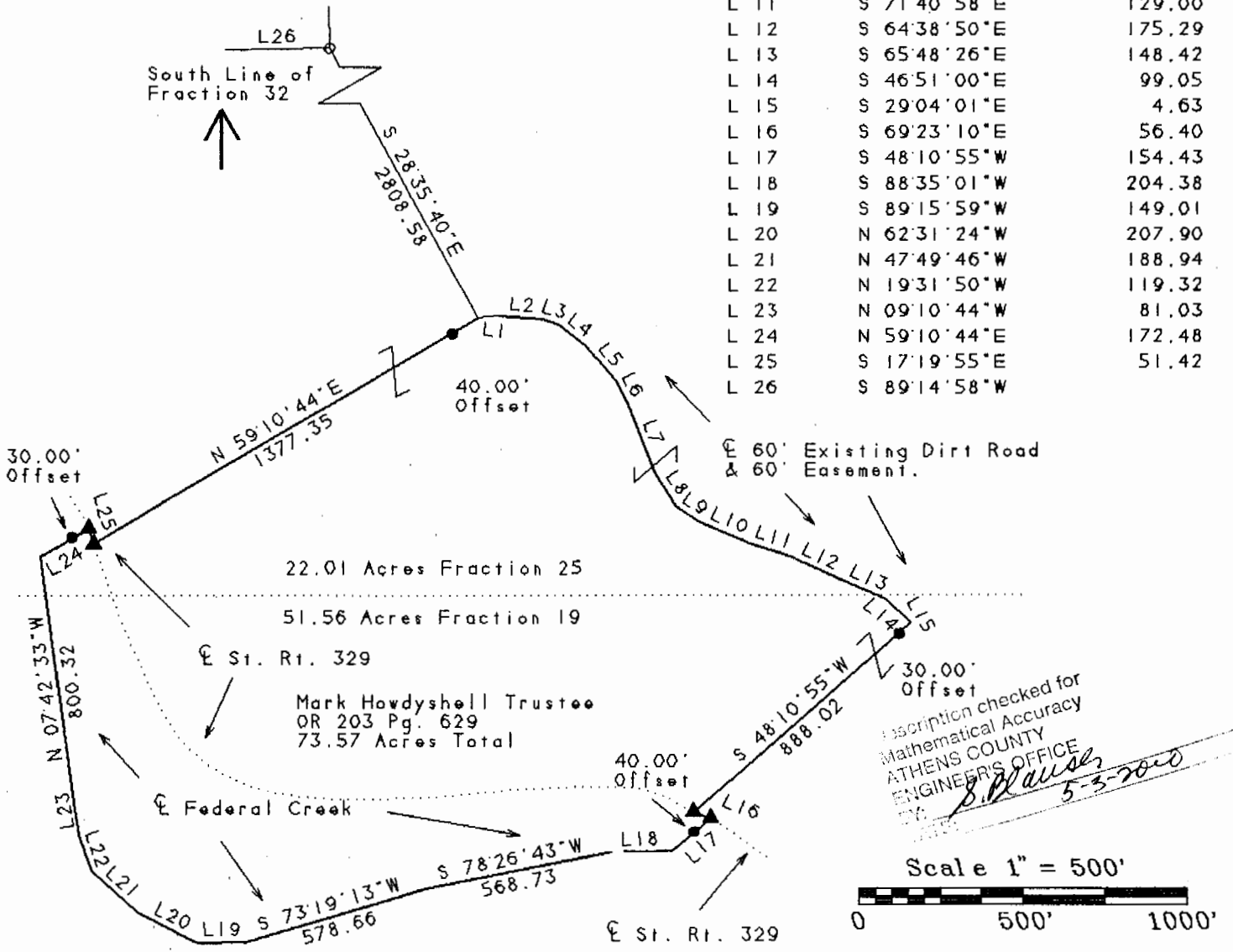
# N Cannon Land Surveying

Bearings Shown Hereon are to an Assumed Meridian and Are Used to Denote Angles Only.  
 Data References: U.S.G.S. Maps, Tax Maps, Deed Descriptions, and Existing Monumentation.

This Survey is Subject to any Facts That May be Disclosed by a Full and Accurate Title Search.

7945 Twp. Rd. 114 NE  
 New Lexington, Ohio 43764  
 (614) 342-2835

LINE	BEARING	DISTANCE
L 1	N 85°29'46"E	66.38
L 2	S 85°26'59"E	134.25
L 3	S 72°25'13"E	49.36
L 4	S 50°52'20"E	109.84
L 5	S 40°47'52"E	142.96
L 6	S 27°31'12"E	72.26
L 7	S 21°45'45"E	245.52
L 8	S 31°34'32"E	120.32
L 9	S 56°59'31"E	83.95
L 10	S 67°00'34"E	166.28
L 11	S 71°40'58"E	129.00
L 12	S 64°38'50"E	175.29
L 13	S 65°48'26"E	148.42
L 14	S 46°51'00"E	99.05
L 15	S 29°04'01"E	4.63
L 16	S 69°23'10"E	56.40
L 17	S 48°10'55"W	154.43
L 18	S 88°35'01"W	204.38
L 19	S 89°15'59"W	149.01
L 20	N 62°31'24"W	207.90
L 21	N 47°49'46"W	188.94
L 22	N 19°31'50"W	119.32
L 23	N 09°10'44"W	81.03
L 24	N 59°10'44"E	172.48
L 25	S 17°19'55"E	51.42
L 26	S 89°14'58"W	



Ginevra G. Tidman  
 Vol. 253 Pg. 405  
 Vol. 367 Pg. 1055

Kevin Cannon  
 Reg. # 7224

4/26/00  
 Date

Survey For: Paul Oberhauser  
 State: Ohio  
 County: Athens  
 Township: Bern  
 T- 7 R- 12 Lot: N/A  
 Section: Fractions 25 & 31  
 City or Village: N/A  
 Subdivision: N/A  
 Parcel #: N/A



## Legend

- Iron Pin Set
- 5/8" Rebar W/Cap
- Iron Pin Found
- ⊗ Post
- ▲ R.R. Spike Set
- △ R.R. Spike Found
- ⊙ Drilled Hole 5/8"
- Stone Found
- PK Nail Set
- ⊙ PK Nail Found
- \*-\* Fence
- ➔ Basis Of Bearings

000012