



CANNON LAND SURVEYING

7945 TWP RD. 114 NE
 NEW LEXINGTON, OHIO 43764
 614-342-2835

DEED DESCRIPTION *52.57*

- Situated in the State of Ohio, County of Athens, Township of Bern, T-7, R-12, being a part of Mark Howdyshell Trustee OR 203 Pg. 629, being part of Fractions 30 & 31, and more particularly described as follows:

Beginning at a stone at the Northwest Corner of Fraction 30; thence South 31 Degrees 23 Minutes 53 Seconds East 1257.63 feet to a point in the centerline of Twp. Rd. 201 and the place of beginning; thence South 87 Degrees 32 Minutes 57 Seconds East 198.97 feet to a point; thence South 58 Degrees 08 Minutes 48 Seconds East 217.59 feet to a point; thence South 46 Degrees 59 Minutes 52 Seconds East 380.74 feet to a point; thence South 79 Degrees 10 Minutes 57 Seconds East 245.87 feet to a point; thence South 61 Degrees 41 Minutes 30 Seconds East 83.04 feet to a point; thence South 60 Degrees 13 Minutes 47 Seconds East 153.38 feet to a point; thence South 73 Degrees 06 Minutes 37 Seconds East 149.27 feet to a point; thence South 85 Degrees 55 Minutes 51 Seconds East 276.68 feet to a point; thence South 47 Degrees 58 Minutes 17 Seconds East 296.67 feet to a point; thence South 24 Degrees 01 Minutes 43 Seconds East 203.90 feet to a point; thence South 37 Degrees 30 Minutes 27 Seconds East 110.07 feet to a point; thence South 58 Degrees 10 Minutes 11 Seconds East 102.92 feet to a point; thence South 70 Degrees 36 Minutes 34 Seconds East 248.90 feet to a point; thence South 71 Degrees 49 Minutes 59 Seconds East 198.76 feet to a point; thence South 52 Degrees 21 Minutes 15 Seconds East 63.30 feet to a point; thence South 42 Degrees 04 Minutes 59 Seconds West 1702.03 feet to a point, passing an iron pin set at 1682.33 feet; thence along a dirt road the next 11 courses: North 66 Degrees 17 Minutes 23 Seconds West 89.30 feet to a point; thence North 42 Degrees 09 Minutes 25 Seconds West 57.01 feet to a point; thence North 28 Degrees 35 Minutes 28 Seconds West 232.80 feet to a point; thence North 24 Degrees 42 Minutes 19 Seconds West 95.67 feet to a point; thence North 11 Degrees 11 Minutes 18 Seconds West 127.12 feet to a point; thence North 08 Degrees 59 Minutes 34 Seconds West 108.70 feet to a point; thence North 29 Degrees 59 Minutes 04 Seconds West 74.07 feet to a point; thence North 44 Degrees 19 Minutes 12 Seconds West 125.83 feet to a point; thence North 38 Degrees 08 Minutes 22 Seconds West 191.42 feet to a point; thence North 27 Degrees 58 Minutes 43 Seconds West 161.15 feet to a point; thence North 41 Degrees 15 Minutes 14 Seconds West 281.75 feet to a point; thence North 09 Degrees 41 Minutes 51 Seconds East 890.92 feet to a point; thence North 46 Degrees 59 Minutes 52 Seconds West 408.71 feet to a point; thence North 58 Degrees 08 Minutes 48 Seconds West 199.59 feet to a point; thence North 87 Degrees 32 Minutes 57 Seconds West 189.15 feet to a point in the centerline of Twp. Rd. 201; thence along said centerline North 06 Degrees 13 Minutes 25 Seconds East 50.11 feet to the place of beginning, containing 52.57 acres total, being 8.81 acres in Fr. 31 & 43.76 acres in Fr. 30, more or less, subject to all legal highways and easements.

Description checked for
 Mathematical Accuracy
 ATHENS COUNTY
 ENGINEER'S OFFICE
 BY: *S. Blausen*
 DATE: 8-27-99

BRN# 21

40



CANNON LAND SURVEYING

7945 TWP RD. 114 NE
NEW LEXINGTON, OHIO 43764
614-342-2835

See plat attached.

Subject to Twp. Rd. 201 R/W.

Iron pins set are 5/8 inch rebar with plastic identification caps.

Bearings are based on the West Line of Fraction 30 as being South 00 Degrees 29 Minutes 20 Seconds West.

This description was written from a survey made by Kevin Cannon 7224, June 3, 1999.

Kevin Cannon
Reg. No. 7224

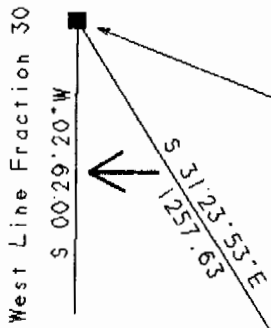
6/3/99
Date



N

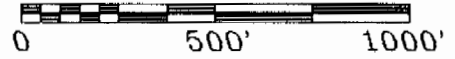
Cannon Land Surveying

7945 Twp. Rd. 114 NE
New Lexington, Ohio 43764
(614) 342-2835



N/W Corner of Fraction 30

Scale 1" = 500'



E Twp. Rd. 201

E Dirt Road

E Dirt Road

N 09°41'51"E
890.92

23.68' Offset

Mark Howdyshell Trustee
OR 203 Pg. 629
52.57 Acres Total

43.76 Acres

8.81 Acres

FR 30

FR 31

E Dirt Road

19.70' Offset



LINE	BEARING	DISTANCE
L 1	S 87°32'57"E	198.97
L 2	S 58°08'48"E	217.59
L 3	S 46°59'52"E	380.74
L 4	S 79°10'57"E	245.87
L 5	S 61°41'30"E	83.04
L 6	S 60°13'47"E	153.38
L 7	S 73°06'37"E	149.27
L 8	S 85°55'51"E	276.68
L 9	S 47°58'17"E	296.67
L 10	S 24°01'43"E	203.90
L 11	S 37°30'27"E	110.07
L 12	S 58°10'11"E	102.92
L 13	S 70°36'34"E	248.90
L 14	S 71°49'59"E	198.76
L 15	S 52°21'15"E	63.30
L 16	N 66°17'23"W	89.30
L 17	N 42°09'25"W	57.01
L 18	N 28°35'28"W	232.80
L 19	N 24°42'19"W	95.67
L 20	N 11°11'18"W	127.12
L 21	N 08°59'34"W	108.70
L 22	N 44°19'12"W	125.83
L 23	N 38°08'22"W	191.42
L 24	N 27°58'43"W	161.15
L 25	N 41°15'14"W	281.75
L 26	N 46°59'52"W	408.71
L 27	N 58°08'48"W	199.59
L 28	N 87°32'57"W	189.15
L 29	N 06°13'25"E	50.11
L 30	N 29°59'04"W	74.07

Bearings Shown Hereon are to an Assumed Meridian and Are Used to Denote Angles Only.

Data References: U.S.G.S. Maps, Tax Maps, Deed Descriptions, and Existing Monumentation.

This Survey is Subject to any Facts That May be Disclosed by a Full and Accurate Title Search.

Legend

- Iron Pin Set
- 5/8" Rebar W/Cap
- Iron Pin Found
- ⊗ Post
- ▲ R.R. Spike Set
- △ R.R. Spike Found
- ⊙ Drilled Hole 5/8"
- Stone Found
- PK Nail Set
- ⊙ PK Nail Found
- *-* Fence
- ➔ Basis Of Bearings

Kevin Cannon
Kevin Cannon
Reg. # 7224

6/3/99
Date

Description checked for
Mathematical Accuracy
ATHENS COUNTY
ENGINEER'S OFFICE
BY: *S. Blaus*
DATE: *8-27-99*

Survey For: Paul oberhauser
State: Ohio
County: Athens
Township: Bern
T- 7 R- 12 Lot: N/A
Section: Fractions 30 & 31
City or Village: N/A
Subdivision: N/A
Parcel #: N/A

44