



# CANNON LAND SURVEYING

7945 TWP RD. 114 NE  
NEW LEXINGTON, OHIO 43764  
614-342-2835

Deed Description

*64.79 acres*

Situated in the State of Ohio, County of Athens, Township of Bern, T-7, R-12, being a part of Federal Valley Coal Vol.268 Pg.242, being part of Section 7, and more particularly described as follows:

(Tract 3) Beginning at an iron pin found at the Northwest corner of Section 7; thence South 56 Degrees 52 Minutes 28 Seconds East 1145.41 feet to a point in the centerline of County Road 38 and the place of beginning; thence leaving said centerline South 03 Degrees 51 Minutes 45 Seconds West 412.73 feet to an iron pin set, passing an iron pin set at 55.82 feet; thence South 39 Degrees 13 Minutes 31 Seconds East 366.25 feet to an iron pin set; thence South 18 Degrees 12 Minutes 55 Seconds East 436.16 feet to an iron pin set; thence South 76 Degrees 42 Minutes 36 Seconds East 324.31 feet to an iron pin set; thence South 66 Degrees 36 Minutes 54 Seconds East 193.33 feet to an iron pin set; thence South 83 Degrees 56 Minutes 40 Seconds East 265.34 feet to a point in the centerline of Township Road 190 passing an iron pin set at 259.12 feet; thence with said centerline the following 8 courses to points: South 00 Degrees 34 Minutes 34 Seconds East 246.54 feet; thence South 06 Degrees 05 Minutes 24 Seconds East 82.53 feet; thence South 01 Degrees 11 Minutes 57 Seconds East 213.83 feet; thence South 01 Degrees 44 Minutes 21 Seconds West 189.66 feet; thence South 22 Degrees 35 Minutes 57 Seconds West 103.43 feet; thence South 04 Degrees 22 Minutes 58 Seconds West 123.81 feet; thence South 22 Degrees 12 Minutes 42 Seconds West 204.03 feet; thence South 01 Degrees 41 Minutes 28 Seconds East 144.80 feet; thence continuing with the centerline of Township Road 190 the following 8 courses to points: South 12 Degrees 08 Minutes 39 Seconds East 128.25 feet; thence South 16 Degrees 59 Minutes 33 Seconds West 169.88 feet; thence South 31 Degrees 00 Minutes 19 Seconds West 76.49 feet; thence South 08 Degrees 15 Minutes 35 Seconds West 171.86 feet; thence South 19 Degrees 23 Minutes 38 Seconds East 99.12 feet; thence South 02 Degrees 03 Minutes 54 Seconds East 104.47 feet; thence South 21 Degrees 01 Minutes 37 Seconds East 191.07 feet; thence South 32 Degrees 20 Minutes 40 Seconds East 194.21 feet; thence leaving said centerline North 77 Degrees 28 Minutes 31 Seconds West 164.68 feet to an iron pin set, passing an iron pin set at 26.80 feet; thence North 51 Degrees 47 Minutes 43 Seconds West 165.31 feet to an iron pin set; thence South 83 Degrees 06 Minutes 09 Seconds West 184.56 feet; thence South 82 Degrees 19 Minutes 12 Seconds West 306.86 feet to an iron pin set; thence North 64 Degrees 54 Minutes 53 Seconds West 316.05 feet; thence North 43 Degrees 52 Minutes 00 Seconds West 398.76 feet to an iron pin set; thence North 11 Degrees 59 Minutes 41 Seconds East 226.89 feet to an iron pin set; thence North 29 Degrees 42 Minutes 14 Seconds East 180.29 feet to a point; thence North 22 Degrees 53 Minutes 07 Seconds East 101.91 feet to a point with a reference pin located at South 89 Degrees 42 Minutes 16 Seconds West 30.22 feet; thence North 16 Degrees 22 Minutes 44 Seconds West 53.49 feet to a point; thence North 50 Degrees 29 Minutes 00 Seconds West 53.09 feet to a point; thence North 04 Degrees 46 Minutes 53 Seconds West 182.49 feet to a point; thence North 05 Degrees 22 Minutes 31 Seconds East 362.66 feet to a point; thence North 15 Degrees 38 Minutes 21 Seconds East 58.56 feet to a point; thence North 35 Degrees 43 Minutes 06 Seconds East 135.67 feet to a point; thence North 14 Degrees 47 Minutes 22 Seconds East 134.39 feet to a point; thence North 06 Degrees 14 Minutes 17 Seconds East 118.97 feet to a point; thence North 00 Degrees 04 Minutes 37 Seconds West 156.37 feet to a point; thence North 15 Degrees 38 Minutes 40 Seconds West 126.19 feet; thence North 21 Degrees 43 Minutes 34 Seconds West 171.25 feet to a point; thence North 17 Degrees 46 Minutes 02

PER#-7

50



# CANNON LAND SURVEYING

7945 TWP RD. 114 NE  
 NEW LEXINGTON, OHIO 43764  
 614-342-2835

Seconds West 245.21 feet to a point; thence North 00 Degrees 49 Minutes 45 Seconds East 62.55 feet to a point; thence North 17 Degrees 30 Minutes 47 Seconds East 97.42 feet to a point; thence North 10 Degrees 26 Minutes 23 Seconds East 85.28 feet to a point; thence North 04 Degrees 14 Minutes 27 Seconds East 101.58 feet to a point; thence North 09 Degrees 55 Minutes 59 Seconds West 179.78 feet to an iron pin set; thence North 01 Degrees 21 Minutes 48 Seconds West 324.17 feet to a point in the centerline of County Road 38 passing an iron pin set at 288.54 feet; thence with said centerline North 44 Degrees 05 Minutes 33 Seconds East 158.30 feet and the place of beginning containing 64.79 acres, more or less, subject to all legal Highways and easements.

Also a 40 foot easement being 20 feet on each side of the following described centerline; beginning at an iron pin found at the Northwest corner of Section 7; thence South 56 Degrees 52 Minutes 28 Seconds East 1145.41 feet to a point in the centerline of County Road 38; thence with the centerline of County Road 38 South 44 Degrees 05 Minutes 33 Seconds West 91.29 to the place of beginning; thence leaving said centerline South 10 Degrees 00 Minutes 23 Seconds East 545.19 feet to a point; thence the following 15 courses to points: South 10 Degrees 26 Minutes 23 Seconds West 85.28 feet; thence South 17 Degrees 30 Minutes 47 Seconds West 97.42 feet; thence South 00 Degrees 39 Minutes 45 Seconds West 62.55 feet; thence South 17 Degrees 46 Minutes 02 Seconds East 245.21 feet; thence South 21 Degrees 43 Minutes 34 Seconds East 171.25 feet; thence South 15 Degrees 38 Minutes 40 Seconds East 126.19 feet; thence South 00 Degrees 04 Minutes 37 Seconds East 156.37 feet; thence South 06 Degrees 12 Minutes 17 Seconds West 118.97 feet; thence South 14 Degrees 47 Minutes 22 Seconds West 134.39 feet; thence South 35 Degrees 43 Minutes 06 Seconds West 135.67 feet; thence South 15 Degrees 38 Minutes 21 Seconds West 58.56 feet; thence South 05 Degrees 22 Minutes 31 Seconds West 362.66 feet; thence South 04 Degrees 46 Minutes 53 Seconds East 182.49 feet; thence South 50 Degrees 29 Minutes 00 Seconds East 53.09 feet; thence South 16 Degrees 22 Minutes 44 Seconds East 53.49 feet with a reference pin located at South 89 Degrees 49 Minutes 16 Seconds West 30.22 feet.

See plat attached.

Subject to the R/W of County Road 38 and Township Road 190.

Iron pins set are 5/8 inch rebar with plastic identification caps.

Bearings are based on the West Line of Section 7 as being South 00 Degrees 10 Minutes 44 Seconds East.

This description was written from a survey made May 17, 1996.

Kevin Cannon  
 Kevin Cannon  
 Reg. No. 7224

5/17/96  
 Date

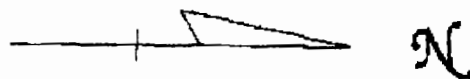


Description checked for  
 Mathematical Accuracy  
 ATHENS COUNTY  
 ENGINEER'S OFFICE  
 BY: S. Blausen  
 DATE: 6-28-96

51

# Cannon Land Surveying

1945 Twp. Rd. 114 NE  
New Lexington, Ohio 43764  
(614) 842-2835

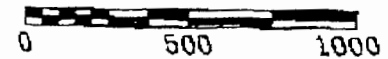


Bearings Shown Hereon are to an Assumed Meridian and Are Used to Denote Angles Only.

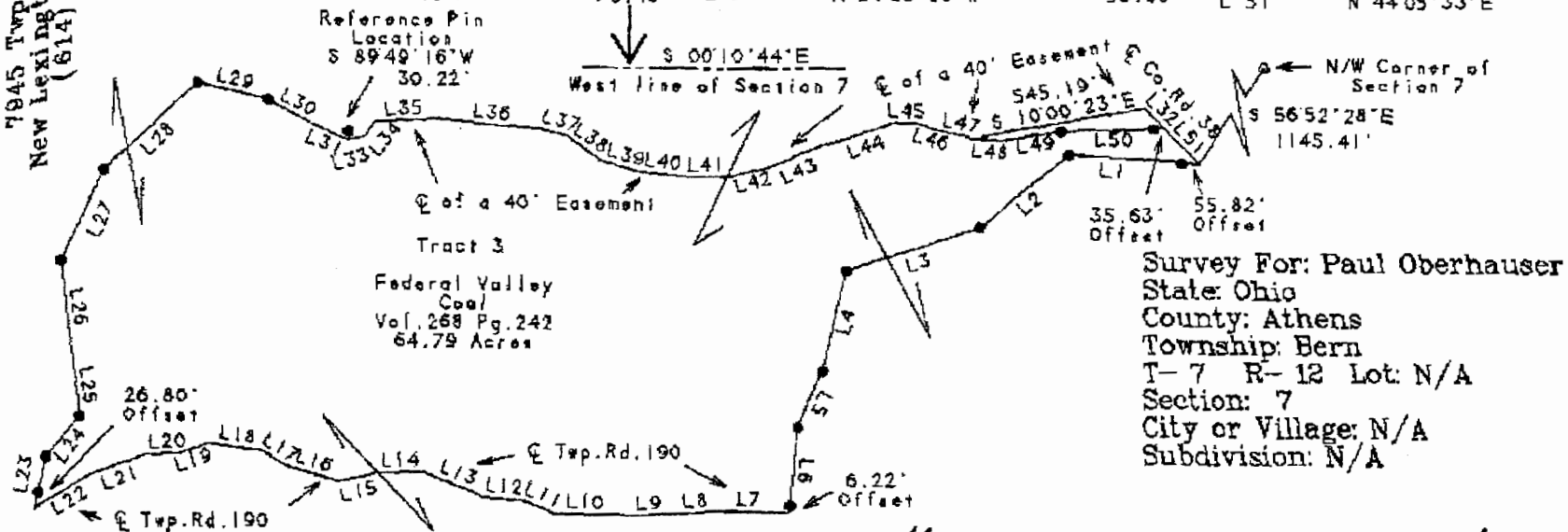
Data References: U.S.G.S. Maps, Tax Maps, Deed Descriptions, and Existing Monumentation.

This Survey is Subject to any Facts That May be Disclosed by a Full and Accurate Title Search.

Scale 1" = 500'



LINE	BEARING	DISTANCE	LINE	BEARING	DISTANCE	LINE	BEARING	DISTANCE
L 1	S 03°51'45"W	412.73'	L 18	S 08°15'35"W	171.86'	L 35	N 04°46'53"W	182.49'
L 2	S 39°13'31"E	366.25'	L 19	S 19°23'38"E	99.12'	L 36	N 05°22'31"E	362.66'
L 3	S 18°12'55"E	436.16'	L 20	S 02°03'54"E	104.47'	L 37	N 15°38'21"E	58.56'
L 4	S 76°42'36"E	324.31'	L 21	S 21°01'37"E	191.07'	L 38	N 35°43'08"E	135.67'
L 5	S 66°36'54"E	193.33'	L 22	S 32°20'40"E	194.21'	L 39	N 14°47'22"E	134.39'
L 6	S 83°56'40"E	265.34'	L 23	N 77°28'31"W	164.68'	L 40	N 06°12'17"E	118.97'
L 7	S 00°34'34"E	246.54'	L 24	N 51°47'43"W	165.31'	L 41	N 00°04'37"W	156.37'
L 8	S 06°05'24"E	82.53'	L 25	S 83°06'09"W	184.56'	L 42	N 15°38'40"W	126.19'
L 9	S 01°11'57"E	213.83'	L 26	S 82°19'12"W	306.86'	L 43	N 21°43'34"W	171.25'
L 10	S 01°44'21"W	189.66'	L 27	N 64°54'53"W	316.05'	L 44	N 17°46'02"W	245.21'
L 11	S 22°35'57"W	103.43'	L 28	N 43°52'00"W	398.76'	L 45	N 00°49'45"E	62.55'
L 12	S 04°22'58"W	123.81'	L 29	N 11°59'41"E	226.89'	L 46	N 17°30'47"E	97.42'
L 13	S 22°12'42"W	204.03'	L 30	N 29°42'14"E	180.29'	L 47	N 10°26'23"E	85.28'
L 14	S 01°41'28"E	144.80'	L 31	N 22°53'07"E	101.91'	L 48	N 04°14'27"E	101.58'
L 15	S 12°08'39"E	128.25'	L 32	S 44°05'33"W	91.29'	L 49	N 09°55'59"W	179.78'
L 16	S 16°59'33"W	169.88'	L 33	N 16°22'44"W	53.49'	L 50	N 01°21'48"W	324.17'
L 17	S 31°00'19"W	76.49'	L 34	N 50°29'00"W	53.09'	L 51	N 44°05'33"E	158.30'



Survey For: Paul Oberhauser  
 State: Ohio  
 County: Athens  
 Township: Bern  
 T- 7 R- 12 Lot: N/A  
 Section: 7  
 City or Village: N/A  
 Subdivision: N/A



## Legend

- Iron Pin Set
- 5/8" Rebar W/Cap
- Iron Pin Found
- ⊙ Post
- ▲ R.R. Spike Set
- △ R.R. Spike Found
- ⊙ Drilled Hole 5/8"
- Stone Found
- PK Nail Set
- ⊙ PK Nail Found
- \*— Fence

54

K C

5/17/96