

**NEAL HUGHES
LAND SURVEYING, LLC**
Rt. 1 Box 179A
Ellenboro, WV 26346

parcel A:

File No. 06-29

Description of Lot 2

January 8, 2006

A parcel of land situate in the State of Ohio, being in the County of Athens, Township of Bern, in the southeast quarter of Section 8, Range 12 West Township 7 North, of "The Ohio Company First Purchase of 1787" and being more particularly bounded and described as follows:

Beginning at a marked stone found at the southwest corner of Section 2 and the southeast corner of Section 8 (Reference bearing on the west line of Section 2, Wesley Township, Washington County and the east line of Section 8, Bern Township, Athens County, used as N00°16'50"W); thence with the south line of Section 8

S89°46'48"W, a distance of 654.35 feet to a 5/8" steel rod, found; thence

N00°19'29"W, a distance of 1869.32 feet to a point in the center of Athens County Route 38 (Mayles Ridge Road); thence

N71°26'50"E, a distance of 303.65 feet to a point in the center of Athens County Route 38, THE TRUE POINT OF BEGINNING; thence

N06°44'34"W, a distance of 151.19 feet, passing a 5/8" steel rod inscribed "Neal G. Hughes RLS 6714" here after referred to as a rebar at 20.41 feet, to a rebar; thence

N01°06'33"E, a distance of 395.11 feet to a rebar; thence

N30°43'53"E, a distance of 206.41 feet to a rebar in a line of a 100 acre tract conveyed to D. Morris in Deed Volume 261 at page 26; thence one line with said 100 acre tract

N89°55'22"E, a distance of 268.55 feet to a 5/8" steel rod with a plastic cap inscribed "Survey marker Claus 6456", found; thence with the west line of Section 2, Wesley Township, Washington County and the east line of Section 8, Bern Township, Athens County and the west line of a tract conveyed to G. Reynolds in Deed Volume 526 at page 86

S00°16'50"E, a distance of 770.85 feet, passing a 5/8" steel rod with a plastic cap inscribed "Survey marker Claus 6456", found at 714.86 feet, to a point in the center of Athens County Route 38; thence six lines with the road

N40°12'07"W, a distance of 37.07 feet; thence

N59°52'54"W, a distance of 45.37 feet; thence

N75°31'41"W, a distance of 55.71 feet; thence

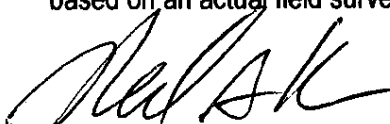
N86°21'46"W, a distance of 85.96 feet; thence

S85°47'55"W, a distance of 77.19 feet; thence

S79°05'57"W, a distance of 89.44 feet to THE TRUE POINT OF BEGINNING. The above described parcel contains 5.9729 acres more or less.

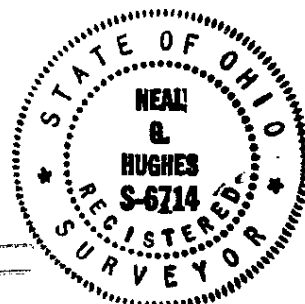
Prior references to Ivan Weaver; Athens County Official Record Volume 394 page 1530, Washington County Official Record Volume 431 page 291.

The above described parcel was prepared by Neal G. Hughes, Registered Land surveyor No. 6714, and based on an actual field survey performed on August 17, 2006.


Neal G. Hughes

Description Checked for
Mathematical Accuracy
Athens County
ENGINEER'S OFFICE

BY: S. Blause
DATE: 8-30-07



**NEAL HUGHES
LAND SURVEYING, LLC**
Rt. 1 Box 179A
Ellenboro, WV 26346

Parcel B:
File No. 06-29

Description of Lot 3

January 8, 2006

A parcel of land situate in the State of Ohio, being in the County of Athens, Township of Bern, in the southeast quarter of Section 8, Range 12 West Township 7 North, of "The Ohio Company First Purchase of 1787" and being more particularly bounded and described as follows:

Beginning at a marked stone found at the southwest corner of Section 2 and the southeast corner of Section 8 (Reference bearing on the west line of Section 2, Wesley Township, Washington County and the east line of Section 8, Bern Township, Athens County, used as N00°16'50"W); thence with the south line of Section 8

S89°46'48"W, a distance of 654.35 feet to a 5/8' steel rod, found; thence

N00°19'29"W, a distance of 1869.32 feet to a point in the center of Athens County Route 38 (Mayles Ridge Road), the TRUE POINT OF BEGINNING; thence two lines with the center of Athens County Route 38

N73°20'29"E, a distance of 83.31 feet; thence

N69°48'44"E, a distance of 156.16 feet; thence leaving the road

S26°55'18"E, a distance of 295.09 feet, passing a 5/8" steel rod inscribed "Neal G. Hughes RLS 6714" herein after referred to as a rebar at 19.95 feet, to a rebar; thence

S12°45'03"W, a distance of 369.79 feet to a rebar; thence

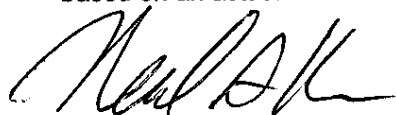
S05°11'04"W, a distance of 255.38 feet to a rebar; thence

N83°36'55"W, a distance of 252.48 feet to a rebar in a line of a 32.57 acre tract conveyed to R. Skinner in Official Records Volume 310 at page 216; thence with said Skinner tract

N00°19'29"W, a distance of 772.28 feet to THE TRUE POINT OF BEGINNING. The above described parcel contains 5.6378 acres more or less.

Prior references to Ivan Weaver; Athens County Official Record Volume 394 page 1530, Washington County Official Record Volume 431 page 291.

The above described parcel was prepared by Neal G. Hughes, Registered Land surveyor No. 6714, and based on an actual field survey performed on August 17, 2006.


Neal G. Hughes



Description Checked for
Mathematical Accuracy
Athens County
ENGINEER'S OFFICE
BY: S. Blayser
DATE: 8-30-07

NEAL HUGHES
LAND SURVEYING, LLC
Rt. 1 Box 179A
Ellenboro, WV 26346

Parcel C:

File No. 06-29 Description of Lot 4 January 8, 2006

A parcel of land situate in the State of Ohio, being part in the County of Washington, Township of Wesley, in the southwest quarter of Section 2, Range 12 West, Township 7 North, and being part in the County of Athens, Township of Bern, in the southeast quarter of Section 8, Range 12 West Township 7 North, of "The Ohio Company First Purchase of 1787" and being more particularly bounded and described as follows:

Beginning at a marked stone found at the southwest corner of Section 2 and the southeast corner of Section 8 (Reference bearing on the west line of Section 2, Wesley Township, Washington County and the east line of Section 8, Bern Township, Athens County, used as N00°16'50"W); thence with the south line of Section 8

S89°46'48"W, a distance of 654.35 feet to a 5/8' steel rod, found; thence

N00°19'29"W, a distance of 1869.32 feet to a point in the center of Athens County Route 38 (Mayles Ridge Road); thence

N71°02'23"E, a distance of 239.36 feet to a point in the center of Athens County Route 38, THE TRUE POINT OF BEGINNING; thence seven lines with Athens County Route 38

N72°57'43"E, a distance of 64.31 feet; thence

N79°05'57"E, a distance of 89.44 feet; thence

N85°47'55"E, a distance of 77.19 feet; thence

S86°21'46"E, a distance of 85.96 feet; thence

S75°31'41"E, a distance of 55.71 feet; thence

S59°52'54"E, a distance of 45.37 feet; thence

S40°12'07"E, a distance of 37.07 feet; thence one line with the west line of Section 2, Wesley Township, Washington County and the east line of Section 8, Bern Township, Athens County

S00°16'50"E, a distance of 19.91 feet to a 5/8' steel rod with a plastic cap inscribed "Survey marker Claus 6456"; thence one line with the southern line of a tract conveyed to G. Reynolds in Deed Volume 526 at page 86

S71°59'58"E, a distance of 13.17 feet to a point in the center of Washington County Route 96; thence two line with Washington County Route 96

S20°34'46"E, a distance of 88.96 feet; thence

S26°01'23"E, a distance of 32.11 feet; thence leaving the road

S25°24'31"W, a distance of 433.25 feet, passing a 5/8" steel rod inscribed "Neal G. Hughes RLS 6714" here after referred to as a rebar at 23.65 feet, to a rebar; thence

S40°15'34"W, a distance of 421.44 feet to a rebar; thence

N05°11'04"E, a distance of 255.38 feet to a rebar; thence

N12°45'03"E, a distance of 369.79 feet to a rebar; thence

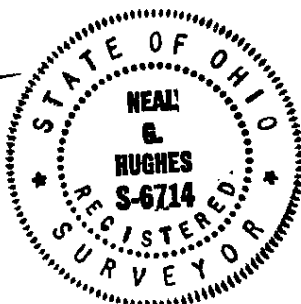
N26°55'18"W, a distance of 295.09 feet, passing a rebar at 275.14 feet, to THE TRUE POINT OF BEGINNING. The above described parcel contains 5.3182 acres more or less.

5.1523 acres are in the southeast quarter of Section 8, Bern Township, Athens County, and 0.1659 acres are in the southwest quarter of Section 2, Wesley Township, Washington County.

Prior references to Ivan Weaver; Athens County Official Record Volume 394 page 1530, Washington County Official Record Volume 431 page 291.

The above described parcel was prepared by Neal G. Hughes, Registered Land surveyor No. 6714, and based on an actual field survey performed on August 17, 2006.


Neal G. Hughes



Description Checked for
Mathematical Accuracy
Athens County
ENGINEER'S OFFICE

BY: S. Blaus
DATE: 8-30-07

IVAN WEAVER LANDS

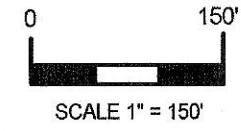
WESLEY TOWNSHIP, WASHINGTON COUNTY, OHIO
SECTION 2, RANGE 12 WEST, TOWNSHIP 7 NORTH
and
BERN TOWNSHIP, ATHENS COUNTY, OHIO
SECTION 8, RANGE 12 WEST, TOWNSHIP 7 NORTH

D. MORRIS
VOL. 261 PG. 26
VOL. 261 PG. 28

G. REYNOLDS
VOL. 526 PG. 86
82 ACRES

PRIOR REFERENCE TO IVAN WEAVER
ATHENS CO. OR VOLUME 394 PAGE 1530
WASHINGTON CO. OR VOLUME 431 PAGE 291

PRIOR REFERENCE
ATHENS CO. OR VOLUME 391 PAGE 1698
WASHINGTON CO. OR VOLUME 427 PAGE 59



BEARINGS ARE REFERENCED TO A SURVEY
BY ROGER CLAUS OF THE PARENT TRACT
DATED NOVEMBER 1, 2005

- = 5/8" STEEL ROD WITH INSCRIPTION
"NEAL G. HUGHES RLS 6714", SET
- = 5/8" STEEL ROD WITH INSCRIPTION
"SURVEY MARKER CLAUS 8458", FOUND



SURVEYED ON AUGUST 17, 2006 BY:
NEAL HUGHES, R.L.S. #6714
ELLENBORO, WV 26346

FILE NO. 06-29

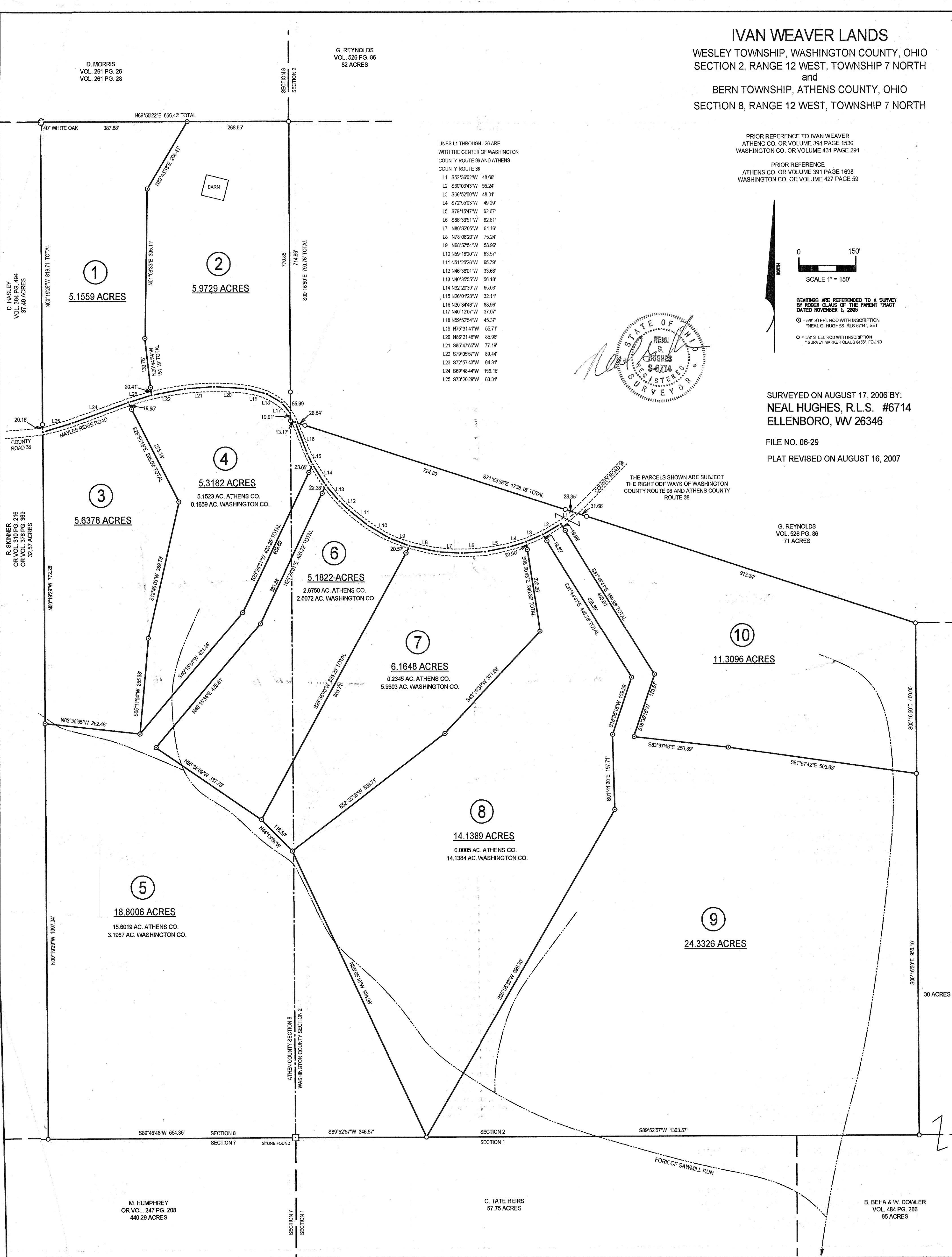
PLAT REVISED ON AUGUST 16, 2007

G. REYNOLDS
VOL. 526 PG. 86
71 ACRES

THE PARCELS SHOWN ARE SUBJECT
TO THE RIGHT OF WAY OF WASHINGTON
COUNTY ROUTE 96 AND ATHENS COUNTY
ROUTE 38

LINES L1 THROUGH L26 ARE
WITH THE CENTER OF WASHINGTON
COUNTY ROUTE 96 AND ATHENS
COUNTY ROUTE 38

- L1 S52°36'02"W 48.66'
- L2 S60°03'43"W 55.24'
- L3 S66°52'00"W 48.01'
- L4 S72°55'03"W 49.29'
- L5 S79°15'47"W 62.67'
- L6 S86°33'51"W 62.61'
- L7 N86°32'05"W 64.16'
- L8 N78°06'20"W 75.24'
- L9 N88°57'51"W 58.96'
- L10 N59°16'20"W 63.57'
- L11 N51°25'28"W 65.79'
- L12 N46°38'01"W 33.66'
- L13 N40°35'55"W 56.18'
- L14 N32°20'30"W 65.03'
- L15 N26°01'23"W 32.11'
- L16 N20°34'46"W 88.96'
- L17 N40°12'07"W 37.07'
- L18 N59°52'54"W 45.37'
- L19 N75°31'41"W 55.71'
- L20 N86°21'46"W 85.99'
- L21 S85°47'55"W 77.19'
- L22 S79°05'57"W 89.44'
- L23 S72°57'43"W 64.31'
- L24 S69°48'44"W 156.16'
- L25 S73°20'29"W 83.31'



①
5.1559 ACRES

②
5.9729 ACRES

③
5.6378 ACRES

④
5.3182 ACRES
5.1523 AC. ATHENS CO.
0.1659 AC. WASHINGTON CO.

⑥
5.1822 ACRES
2.6750 AC. ATHENS CO.
2.5072 AC. WASHINGTON CO.

⑦
6.1648 ACRES
0.2345 AC. ATHENS CO.
5.9303 AC. WASHINGTON CO.

⑧
14.1389 ACRES
0.0005 AC. ATHENS CO.
14.1384 AC. WASHINGTON CO.

⑤
18.8006 ACRES
15.8019 AC. ATHENS CO.
3.1987 AC. WASHINGTON CO.

⑨
24.3326 ACRES

⑩
11.3096 ACRES

M. HUMPHREY
OR VOL. 247 PG. 208
440.29 ACRES

C. TATE HEIRS
57.75 ACRES

B. BEHA & W. DOWLER
VOL. 484 PG. 266
65 ACRES

D. HASLEY
VOL. 384 PG. 464
37.49 ACRES

R. SKINNER
OR VOL. 310 PG. 216
OR VOL. 376 PG. 389
32.57 ACRES

30 ACRES