

CENTERLINE SURVEY PLAT

COUNTY ROAD 107
 ATHENS COUNTY
 TRIMBLE TOWNSHIP

PERRY COUNTY
 MONROE TOWNSHIP

COUNTY ROAD 63
 MORGAN COUNTY
 HOMER TOWNSHIP

84897

Received Nov. 20 1968
 Recorded Nov. 20 1968
 Book 9 Page 24
John W. Dowler
 Athens County Recorder

Received Dec. 2 1968
 Recorded Dec. 2 1968
 Book 9 Page 27
 Morgan County Recorder

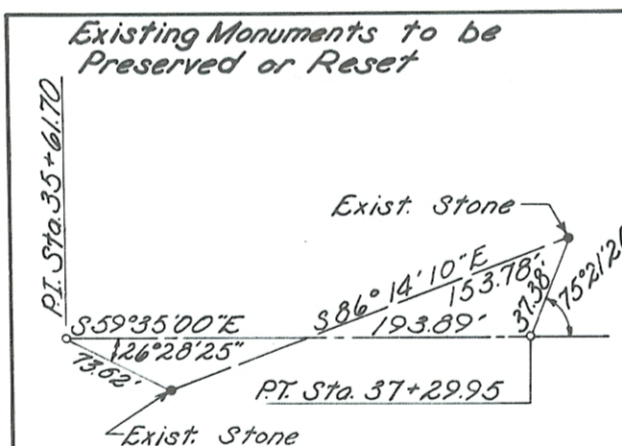
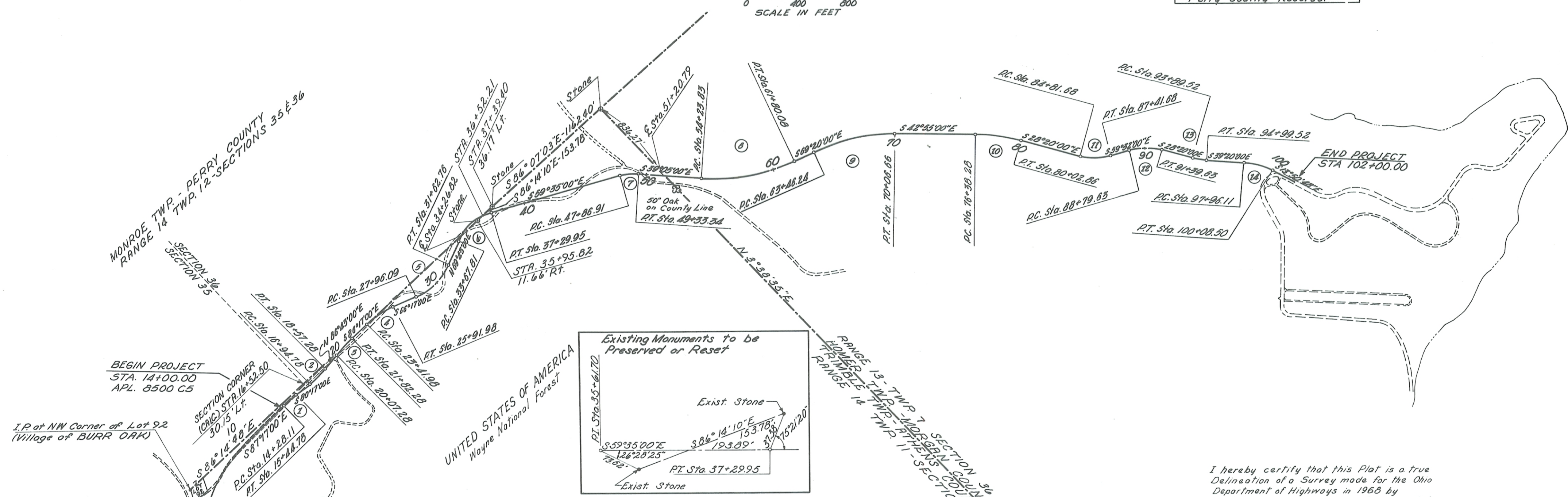
Received Dec. 19 1968
 Recorded Dec. 19 1968
 Book 4 Page 167
James D. Hays
 Perry County Recorder

FED. RD. DIVISION	STATE	PROJECT
2	OHIO	APL-8500(5)

ATHENS COUNTY
 ATH. C.R. 107
 BURR OAK ACCESS RD.

71
77

1
7



MONUMENT ASSEMBLIES TO BE PLACED ON CENTERLINE AT THE FOLLOWING LOCATIONS DURING CONSTRUCTION

PC Sta. 14+28.11	PC Sta. 27+96.09	PT Sta. 61+80.08	PT Sta. 91+39.63
PT Sta. 15+44.78	PT Sta. 31+62.76	PC Sta. 63+46.24	PC Sta. 93+89.52
PC Sta. 16+94.78	PC Sta. 33+67.81	PT Sta. 70+06.66	PT Sta. 94+99.52
PT Sta. 18+57.28	PT Sta. 37+29.95	PC Sta. 76+38.28	PC Sta. 97+96.11
PC Sta. 20+07.28	POT Sta. 44+00.00	PT Sta. 90+02.86	PT Sta. 100+08.50
PT Sta. 21+82.28	PC Sta. 47+86.91	PC Sta. 94+81.68	
PC Sta. 23+41.98	PT Sta. 49+33.34	PT Sta. 97+41.68	
PT Sta. 25+91.98	PC Sta. 54+23.83	PC Sta. 98+79.63	

I hereby certify that this Plat is a true Delineation of a Survey made for the Ohio Department of Highways in 1968 by Civil Engineering Associates Columbus, Ohio

John Z. Koenig Date OCT. 3, 1968
 Registered Surveyor No. 5219

Signed _____ John W. Dowler
 Date _____ Division Deputy Director

COORDINATES

CURVE 1	CURVE 4	CURVE 7
PC - N 2,123,064.14 E 566,349.85 PI - N 2,123,061.37 E 566,408.19 PT - N 2,123,051.51 E 566,465.75	PC - N 2,123,014.67 E 567,259.51 PI - N 2,123,006.49 E 567,385.52 PT - N 2,122,955.69 E 567,501.14	PC - N 2,122,367.89 E 569,498.47 PI - N 2,122,330.43 E 569,562.29 PT - N 2,122,272.98 E 569,608.95
CURVE 2	CURVE 5	CURVE 8
PC - N 2,123,026.20 E 566,613.60 PI - N 2,123,012.42 E 566,694.09 PT - N 2,123,017.10 E 566,775.50	PC - N 2,122,878.60 E 567,688.02 PI - N 2,122,796.01 E 567,864.63 PT - N 2,122,862.88 E 568,045.58	PC - N 2,121,892.25 E 569,918.18 PI - N 2,121,591.72 E 570,162.27 PT - N 2,121,455.08 E 570,524.51
CURVE 3	CURVE 6	CURVE 9
PC - N 2,123,025.69 E 566,925.25 PI - N 2,123,030.71 E 567,012.72 PT - N 2,123,025.03 E 567,100.14	PC - N 2,122,933.97 E 568,237.91 PI - N 2,123,001.18 E 568,419.78 PT - N 2,122,903.02 E 568,586.99	PC - N 2,121,396.44 E 570,679.98 PI - N 2,121,277.79 E 570,994.53 PT - N 2,121,031.58 E 571,223.45

1. CURVE DATA	2. CURVE DATA	3. CURVE DATA	4. CURVE DATA	5. CURVE DATA	6. CURVE DATA	7. CURVE DATA
PI: Sta. 14+86.52 Δ = 7°00'00" Dc = 6°00'00" R = 954.93' L = 116.67' T = 58.41' E = 1.78'	PI: Sta. 17+76.38 Δ = 13°00'00" Dc = 8°00'00" R = 716.20' L = 182.50' T = 81.60' E = 4.63'	PI: Sta. 20+94.89 Δ = 7°00'00" Dc = 4°00'00" R = 1432.39' L = 175.00' T = 87.61' E = 2.60'	PI: Sta. 24+08.26 Δ = 20°00'00" Dc = 6°00'00" R = 716.20' L = 250.00' T = 126.28' E = 11.05'	PI: Sta. 29+89.00 Δ = 44°00'00" Dc = 12°00'00" R = 477.47' L = 368.67' T = 192.91' E = 37.50'	PI: Sta. 35+81.70 Δ = 50°42'00" Dc = 14°00'00" R = 409.26' L = 362.14' T = 193.89' E = 43.61'	PI: Sta. 48+80.92 Δ = 20°30'00" Dc = 14°00'00" R = 409.26' L = 148.43' T = 74.01' E = 6.04'
8. CURVE DATA	9. CURVE DATA	10. CURVE DATA	11. CURVE DATA	12. CURVE DATA	13. CURVE DATA	14. CURVE DATA
PI: Sta. 58+10.99 Δ = 30°15'00" Dc = 4°00'00" R = 1432.39' L = 756.25' T = 387.16' E = 51.40'	PI: Sta. 68+82.43 Δ = 26°25'00" Dc = 4°00'00" R = 1432.39' L = 680.42' T = 336.19' E = 38.92'	PI: Sta. 78+21.56 Δ = 14°35'00" Dc = 4°00'00" R = 1432.39' L = 304.58' T = 183.28' E = 11.68'	PI: Sta. 88+14.99 Δ = 31°12'00" Dc = 12°00'00" R = 477.47' L = 260.00' T = 133.31' E = 18.26'	PI: Sta. 90+12.94 Δ = 31°12'00" Dc = 12°00'00" R = 477.47' L = 260.00' T = 133.31' E = 18.26'	PI: Sta. 94+44.67 Δ = 11°00'00" Dc = 10°00'00" R = 572.96' L = 110.00' T = 55.17' E = 2.65'	PI: Sta. 99+04.09 Δ = 25°29'12" Dc = 12°00'00" R = 477.47' L = 212.39' T = 107.98' E = 12.00'

COORDINATES

CURVE 10	CURVE 13
PC - N 2,120,569.02 E 571,653.54 PI - N 2,120,434.80 E 571,778.35 PT - N 2,120,273.47 E 571,865.33	PC - N 2,119,192.24 E 572,686.43 PI - N 2,119,143.68 E 572,712.61 PT - N 2,119,101.01 E 572,747.58
CURVE 11	CURVE 14
PC - N 2,119,852.01 E 572,092.58 PI - N 2,119,734.67 E 572,155.85 PT - N 2,119,667.08 E 572,270.75	PC - N 2,118,871.61 E 572,935.57 PI - N 2,118,788.09 E 573,004.01 PT - N 2,118,683.24 E 573,029.95
CURVE 12	NOTE
PC - N 2,119,597.13 E 572,389.66 PI - N 2,119,529.54 E 572,504.56 PT - N 2,119,412.20 E 572,567.83	Coordinates based on Ohio Coordinate System, South Zone (U.S.G.S)