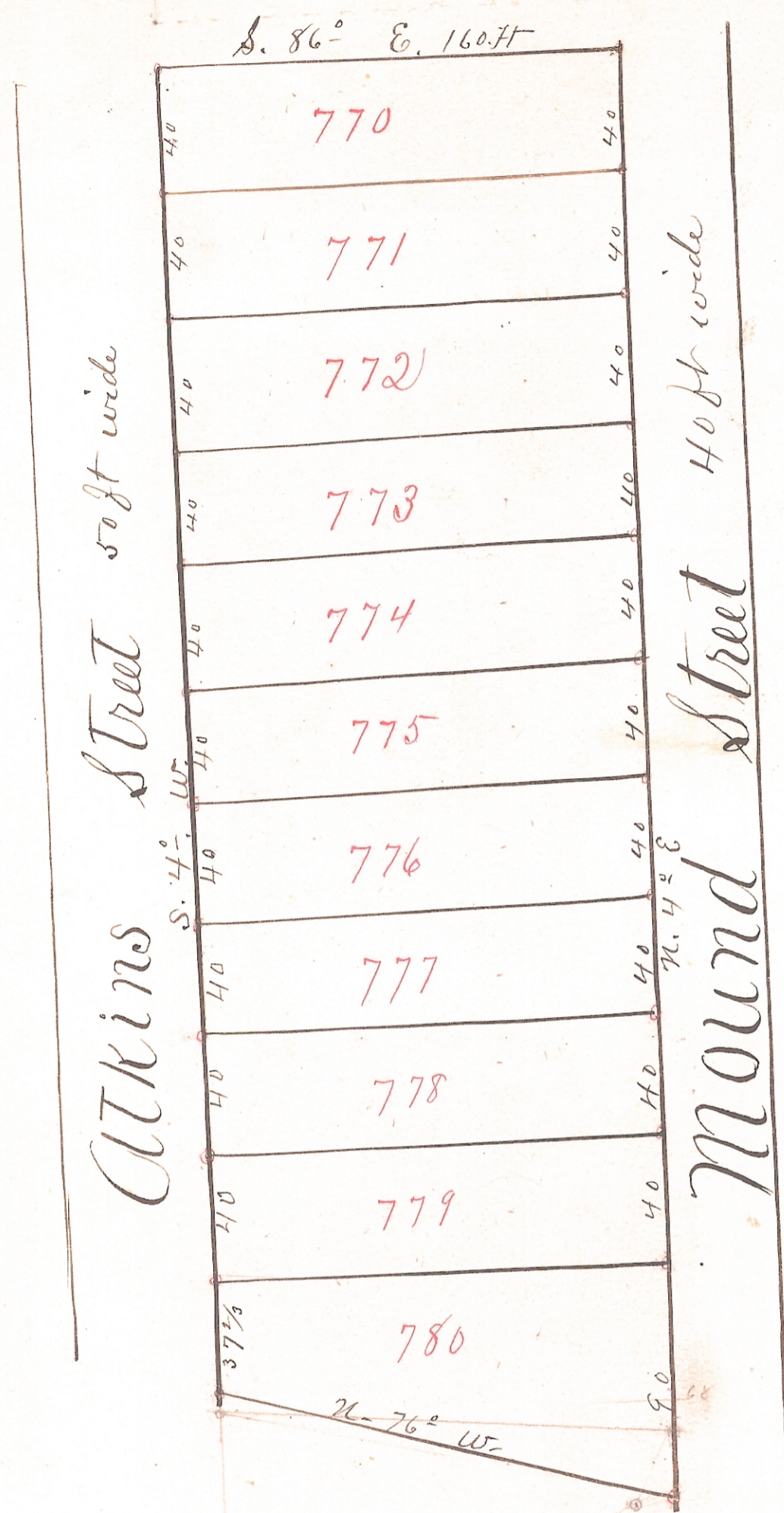


C. F. Robey's Addition to Gloucester



Plat and notes of C. F. Robey's Addition to Gloucester
 Beginning S. 4 1/2° W. 28^{rods} from the Northwest corner of the Bucyrus
 Brick and Terra Cotta Company's land, thence S. 4 1/2° W. to the S.W.
 corner of C. F. Robey's land. The Street on the west is 22 1/4 feet wide off
 Robey's land and 27 1/4 feet wide off the Brick Plant, width and
 length of lots marked on plat. Also Magnetic bearing.
 I certify the above plat to be a correct plat

M. K. Atkinson, Surveyor.

The State of Ohio Athens County ss.

Before the undersigned authority personally came C. F. Robey who
 acknowledged the above plat to be his voluntary act and deed.

M. K. Atkinson J. P.

Entered for Record
 July 10th 1894 at 9 a.m.
 Recorded July 26th 1894
 Attest C. L. Beau. Recorder

Gloucester O. July 3rd 1894 Received and
 Approved on this date J. H. Jones
 Mayor
 Attest H. A. Baufleeter
 Clerk

