

BRANNER SURVEYING

MEMBER-PROFESSIONAL LAND SURVEYORS OF OHIO

12500 N. PEACH RIDGE ROAD
ATHENS, OHIO 45701

JOHN M. BRANNER
Registered Land Surveyor

TELEPHONE
(614) 592-5778

TRACT "11" DISCRIPTION OF A 6.077 ACRE TRACT

Situated in Section 1, T. 5, R. 13, Canaan Township, Athens County, Ohio and being more particularly described as follows:

Commencing at a point in County road 24 bearing North 32 degrees 00 minutes 46 seconds West, a distance of 2399.87 feet from the South-east Corner of Section 1, said point being the POINT OF BEGINNING;

thence, leaving said road, South 63 degrees 55 minutes 29 seconds West, a distance of 259.25 feet to an iron pin set, passing an iron pin set at 13.19 feet;

thence, South 27 degrees 52 minutes 47 seconds West, a distance of 537.69 feet to an iron pin set;

thence, North 83 degrees 11 minutes 21 seconds West, a distance of 175.00 feet to an iron pin set;

thence, North 9 degrees 42 minutes 45 seconds East, a distance of 839.05 feet to a point in the aforementioned County road 24, passing an iron pin set at 825.38 feet;

thence, following said road, South 86 degrees 17 minutes 58 seconds East, a distance of 18.70 feet to a point;

thence, South 83 degrees 21 minutes 14 seconds East, a distance of 70.40 feet to a point;

thence, South 72 degrees 39 minutes 13 seconds East, a distance of 79.06 feet to a point;

thence, South 63 degrees 16 minutes 43 seconds East, a distance of 96.68 feet to a point;

thence, South 59 degrees 16 minutes 55 seconds East, a distance of 58.83 feet to a point;

thence, South 59 degrees 16 minutes 55 seconds East, a distance of 90.00 feet to a point;

thence, South 56 degrees 52 minutes 04 seconds East, a distance of 82.55 feet to a point;

thence, South 48 degrees 57 minutes 58 seconds East, a distance of 87.95 feet to a point;

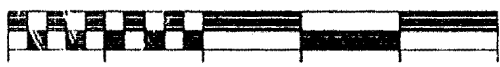
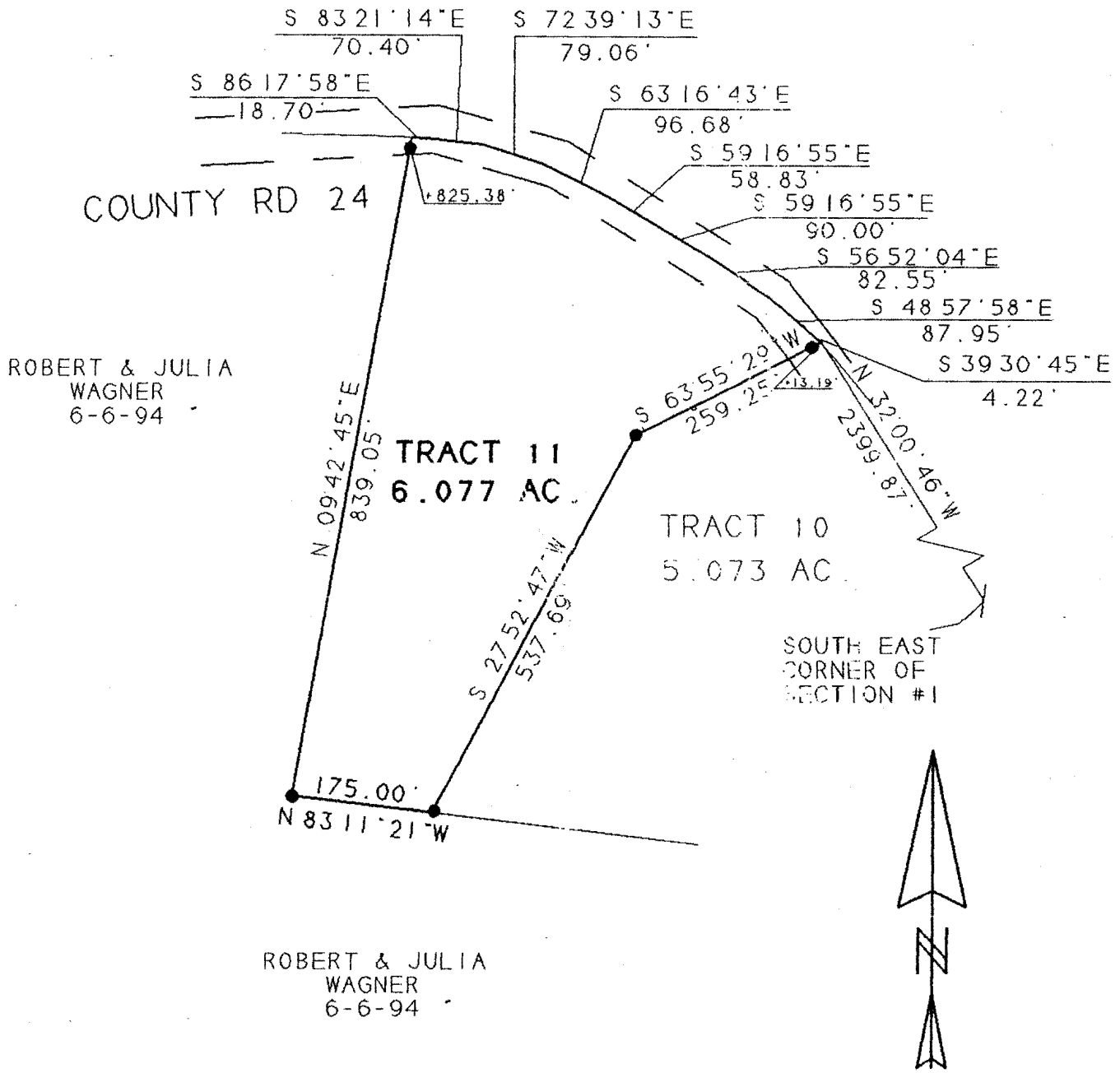
thence South 39 degrees 30 minutes 45 seconds East, a distance of 4.22 feet to the POINT OF BEGINNING and containing 6.077 acres.

Subject to all easements and rights of way of record.
All iron pin set are 5/8 inch x 30 inch long rebar.

The above description is based on a field survey completed december 1996 by John M. Branner P.S. 6805

73

Date: _____
for _____
by _____
S. Branner
1-6-97



SCALE 1 INCH = 200 FEET

- - IRON PIN FOUND
- - IRON PIN SET

BEARINGS SHOWN HEREON ARE BASED ON A SURVEY OF AN 114.57 ACRE TRACT AND ARE USED TO DONOTE ANGLES ONLY

SURVEY OF A 6.077 ACRE TRACT
 SEC. 1, T.5, R.13, CANAAN TWP.
 ATHENS COUNTY, OHIO
 SURVEYED DECEMBER 1996 &

JOHN M. BRANNER P.S. 6805
 12500 N. PEACH RIDGE ROAD
 ATHENS, OHIO 592-5778

S. Blauvelt
 1-6-97

14

CAN # 1