

BRANNER SURVEYING

MEMBER-PROFESSIONAL LAND SURVEYORS OF OHIO

12500 N. PEACH RIDGE ROAD
ATHENS, OHIO 45701

JOHN M. BRANNER
Registered Land Surveyor

TELEPHONE
(614) 592-5778

TRACT "12" DISCRIPTION OF A 7.65 ACRE TRACT

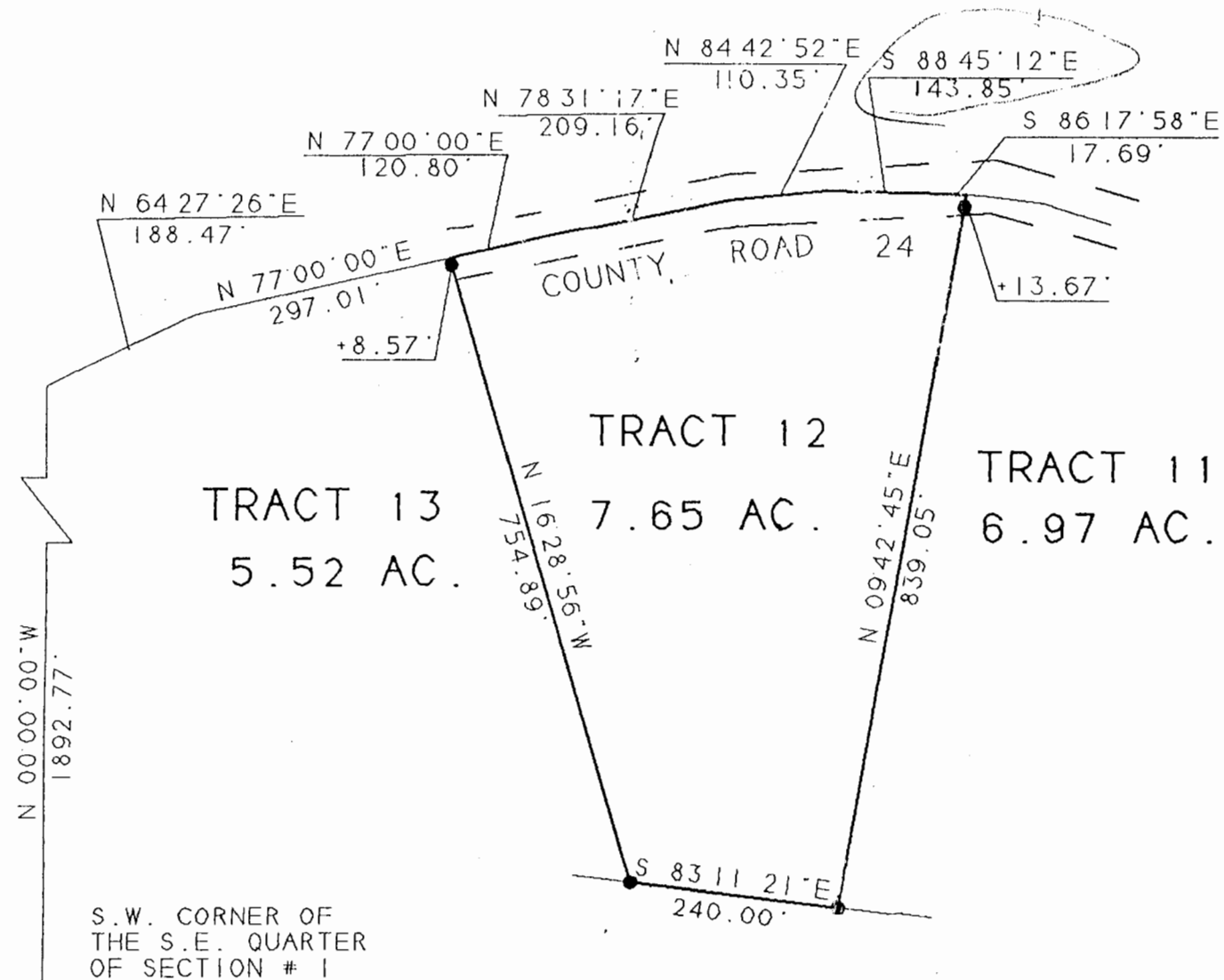
Situated in Section 1, T. 5, R. 13, Canaan Township, Athens County, Ohio and being more particularly described as follows:

Commencing at the South-west corner of the South-east Quarter of Section,
thence, North, a distance of 1892.77 feet to a point;
thence, North 64 degrees 27 minutes 26 seconds East, a distance of 188.48 feet to a point in County road 24;
thence, following said road, North 77 degrees 00 minutes 00 seconds East, a distance of 297.01 feet to a point, said point being the POINT OF BEGINNING;
thence, North 77 degrees 00 minutes 00 seconds East,, a distance of 120.80 feet to a point;
thence, North 78 degrees 31 minutes 17 seconds East, a distance of 209.16 feet to a point;
thence, North 84 degrees 42 minutes 53 seconds East, a distance of 110.35 feet to a point;
thence, South 88 degrees 45 minutes 12 seconds East, a distance of 143.85 feet to a point;
thence, South 86 degrees 17 minutes 58 seconds East, a distance of 17.69 feet to a point;
thence, leaving said road, South 9 degrees 42 minutes 45 seconds West, a distance of 839.05 feet to an iron pin set, passing an iron pin set at 13.67 feet;
thence, North 83 degrees 11 minutes 21 seconds West, a distance of 240.00 feet to an iron pin set;
thence, North 16 degrees 28 minutes 56 seconds West, a distance of 754.89 feet, passing an iron pin set at 746.32 feet, to the POINT OF BEGINNING and containing 7.65 acres.

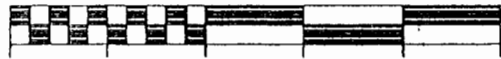
Subject to all easements and rights of way of record.
All iron pin set are 5/8 inch x 30 inch long rebar.

The above description is based on a field survey completed december 1996 by John M. Branner P.S. 6805

J. Blausen
1-13-97



S. Blause
1-13-97



SCALE 1 INCH = 200 FEET

● - IRON PIN SET

BEARINGS SHOWN HEREON ARE BASED ON A SURVEY OF AN 114.57 ACRE TRACT AND ARE USED TO DENOTE ANGLES ONLY

SURVEY OF A 7.65 ACRE TRACT
 SEC. 1, T.5, R.13, CANAAN TWP.
 ATHENS COUNTY, OHIO
 SURVEYED DECEMBER 1996 &

JOHN M. BRANNER P.S. 6805
 12500 N. PEACH RIDGE ROAD
 ATHENS, OHIO 592-5778

CAW #1